

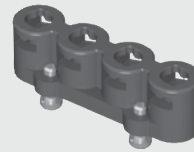


BULLSEYE®
TEST POINT SYSTEM

CCH-J-01



CCH-J-04



CCH-J-02

CCH SERIES

HIGH-PERFORMANCE TEST POINTS

SPECIFICATIONS

For complete specifications and recommended PCB layouts see www.samtec.com?CCH

Insulator Material:

Black LCP

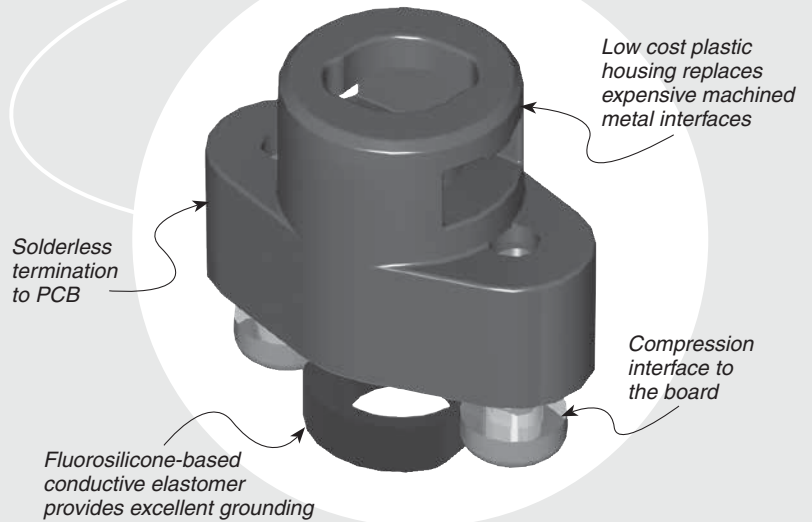
Gasket Material:

MIL-DTL-83528C, Type D

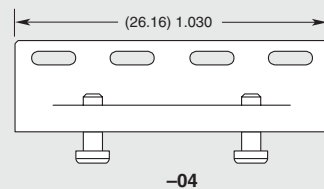
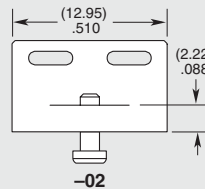
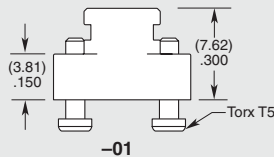
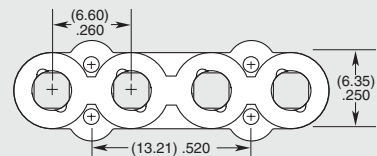
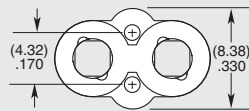
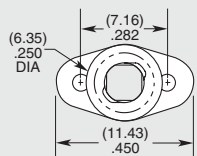
Mates with:
RF25S

OTHER SOLUTIONS

- Replacement elastomer gaskets available



TYPE	J	NUMBER OF POSITIONS
CCH		
= Single position test point		
		-01 = 1 Position
		-02 = 2 Positions
		-04 = 4 Positions



Patent:
7544093

Note:
Some lengths, styles and options are non-standard, non-returnable.

Due to technical progress, all designs, specifications and components are subject to change without notice.

WWW.SAMTEC.COM

All parts within this catalog are built to Samtec's specifications. Customer specific requirements must be approved by Samtec and identified in a Samtec customer-specific drawing to apply.