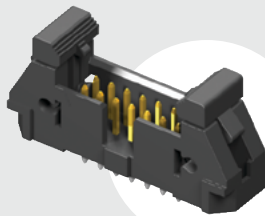
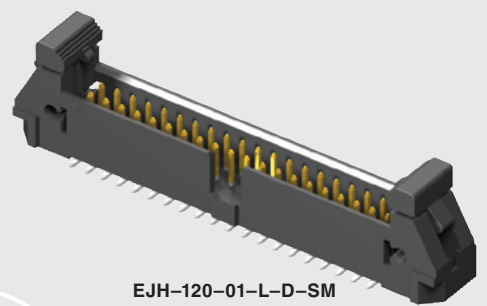


EJH-107-01-F-D-TH



EJH-120-01-L-D-SM



(2.54 mm) .100"

EJH SERIES

SHROUDED IDC EJECTOR HEADERS

SPECIFICATIONS

For complete specifications and recommended PCB layouts see www.samtec.com?EJH

Insulator Material:

- 01: Black LCP
- 02: Natural LCP

Terminal Material:

Phosphor Bronze

Plating:

Sn or Au over 50 μ" (1.27 μm) Ni

Operating Temp Range:

-55 °C to +125 °C

RoHS Compliant:

Yes

PROCESSING

Lead-Free Solderable:

Yes

SMT Lead Coplanarity:

(0.10 mm) .004" max

RECOGNITIONS

For complete scope of recognitions see www.samtec.com/quality

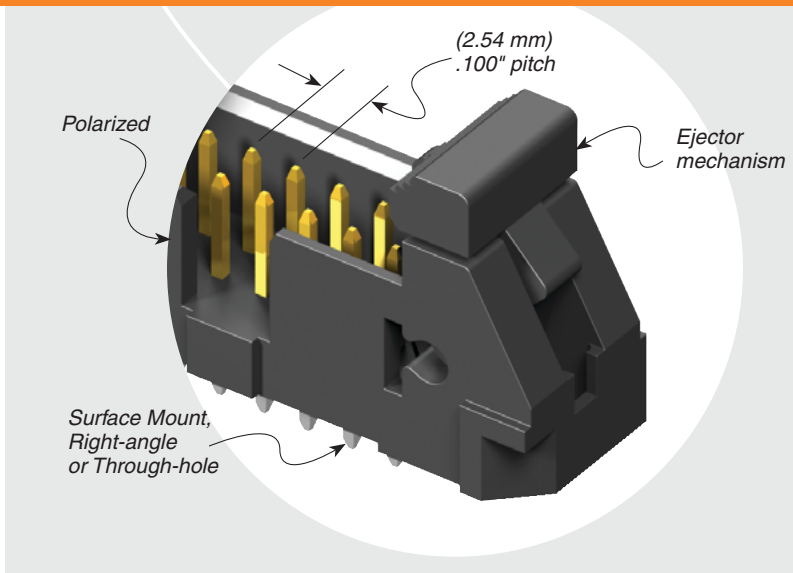


FILE NO. E111594

ALSO AVAILABLE (MOQ Required)

- Other sizes
- Other platings

Mates with:
IDSD (EJH-01 Required),
HCSD (EJH-02 Required)



EJH	1	NO. PINS PER ROW	LEAD STYLE	PLATING OPTION	D	TAIL OPTION	OTHER OPTION
		05, 07, 08, 10, 13, 15, 17, 20, 25 (Standard sizes)	-01 = Standard (Mates to IDSD) -02 = Extended (Mates to HCSD)	-F = Gold flash on post, Matte Tin on tail -L = 10 μ" (0.25 μm) Gold on post, Matte Tin on tail		-SM = Surface Mount -TH = Through-hole -RA = Right-angle	-“XX” = Polarized Position -LC = Locking Clip (-SM only) (Manual placement required) -K = .475" (12.00 mm) DIA Polyimide Film Pick & Place Pad (-SM only) -P = Pick & Place Pad (-SM only) -TR = Tape & Reel Packaging (-SM only) (25 position not available)

-01= No. of positions x (2.54) .100 + (17.63) .694
 -02= No. of positions x (2.54) .100 + (20.70) .815
 No. of positions x (2.54) .100 + (2.64) .104

(9.91) .390
 (0.51) .020
 (2.54) .100
 (2.59) .102 REF
 (2.54) .100
 (6.35) .250
 (2.3) .09
 (2.54) .100
 (0.64) .025 SQ
 (5.72) .225 (12.70) .500
 (3.05) .120
 (1.52) .060
 (12.83) .505
 (11.87) .467

-LC OPTION
 -SM OPTION (Latch removed for clarity)

Note: Some lengths, styles and options are non-standard, non-returnable.

Due to technical progress, all designs, specifications and components are subject to change without notice.

WWW.SAMTEC.COM

All parts within this catalog are built to Samtec's specifications.

Customer specific requirements must be approved by Samtec and identified in a Samtec customer-specific drawing to apply.