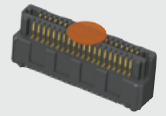
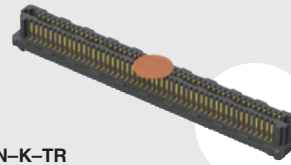


LSEM-150-03.0-F-DV-A-N-K-TR

LSEM-120-06.0-F-DV-A-N-K-TR



LSEM-120-01-L-DH-A-N-K-TR



LSEM SERIES

(0.80 mm) .0315"

HIGH-SPEED HERMAPHRODITIC STRIP

SPECIFICATIONS

For complete specifications and recommended PCB layouts see www.samtec.com?LSEM

- Insulator Material:** Black Liquid Crystal Polymer
- Contact Material:** Phosphor Bronze
- Plating:** Au or Sn over 50 μm (1.27 μm) Ni
- Current Rating:** 1.8 A per pin (2 adjacent pins powered)
- Operating Temp Range:** -55 °C to +125 °C
- RoHS Compliant:** Yes

PROCESSING

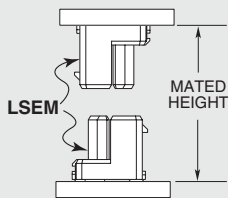
- Lead-Free Solderable:** Yes
- SMT Lead Coplanarity:** (0.10 mm) .004" max
- Board Stacking:** For applications requiring two or more connectors per board, contact ipg@samtec.com

RECOGNITIONS

For complete scope of recognitions see www.samtec.com/quality



APPLICATION



LEAD STYLE	MATED HEIGHT*
-03.0 & -03.0	(6.00) .236
-03.0 & -04.0	(7.00) .276
-04.0 & -04.0	(8.00) .315
-03.0 & -06.0	(9.00) .354
-04.0 & -06.0	(10.00) .394
-06.0 & -06.0	(12.00) .472

*Processing conditions will affect mated height.

Note: Some lengths, styles and options are non-standard, non-returnable.

Mates with:
LSEM

High-speed/High-density

Audible click when properly mated

Self-mating system can reduce inventory costs

Low cost Blade & Beam contact

Mated height variety/flexibility

Slim row-to-row design

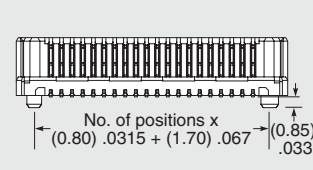
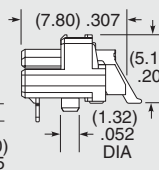
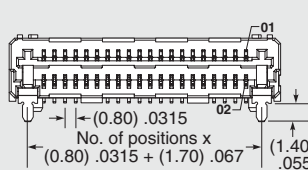
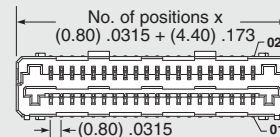
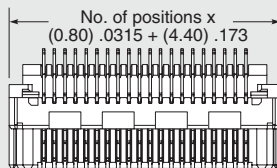
HIGH-SPEED CHANNEL PERFORMANCE

LSEM-DV/LSEM-DV @ 10 mm Mated Stack Height
Rating based on Samtec reference channel.
For full SI performance data visit Samtec.com or contact SIG@samtec.com

25
Gbps

LSEM	1	NO. PINS PER ROW	LEAD STYLE	PLATING OPTION	TAIL OPTION	A	N	K	TR
		20, 30, 40, 50	Specify LEAD STYLE from chart	-F = Gold flash on contact, Matte Tin on tail -L = 10 μm (0.25 μm) Gold on contact, Matte Tin on tail	-DV = Vertical -DH = Right-angle (Lead style -01 only)			-K = (5.50 mm) .217" DIA Polyimide film Pick & Place Pad	-TR = Tape & Reel

LEAD STYLE	A	B
-01 (-DH only)	NA	NA
-03.0	(4.45) .175	(1.50) .059
-04.0	(5.45) .215	(2.50) .098
-06.0	(7.45) .293	(4.50) .177



RUGGEDIZED BY SAMTEC

- High retention contacts
- Audible click when mated
- Shrouded

Due to technical progress, all designs, specifications and components are subject to change without notice.

WWW.SAMTEC.COM

All parts within this catalog are built to Samtec's specifications. Customer specific requirements must be approved by Samtec and identified in a Samtec customer-specific drawing to apply.