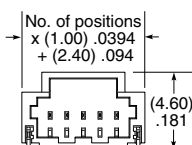
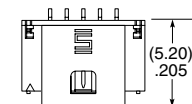
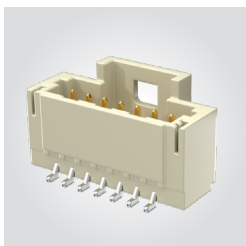


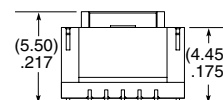
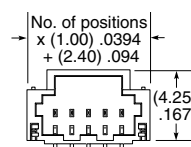
(1.00 mm) .0394" PITCH • WIRE TO BOARD TERMINAL

SERIES	NO. OF POSITIONS	PLATING OPTION	ROW OPTION	LATCH	OPTIONS	"X"R
T1M	-02, -03, -05, -07, -10, -15, -20	-F = 3 μ " (0.07 μ m) Gold on contact, Matte Tin on tail	-SH = Single Row Horizontal -SV = Single Row Vertical	(Required in callout) -L = Positive Latch	-K = (4.00 mm) .157" DIA Polyimide Film Pick & Place Pad (-SH only) -P = Pick & Place Pad (-SV only)	(Leave blank for Tape & Reel) -FR = Full Reel Tape & Reel (must order max. quantity per reel; contact Samtec for quantity breaks)

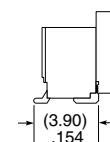
T1M-SH/SV
Cable Mates:
S1SS(T)



-SH



-SV



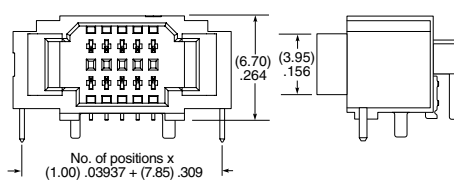
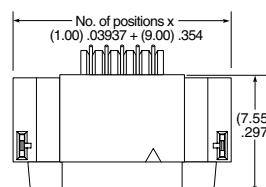
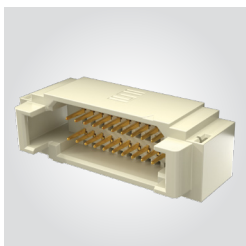
SPECIFICATIONS

Insulator Material:
Natural LCP
Terminal Material:
Phosphor Bronze
Plating: Sn or Au over
50 μ " (1.27 μ m) Ni
Operating Temp Range:
-55 °C to +125 °C
(Component only)
Current Rating (T1M/S1SS(T)):
2.2 A per pin
(3 adjacent pins powered)
Voltage Rating:
250 VAC/354 VDC

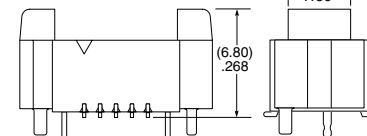
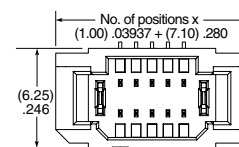
View complete specifications at: samtec.com?T1M

SERIES	NO. OF POSITIONS	PLATING OPTION	ROW OPTION	OPTION	"X"R
T1M	-02, -03, -04, -05, -10, -15, -20 (Per Row)	-GF = 3 μ " (0.07 μ m) Gold contact and tail	-DH = Double Row Horizontal -DV = Double Row Vertical	-K = (4.00 mm) .157" DIA Polyimide Film Pick & Place Pad (-DV only)	(Leave blank for Tape & Reel) -FR = Full Reel Tape & Reel (must order max. quantity per reel; contact Samtec for quantity breaks)

T1M-DH/DV
Cable Mates:
S1SD(T)



-DH



-DV

SPECIFICATIONS

Insulator Material:
Natural LCP
Terminal Material:
Phosphor Bronze
Plating: Sn or Au over
50 μ " (1.27 μ m) Ni
Operating Temp Range:
-55 °C to +125 °C
(Component only)
Current Rating (T1M/S1SD):
2.5 A per pin
(2 pins powered)
Voltage Rating: 250 VAC/354 VDC

View complete specifications at: samtec.com?T1M

Note:
Some lengths, styles and options
are non-standard, non-returnable.