

**NOTES:**

- STANDARD PART SET UP AS ASP FOR VITA74.**
- CXX.XX** REPRESENTS A CRITICAL DIMENSION.
- MINIMUM PUSH-OUT FORCE: .50 LBS[2.2N].
- INSPECT DIMENSION AT 4 CORNERS OF PART.
- FEATURE REQUIRED FOR VISION INSPECTION.
- ATTACH LABEL "SEAX-0001" TO EACH TAPE & REEL PACKAGE.
- PARTS TO BE PACKAGED IN TAPE & REEL.
- CHECK DIMENSION ON FIRST AND LAST ROW OF TAILS.
- A 20-30°C TEMPERATURE DIFFERENCE MAY EXIST BETWEEN THIS HIGH-DENSITY COMPONENT AND THE BOARD SURFACE DURING REFLOW. SAMTEC RECOMMENDS A THERMAL STUDY BE PERFORMED TO UNDERSTAND THE TEMPERATURE GRADIENTS YOU MAY EXPERIENCE.

**DO NOT UPDATE  
OR ADD REVISION WITHOUT  
APPROVAL THROUGH THE  
STANDARDS GROUP**

**CRITICAL DIMENSION INSPECTION INSTRUCTION TABLE**

ASSEMBLY OPERATION	IN-PROCESS INSPECTION
FILL WAFERS	C1, C2, C3, C4, C5, C7, C9, C17, C18, C19
FILL WELD TABS	C6, C8, C10, C13
FINISHED ASSEMBLY	C1, C2, C3, C4, C5, C7, C9, C17, C18, C19

CPCs INTENTIONALLY DELETED: C11, C12, C14, C16

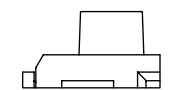
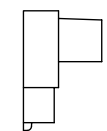
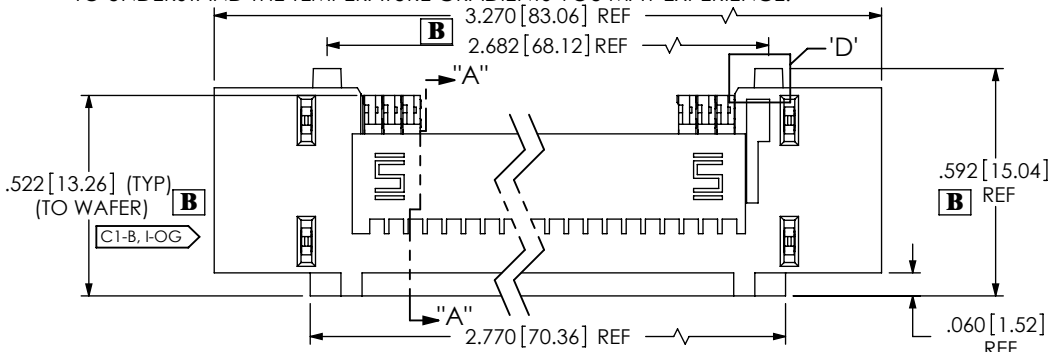
**REVISION**

A	MS	K Ashley
2/18/2011	ECN:148871	

RELEASE FOR PRODUCTION

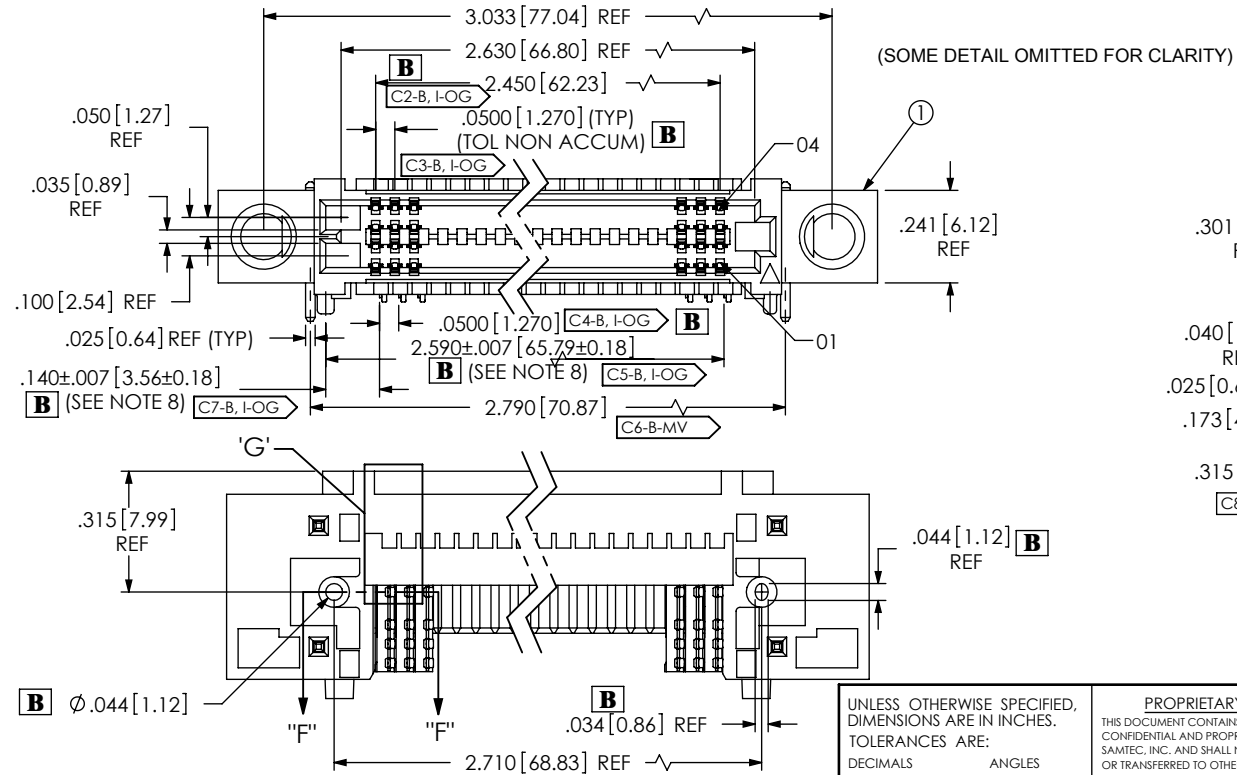
B	EC	T Lang
8/9/2012	ECN:183990	

TOP VIEW: ADD REF ON 3.270, "TYP (TO WAFER)" ON 522, CHG .542 TO .592, C1-B-CP TO C1-B, I-OG; FRONT VIEW: CHG .050 TO .0500, .140 REF TO .140 +.007, 2.460 TO 2.590, C2-B-MV TO C2-B, I-OG, C3-B-MV TO C3-B, I-OG, C4-B-MV TO C4-B, I-OG, C5-B-MV TO C5-B, I-OG, C7-B-MV TO C7-B, I-OG, REM C7 FROM 120 TO 140, DEL 1.120, ADD "SEE NOTES" ON 1.140 & 2.590; BTM VIEW: MOD A PIN POSITION, ADD DIA .044; SIDE VIEW: DEL DIA .044; NOTES: ADD NOTE 8 & 9; MAT'L: ADD C19; ADD REF BLOCK AND CPC TABLE; SHT 2, SECT "A"; CHG .036 +.005 TO .036 +.005+.008, C9-B-MV TO C9-B, I-OG, C10-B-CP TO C10-B-MV, DEL 315, C11, C12, C14; DET 'B': CHG .0020 TO .002, .004 TO .009, DEL C16, ADD "SEE NOTE 4" ON .002; ADD SECT "F"; "F" & DET 'G'



DETAIL 'C'  
SCALE 4.5 : 1  
(SEE NOTE 5)

DETAIL 'D'  
SCALE 4.5 : 1  
(SEE NOTE 5)



ACCEPTANCE OF DRAWING  
 ACCEPTED WITH DEVIATIONS LISTED

DATE: \_\_\_\_\_  
COMPANY: \_\_\_\_\_  
CUSTOMER SIGNATURE: \_\_\_\_\_  
PRINTED NAME: \_\_\_\_\_  
PHONE NO: \_\_\_\_\_  
FAX NO: \_\_\_\_\_

UNLESS OTHERWISE SPECIFIED, DIMENSIONS ARE IN INCHES. TOLERANCES ARE:  
DECIMALS ANGLES  
.XX: ±.01 [.3] 2°  
.XXX: ±.005 [.13]  
.XXXX: ±.0020 [.051]

**PROPRIETARY NOTE**  
THIS DOCUMENT CONTAINS INFORMATION CONFIDENTIAL AND PROPRIETARY TO SAMTEC, INC. AND SHALL NOT BE REPRODUCED OR TRANSFERRED TO OTHER DOCUMENTS OR DISCLOSED TO OTHERS OR USED FOR ANY PURPOSE OTHER THAN THAT WHICH IT WAS OBTAINED WITHOUT THE EXPRESSED WRITTEN CONSENT OF SAMTEC, INC.

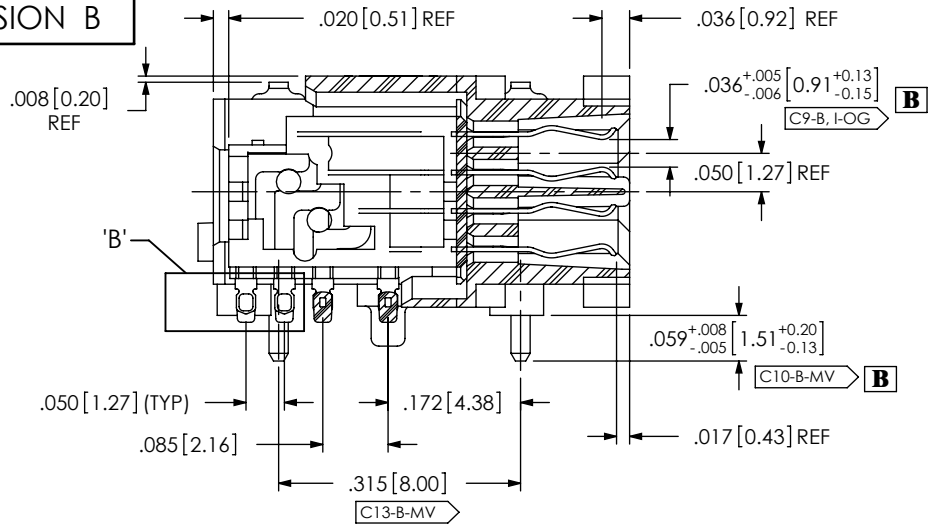


520 PARK EAST BLVD, NEW ALBANY, IN 47150  
PHONE: 812-944-6733 FAX: 812-948-5047  
e-Mail: info@SAMTEC.com code 53322

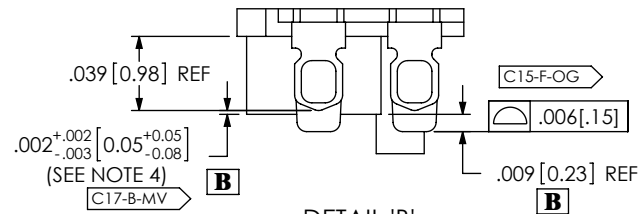
PLATING: DO NOT SCALE DRAWING SHEET SCALE: 2:1  
CONTACTS: CONTACT AREA: .00010 MIN GOLD OVER .000050 MIN NICKEL  
REMAINDER: .000200 REF TIN OVER .000050 MIN NICKEL  
WELD TABS:  
ENTIRE CONTACT: .000150 TIN OVER .000050 NICKEL  
SOLDER COMPOSITION:  
95.5% TIN / 3.5 SILVER / 0.7% COPPER C19-B, I-XR B  
LEAD FREE CHARGE TAIL  
F:\DWG\SW\ASP\161000\ASP-161074-01.SLDDRW

DESCRIPTION:	SEAF-RA
DWG. NO.	ASP-161074-01
BY: M SOLANO	2/18/2011
SHEET 1 OF 2	

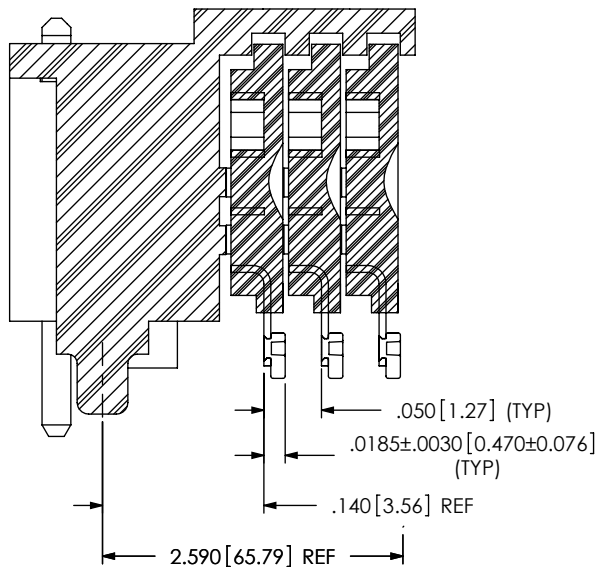
TEM NO	PART NUMBER	QTY	MATERIAL
1	S-SEAF-50-01-L-04-2-RA-GP-TR	1.0000	INSULATOR: LCP, COLOR BLACK; CONTACT: PHOS BRONZE
2	CT-SEAF072TP	.00444	CONDUCTIVE POLYMER
3	SEAX-0001	.01000	LABEL



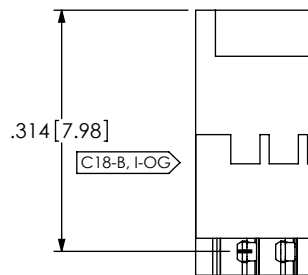
SECTION "A"-"A"  
SCALE 4 : 1



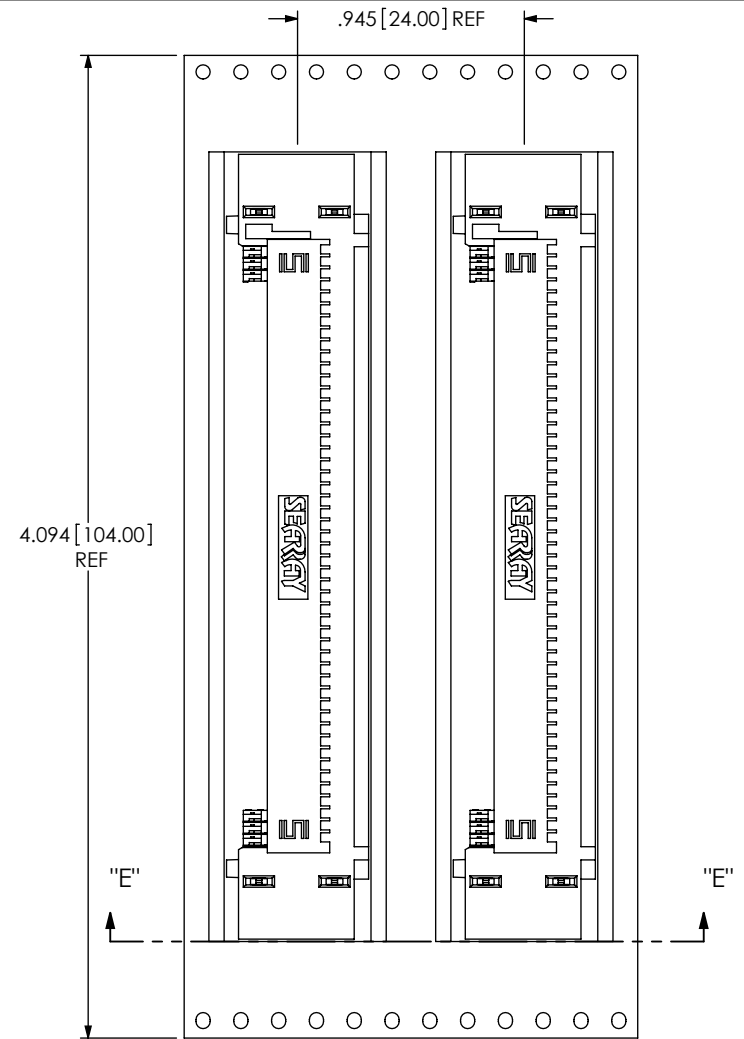
DETAIL 'B'  
SCALE 10 : 1



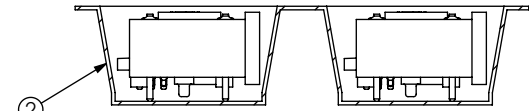
SECTION "F"-"F"  
SCALE 6 : 1



DETAIL 'G'  
SCALE 4 : 1



USER DIRECTION OF UN-REELING  
POCKET NOT DETAILED



SECTION "E"-"E"  
SCALE 1.25 : 1  
PACKAGING VIEW

PROPRIETARY NOTE

THIS DOCUMENT CONTAINS INFORMATION CONFIDENTIAL AND PROPRIETARY TO SAMTEC, INC. AND SHALL NOT BE REPRODUCED OR TRANSFERRED TO OTHER DOCUMENTS OR DISCLOSED TO OTHERS OR USED FOR ANY PURPOSE OTHER THAN THAT WHICH IT WAS OBTAINED WITHOUT THE EXPRESSED WRITTEN CONSENT OF SAMTEC, INC.



520 PARK EAST BLVD, NEW ALBANY, IN 47150  
PHONE: 812-944-6733 FAX: 812-948-5047  
e-Mail: info@SAMTEC.com code 55322

SHEET SCALE: 1:1

DESCRIPTION:

SEAF-RA

DWG. NO.

ASP-161074-01

BY: M SOLANO

2/18/2011

SHEET 2 OF 2