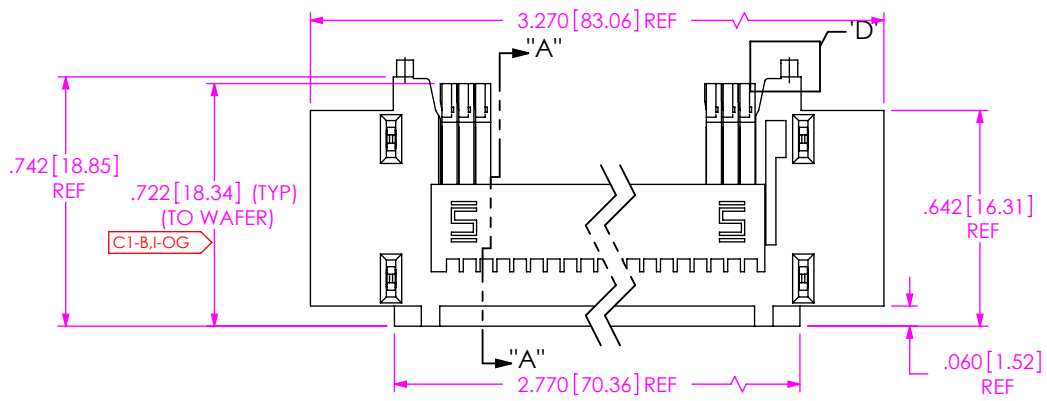


REVISION

A	TW	T WILD
5/29/2015	ECN-251890	
RELEASE FOR PRODUCTION		
B	JB	Z Barnett
6/4/2015	ECN-252223	
MOVE DETAILS 'C' & 'D' TO SHT 2; FRONT VIEW, ADD CPC4 .0500 (TYP); SHT 2, SECTION "A-A": ADD CPC8; DETAIL 'B': ADD CPC18; ADD DETAIL 'E'; UPDATE CPC TABLE.		

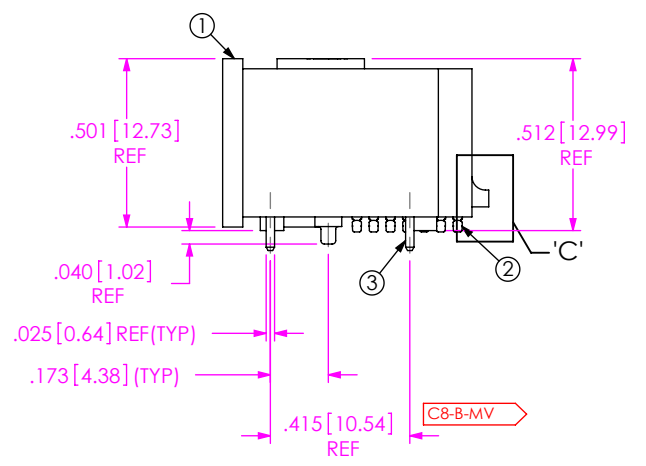
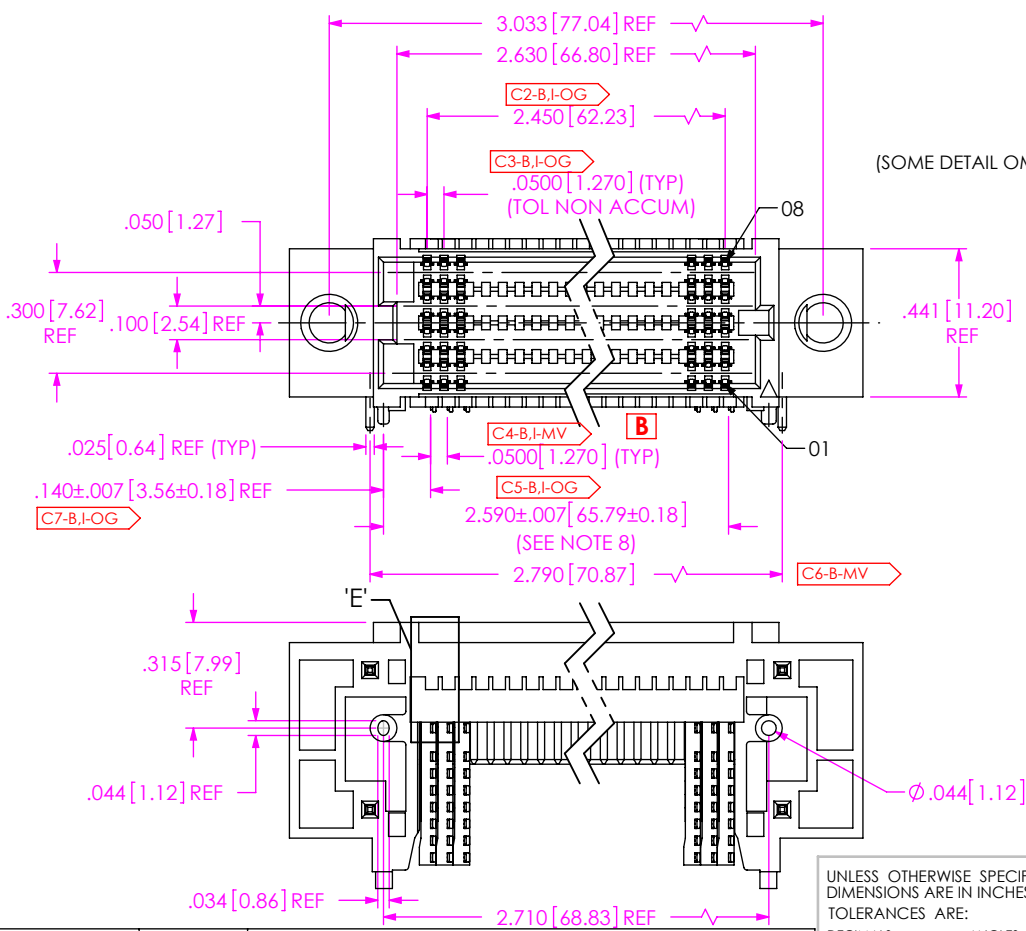
DO NOT UPDATE
OR ADD REVISION WITHOUT
APPROVAL THROUGH THE
STANDARDS GROUP



- NOTES:
1. STANDARD PART SETUP FOR VITA 74/NANO-ATR STANDARD.
 2. [Cx-xxx] REPRESENTS A CRITICAL DIMENSION.
 3. MINIMUM PUSH-OUT FORCE: .50 LBS[2.2N].
 4. INSPECT DIMENSION AT 4 CORNERS OF PART.
 5. FEATURE REQUIRED FOR VISION INSPECTION.
 6. ATTACH LABEL "SEAX-0001" TO EACH TAPE & REEL PACKAGE.
 7. PARTS TO BE PACKAGED IN TAPE & REEL.
 8. CHECK DIMENSION ON FIRST AND LAST ROW OF TAILS.
 9. A 20~30°C TEMPERATURE DIFFERENCE MAY EXIST BETWEEN THIS HIGH-DENSITY COMPONENT AND THE BOARD SURFACE DURING REFLOW. SAMTEC RECOMMENDS A THERMAL STUDY BE PERFORMED TO UNDERSTAND THE TEMPERATURE GRADIENTS YOU MAY EXPERIENCE.

BY SIGNING THIS DOCUMENT YOU ARE ACCEPTING THE CONDITIONS SET WITHIN. YOUR REQUIREMENTS MUST BE LISTED WITHIN THIS DRAWING. WHERE NO DIRECTION FROM THE CUSTOMER IS IDENTIFIED SAMTEC'S PROCESS REQUIREMENTS WILL BE USED.

DATE: _____
 COMPANY: _____
 CUSTOMER SIGNATURE: _____
 PRINTED NAME: _____
 PHONE NO.: _____
 EXCEPTIONS: _____



UNLESS OTHERWISE SPECIFIED, DIMENSIONS ARE IN INCHES. TOLERANCES ARE:
 DECIMALS ANGLES
 .XX: ±.01 [.3] 2°
 .XXX: ±.005 [.13]
 .XXXX: ±.0020 [.051]

PROPRIETARY NOTE
 THIS DOCUMENT CONTAINS INFORMATION CONFIDENTIAL AND PROPRIETARY TO SAMTEC, INC. AND SHALL NOT BE REPRODUCED OR TRANSFERRED TO OTHER DOCUMENTS OR DISCLOSED TO OTHERS OR USED FOR ANY PURPOSE OTHER THAN THAT WHICH IT WAS OBTAINED WITHOUT THE EXPRESSED WRITTEN CONSENT OF SAMTEC, INC.

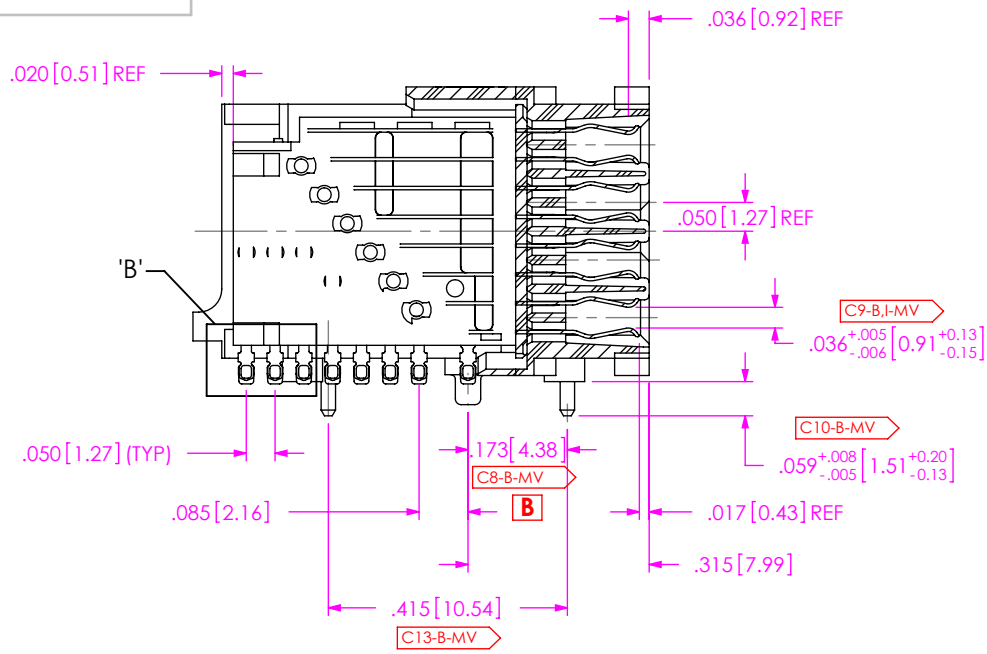


520 PARK EAST BLVD, NEW ALBANY, IN 47150
 PHONE: 812-944-6733 FAX: 812-948-5047
 e-Mail: info@SAMTEC.com code 53322

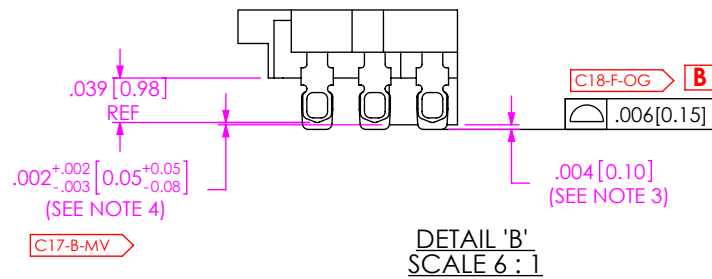
DO NOT SCALE DRAWING SHEET SCALE: 1:1
 PLATING: CONTACTS:
 CONTACT AREA: .000010 MIN GOLD OVER .000050 MIN NICKEL
 REMAINDER: .000200 REF TIN OVER .000050 MIN NICKEL
 WELD TABS:
 ENTIRE CONTACT: .000150 TIN OVER .000050 NICKEL

DESCRIPTION:	SEAF-RA
DWG. NO.	ASP-161074-02
BY: M SOLANO	2/21/2011 SHEET 1 OF 2

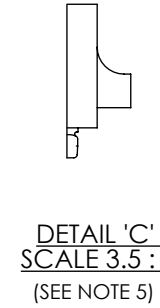
ITEM NO.	PART NUMBER	QUANTITY	MATERIAL
1	NR-SEAF-50-01-RA-08-GP	1.0000	VECTRA 473i, COLOR: BLACK
2	NR-SUB-IMC-242-01-08-L-2	50.0000	CONTACT: CuNi ALLOY; WAFER: LCP - COLOR: BLACK
3	WT-28-02-T	4.0000	BRASS ALLOY 260, FULL HARD
4	TR-ASP	.00444	CONDUCTIVE POLYMER
5	SEAX-0001	.01000	LABEL



SECTION "A"-"A"
SCALE 3 : 1



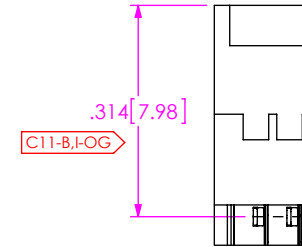
DETAIL 'B'
SCALE 6 : 1



DETAIL 'C'
SCALE 3.5 : 1
(SEE NOTE 5)



DETAIL 'D'
SCALE 3.5 : 1
(SEE NOTE 5)



DETAIL 'E'
SCALE 3.5 : 1

CRITICAL DIMENSION INSPECTION INSTRUCTION TABLE	
ASSEMBLY OPERATION	IN-PROCESS INSPECTION
FILL WAFERS	C1, C2, C3, C4, C5, C7, C9, C11, C17, C18
FILL WELD TABS	C6, C8, C10, C13
FINISHED ASSEMBLY	C1, C2, C3, C4, C5, C7, C9, C17, C18
CPCs INTENTIONALLY DELETED: C12, C14, C16	

PROPRIETARY NOTE
THIS DOCUMENT CONTAINS INFORMATION CONFIDENTIAL AND PROPRIETARY TO SAMTEC, INC. AND SHALL NOT BE REPRODUCED OR TRANSFERRED TO OTHER DOCUMENTS OR DISCLOSED TO OTHERS OR USED FOR ANY PURPOSE OTHER THAN THAT WHICH IT WAS OBTAINED WITHOUT THE EXPRESSED WRITTEN CONSENT OF SAMTEC, INC.

samtec
520 PARK EAST BLVD., NEW ALBANY, IN 47150
PHONE: 812-944-6733 FAX: 812-948-5047
e-Mail info@SAMTEC.com code 55322

SHEET SCALE: 2:1

DESCRIPTION: SEAF-RA

DWG. NO. ASP-161074-02

BY: M SOLANO 2/21/2011 SHEET 2 OF 2