

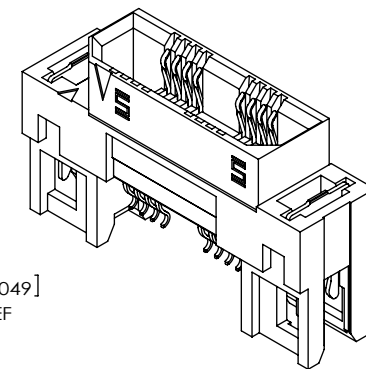
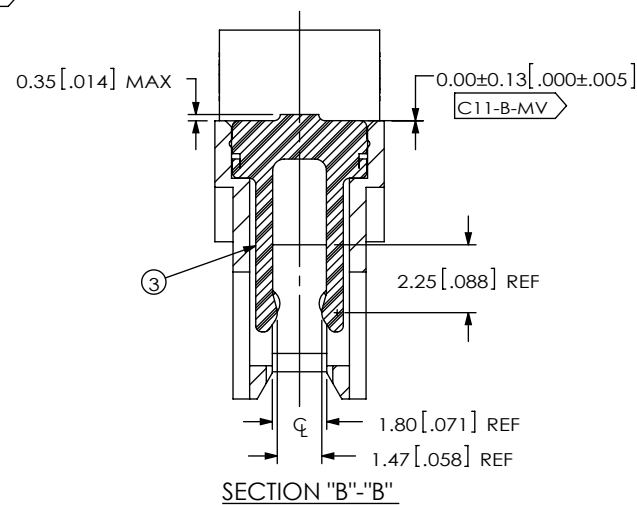
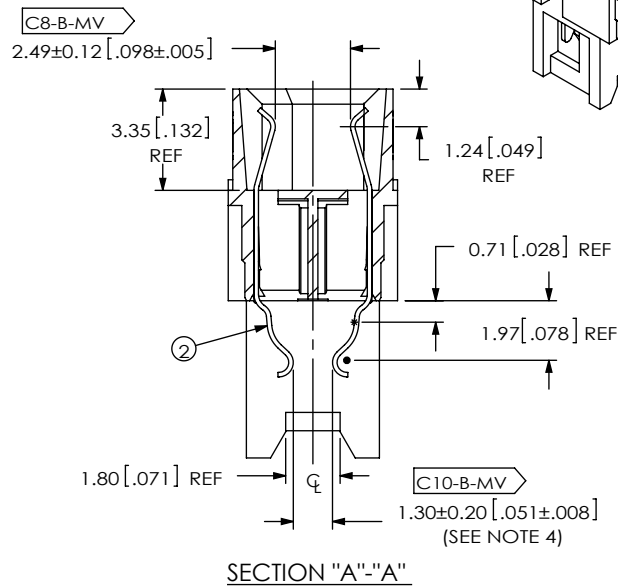
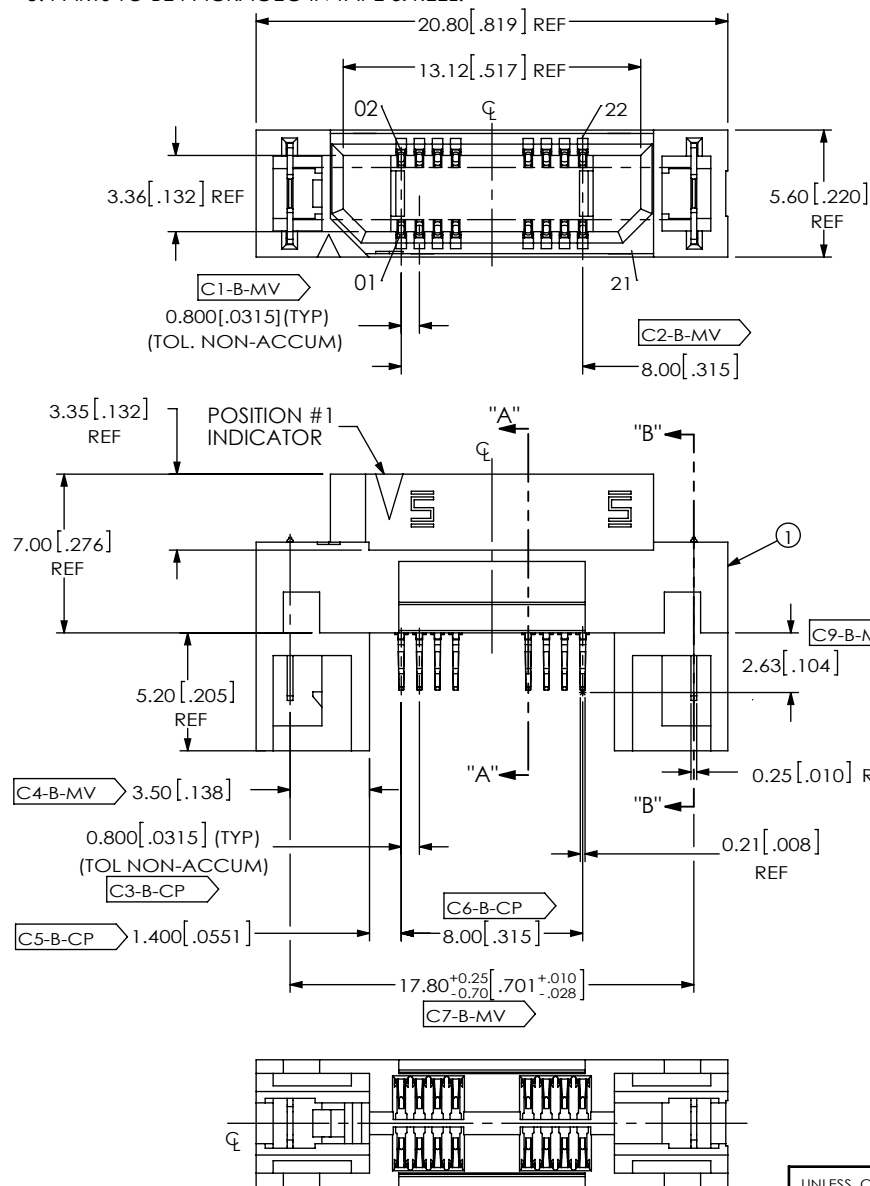
REVISIONS

0	JS	J HENRY
9/16/2013	ECN-211577	
ISSUE FOR REVIEW.		
A	SW	J HENRY
9/21/2013	ECN-212176	
RELEASE FOR PRODUCTION; BOM: CHG ITEM 4 FROM CT-ASP TO CT-ASP4039MS & QUANTITY TO .00444. SHT 2: ADD PACKAGING VIEW.		

NOTES:

- 11 POSITIONS NOT OFFERED AS STANDARD.
- ◻◻◻◻ REPRESENTS A CRITICAL DIMENSION.
- MINIMUM PUSHOUT FORCE: 2.22N[.5 LB].
- TO BE MEASURED USING GAGE PINS.
- PARTS TO BE PACKAGED IN TAPE & REEL.

DESIGNED & DIMENSIONED IN MILLIMETERS [INCHES]



BY SIGNING THIS DOCUMENT YOU ARE ACCEPTING THE CONDITIONS SET WITHIN. YOUR REQUIREMENTS MUST BE LISTED WITHIN THIS DRAWING. WHERE NO DIRECTION FROM THE CUSTOMER IS IDENTIFIED SAMTEC'S PROCESS REQUIREMENTS WILL BE USED.

DATE: _____
 COMPANY: _____
 CUSTOMER SIGNATURE: _____
 PRINTED NAME: _____
 PHONE NO.: _____
 EXCEPTIONS: _____

ITEM NO.	PART NUMBER	QUANTITY	MATERIAL
1	ERF8-011-D-EM2	1.0000	VECTRA E130i, COLOR: BLACK
2	C-221-01-S	22.000	BeCu, ALLOY 390 HT
3	WT-17-01-T	2.0000	PHOS BRONZE, 510 SPRING TEMPER
4	CT-ASP4039MS	.00444	CONDUCTIVE POLYMER

A

UNLESS OTHERWISE SPECIFIED, DIMENSIONS ARE IN MILLIMETERS. TOLERANCES ARE:
 DECIMALS ANGLES
 X.X: ±0.3 [.01] 2°
 X.XX: ±0.13 [.005]
 X.XXX: ±0.051 [.0020]

PROPRIETARY NOTE

THIS DOCUMENT CONTAINS INFORMATION CONFIDENTIAL AND PROPRIETARY TO SAMTEC, INC. AND SHALL NOT BE REPRODUCED OR TRANSFERRED TO OTHER DOCUMENTS OR DISCLOSED TO OTHERS OR USED FOR ANY PURPOSE OTHER THAN THAT WHICH IT WAS OBTAINED WITHOUT THE EXPRESSED WRITTEN CONSENT OF SAMTEC, INC.

samtec

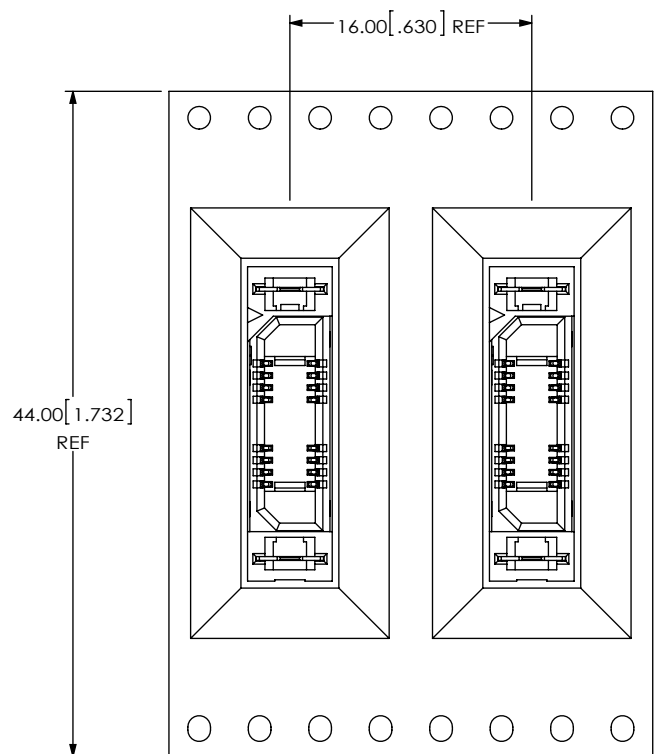
520 PARK EAST BLVD, NEW ALBANY, IN 47150
 PHONE: 812-944-6733 FAX: 812-948-5047
 e-Mail: info@SAMTEC.com code 55322

DO NOT SCALE DRAWING SHEET SCALE: 3:1
 PLATING:
 CONTACT AREA: .000030 GOLD OVER .000050 NICKEL
 REMAINDER: .000200 REF TIN OVER .000050 NICKEL

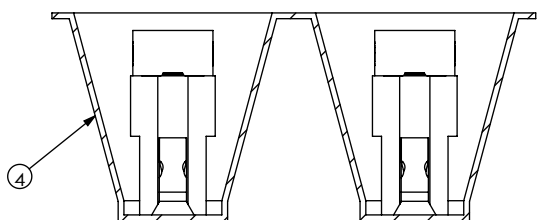
DESCRIPTION: MODIFIED ERF8 ASSEMBLY

DWG. NO. ASP-177706-01

BY: JERRY SU 09/16/2013 SHEET 1 OF 2



USER DIRECTION OF UN-REELING →
POCKET NOT DETAILED



A PACKAGING VIEW

PROPRIETARY NOTE

THIS DOCUMENT CONTAINS INFORMATION CONFIDENTIAL AND PROPRIETARY TO SAMTEC, INC. AND SHALL NOT BE REPRODUCED OR TRANSFERRED TO OTHER DOCUMENTS OR DISCLOSED TO OTHERS OR USED FOR ANY PURPOSE OTHER THAN THAT WHICH IT WAS OBTAINED WITHOUT THE EXPRESSED WRITTEN CONSENT OF SAMTEC, INC.



520 PARK EAST BLVD, NEW ALBANY, IN 47150
PHONE: 812-944-6733 FAX: 812-948-5047
e-Mail: info@SAMTEC.com code 55322

SHEET SCALE: 2:1

DESCRIPTION:
MODIFIED ERF8 ASSEMBLY

DWG. NO.
ASP-177706-01

BY: JERRY SU 09/16/2013 SHEET 2 OF 2