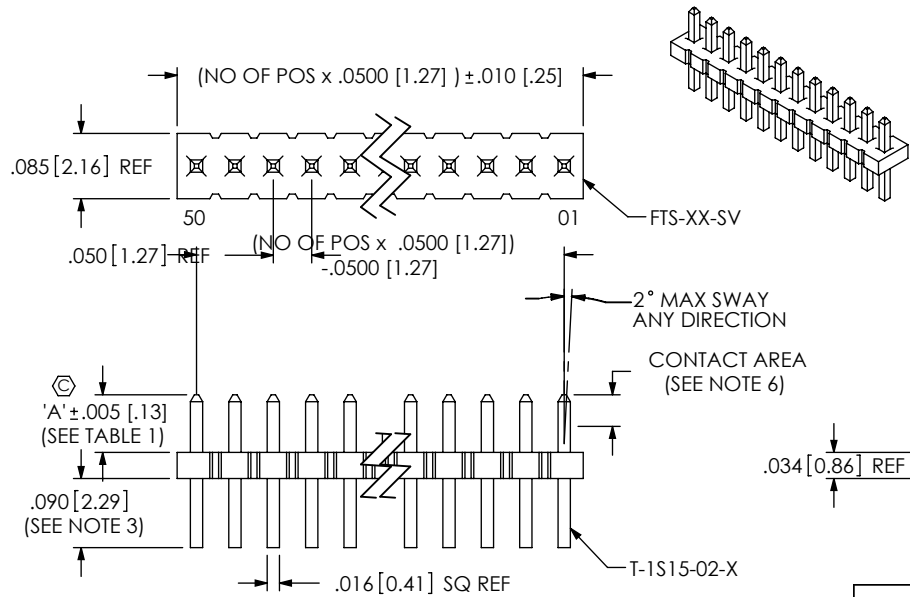


DO NOT SCALE FROM THIS PRINT



FTS-1XX-XX-X-SX

No OF POSITIONS
-02 THRU -50

TAIL OPTION
-S: SINGLE ROW THROUGH HOLE (SEE FIG 1)
-SV: SINGLE ROW VERTICAL SURFACE MOUNT (SEE FIG 2)

LEAD STYLE
-01: .120 [3.05] POST
-02: .075 [1.91] POST
-03: .065 [1.65] POST

PLATING SPECIFICATION
-L: 10µ" LIGHT SELECTIVE GOLD IN CONTACT AREA, MATTE TIN ON TAIL
-F: 3µ" FLASH SELECTIVE GOLD IN CONTACT AREA, MATTE TIN ON TAIL
-H: 30µ" HEAVY GOLD IN CONTACT AREA, 3µ" GOLD ON TAIL
-S: 30µ" SELECTIVE GOLD IN CONTACT AREA, MATTE TIN ON TAIL
-G: 10µ" GOLD IN CONTACT AREA, 3µ" GOLD ON TAIL

FIG 1
FTS-1XX-XX-X-S

TABLE 1		
LEAD STYLE	"A"	"B"
-01	.120 [3.05]	.086 [2.18]
-02	.075 [1.91]	.041 [1.04]
-03	.065 [1.65]	.031 [.79]

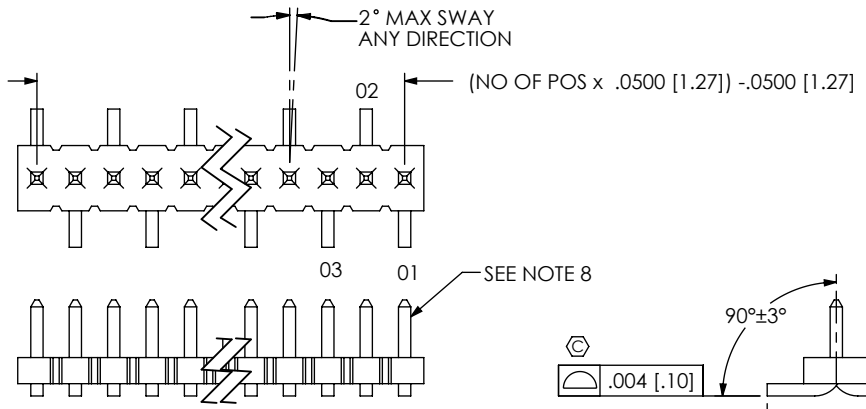
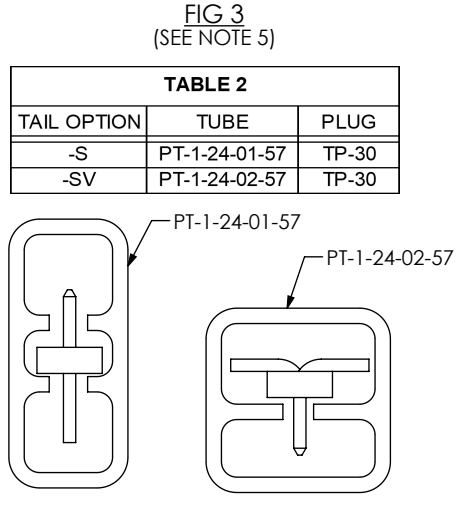
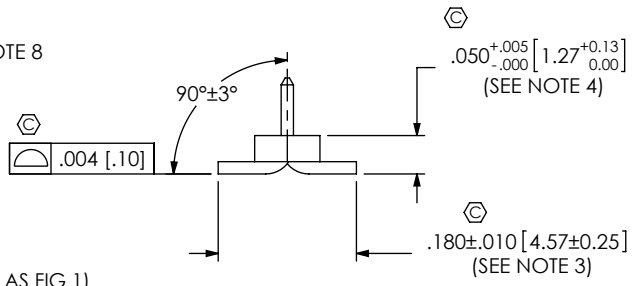


FIG 2
FTS-1XX-XX-X-SV
(DIFFERENT AS SHOWN, OTHERWISE SAME AS FIG 1)



NOTES:

- ⊕ REPRESENTS A CRITICAL DIMENSION.
- PARTS MAY BE CUT TO POSITION.
- SHEAR TAILS TO DIMENSION SHOWN.
- MEASURED AT BEND RADIUS, NOT AT END OF PIN.
- TUBE ONLY -05 THROUGH -50 POSITIONS; LAYER PACKAGE -02 THROUGH -04 POSITIONS
- GOLD PLATING TO BE ON POST, TIN PLATING TO BE ON TAIL.
- MAXIMUM CUT FLASH: .015 [.38]
- USE T-1S26-03-X FOR MACHINE FILL AND T-1S15-03-X FOR HAND FILL.
- MINIMUM PIN RETENTION: .5 LB
- FILL BODY SO THAT THE LEAD IN ON THE CORE IS ON THE TAIL SIDE.
- MAXIMUM BURR ALLOWANCE: .003" [.08"]

UNLESS OTHERWISE SPECIFIED, DIMENSIONS ARE IN INCHES. TOLERANCES ARE:

DECIMALS	ANGLES
.XX: ±.01 [.3]	2°
.XXX: ±.005 [.13]	
.XXXX: ±.0020 [.051]	

PROPRIETARY NOTE
THIS DOCUMENT CONTAINS CONFIDENTIAL AND PROPRIETARY INFORMATION AND ALL DESIGN, MANUFACTURING, REPRODUCTION, USE, PATENT RIGHTS AND SALES RIGHTS ARE EXPRESSLY RESERVED BY SAMTEC, INC. THIS DOCUMENT SHALL NOT BE DISCLOSED, IN WHOLE OR PART, TO ANY UNAUTHORIZED PERSON OR ENTITY NOR REPRODUCED, TRANSFERRED OR INCORPORATED IN ANY OTHER PROJECT IN ANY MANNER WITHOUT THE EXPRESS WRITTEN CONSENT OF SAMTEC, INC.

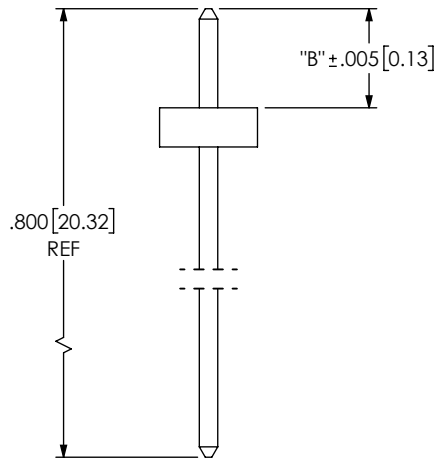
MATERIAL: DO NOT SCALE DRAWING SHEET SCALE: 4:1
INSULATOR: LCP, UL 94 VO
COLOR: BLACK
TERMINAL: PHOS BRONZE

DESCRIPTION:
.050 C.L. LOW PROFILE TERMINAL STRIP ASSEMBLY

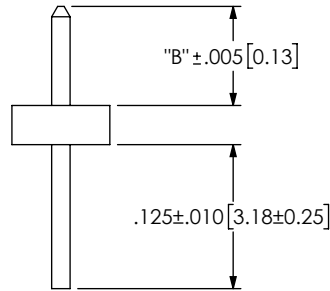
DWG. NO.
FTS-1XX-XX-X-SX



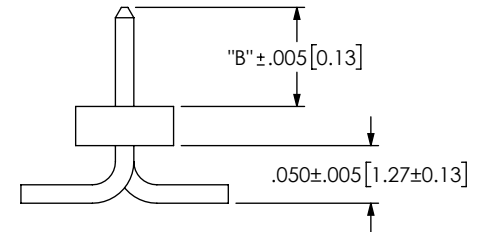
BY: BRATCHER 6-8-95 SHEET 1 OF 2



IN-PROCESS 1
(FORM FTS-1XX-XX-X-SV)



IN-PROCESS 2
(FORM FTS-1XX-XX-X-SV)



IN-PROCESS 3
(FORM FTS-1XX-XX-X-SV)

* PROPRIETARY NOTE *
THIS DOCUMENT CONTAINS CONFIDENTIAL AND PROPRIETARY INFORMATION AND ALL DESIGN, MANUFACTURING, REPRODUCTION, USE, PATENT RIGHTS AND SALES RIGHTS ARE EXPRESSLY RESERVED BY SAMTEC, INC. THIS DOCUMENT SHALL NOT BE DISCLOSED, IN WHOLE OR PART, TO ANY UNAUTHORIZED PERSON OR ENTITY NOR REPRODUCED, TRANSFERRED OR INCORPORATED IN ANY OTHER PROJECT IN ANY MANNER WITHOUT THE EXPRESS WRITTEN CONSENT OF SAMTEC, INC.



520 PARK EAST BLVD, NEW ALBANY, IN 47150
PHONE: 812-944-6733 FAX: 812-948-5047
e-Mail info@SAMTEC.com code 55322

DO NOT SCALE DRAWING

SHEET SCALE: 5:1

DESCRIPTION:
.050 C.L. LOW PROFILE TERMINAL STRIP ASSEMBLY

DWG. NO. **FTS-1XX-XX-X-SX**

BY: BRATCHER 6-8-95

SHEET 2 OF 2