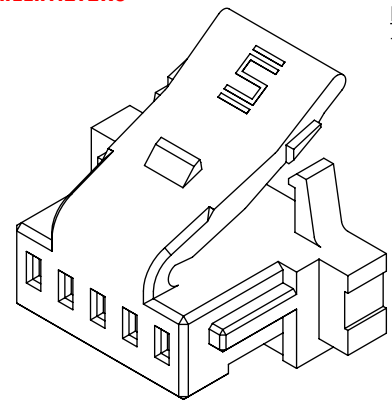
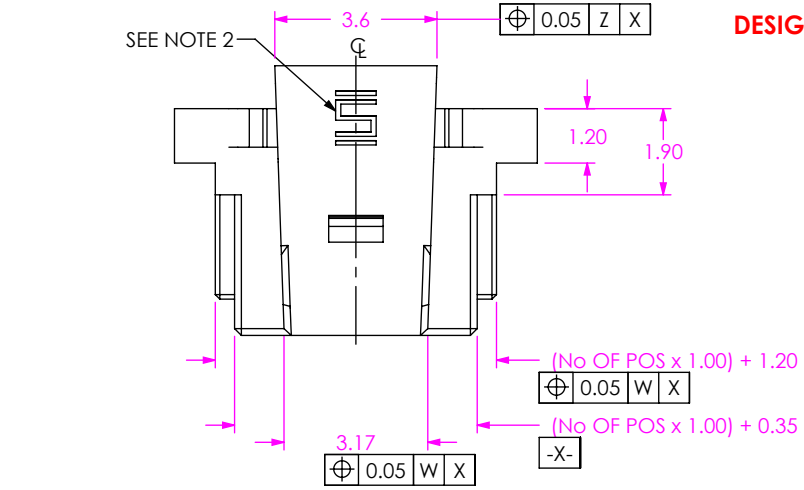


DO NOT SCALE FROM THIS PRINT

DESIGNED & DIMENSIONED IN MILLIMETERS

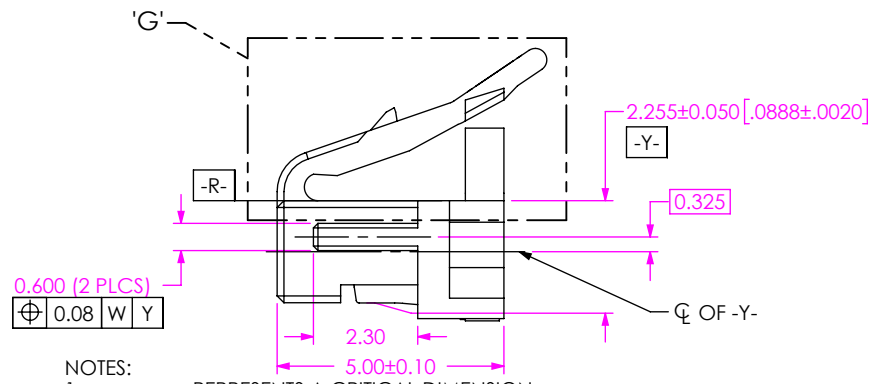
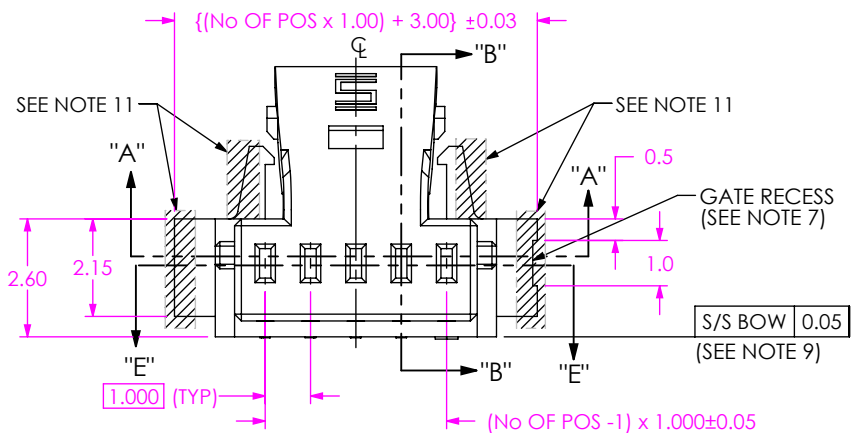


ISS1-XX-L

ROW SPECIFICATION  
-S: SINGLE ROW

OPTION  
-L: POSITIVE LATCH

No OF POSITIONS  
-02 THRU -20



- NOTES:
1. REPRESENTS A CRITICAL DIMENSION.
  2. SAMTEC LOGO SHALL APPEAR AT TWO EQUALLY SPACED LOCATIONS ON SURFACE SHOWN, APPROXIMATELY 1.43 X 0.90.
  3. ALL MULTIPLE CAVITY MOLDS SHALL IDENTIFY EACH CAVITY WITH A NUMBER DESIGNATION LOCATED WHERE SHOWN.
  4. ALL IDENTIFICATION MARKS MUST NOT STAND GREATER THAN 0.05 OFF THE SURFACE OF THE PART.
  5. MOLDED SURFACES SHALL BE CONSISTENT AND SMOOTH. SURFACES TO BE FREE OF SCRATCHES, NICKS, SINK AREAS, VOIDS OR OTHER BLEMISHES.
  6. T/B BOW TO BE MEASURED ON BOTH SIDES OF PART IN THE AREA DEFINED.
  7. GATE PAD TO BE RECESSED 0.10.
  8. SPECIFIED POSITIONS TO BE IDENTIFIED WHERE SHOWN AND TO BE RAISED 0.02.
  9. S/S BOW TO BE MEASURED ON BOTH SIDES OF PART.
  10. POSITION 1 TO BE RAISED 0.05.
  11. MAX FLASH ALLOWED IN THIS AREA: 0.10.
  12. PARTS TO BE PACKAGED IN ESD BUBBLE BAG/S INSIDE THE BOX. NO LOOSE PARTS.
  13. FLATTEN THE BODY BEFORE MEASUREMENT.

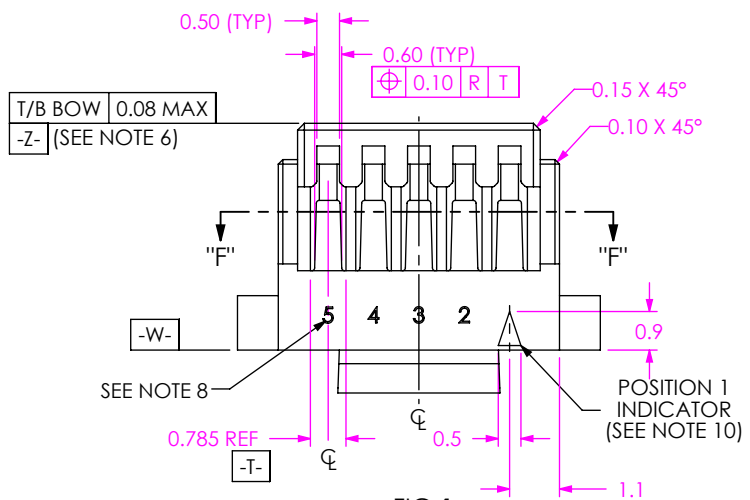
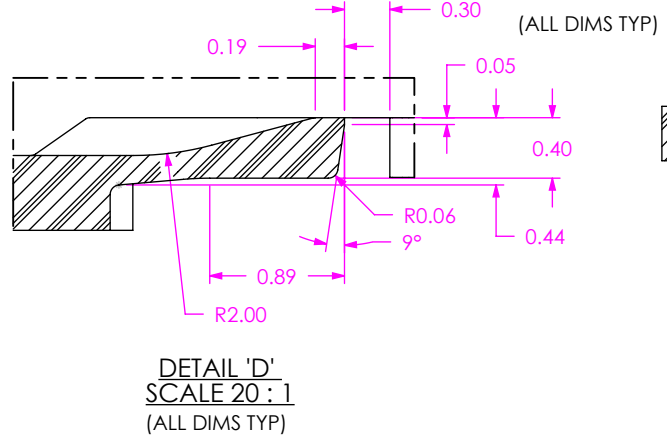
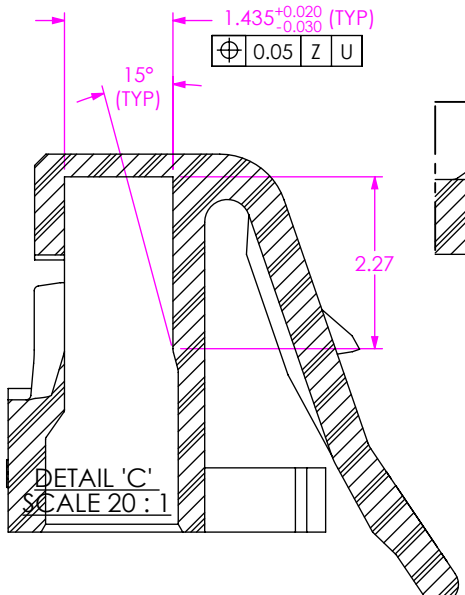
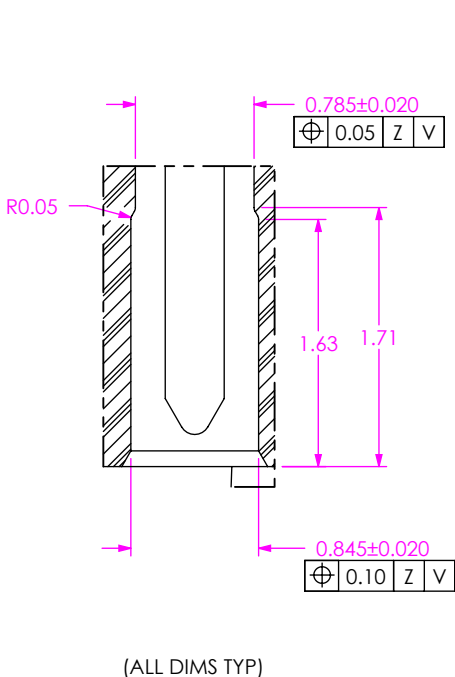
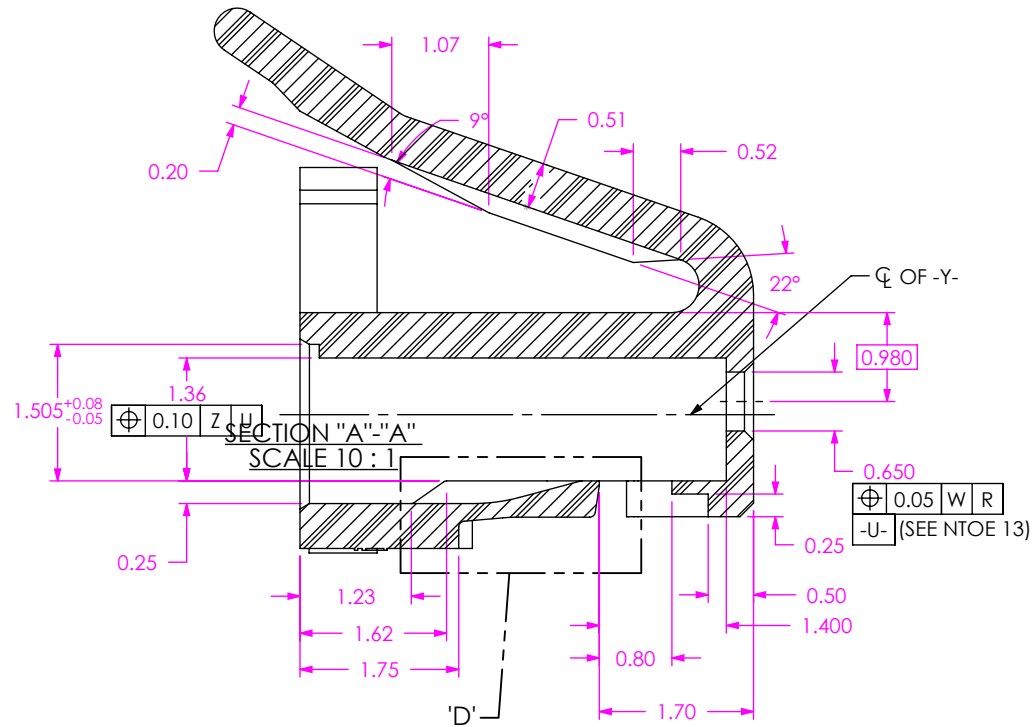
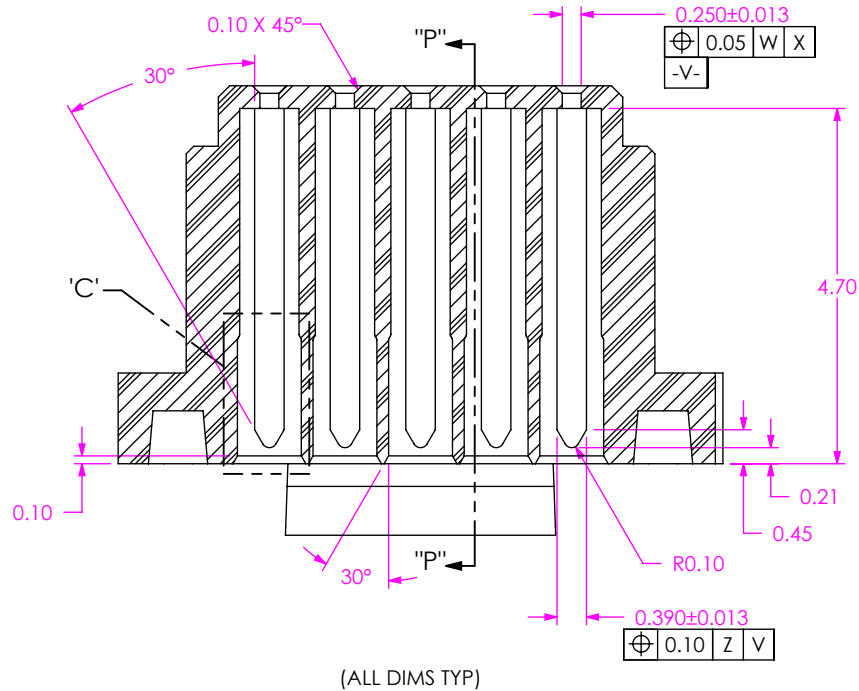
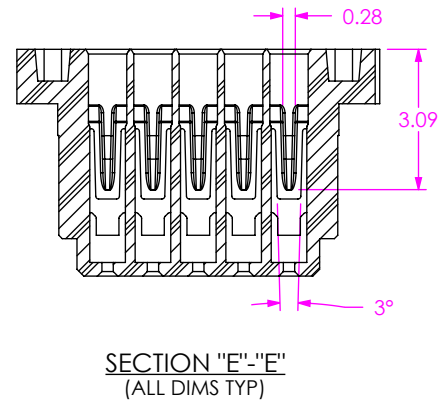


FIG 1  
ISS1-05-L SHOWN  
(FOR POSITIONS -05 THRU -20)

UNLESS OTHERWISE SPECIFIED, DIMENSIONS ARE IN MILLIMETERS.		* PROPRIETARY NOTE	
TOLERANCES ARE:		THIS DOCUMENT CONTAINS CONFIDENTIAL AND PROPRIETARY INFORMATION AND ALL DESIGN, MANUFACTURING, REPRODUCTION, USE, PATENT RIGHTS AND SALES RIGHTS ARE EXPRESSLY RESERVED BY SAMTEC, INC. THIS DOCUMENT SHALL NOT BE DISCLOSED, IN WHOLE OR PART, TO ANY UNAUTHORIZED PERSON OR ENTITY NOR REPRODUCED, TRANSFERRED OR INCORPORATED IN ANY OTHER PROJECT IN ANY MANNER WITHOUT THE EXPRESS WRITTEN CONSENT OF SAMTEC, INC.	
DECIMALS	ANGLES		
X.X: ±0.3	2°		
X.XX: ±0.05			
X.XXX: ±0.025			
MATERIAL:	DO NOT SCALE DRAWING	SHEET SCALE: 6:1	DESCRIPTION:
ZYTEL 103FHS / 3-4%RM60560, COLOR: LIGHT GREEN (PANTONE 7485C)			1.00 MM PITCH S1SX BODY
MAX REGRIND: 0%			DWG. NO.
MAX FLASH ALLOWED: 0.05			ISS1-XX-L
MAX GATE VESTIGE: 0.05			BY: JESSIE W 12/1/2016 SHEET 1 OF 4



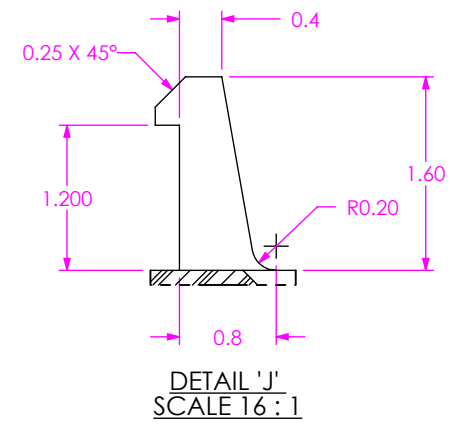
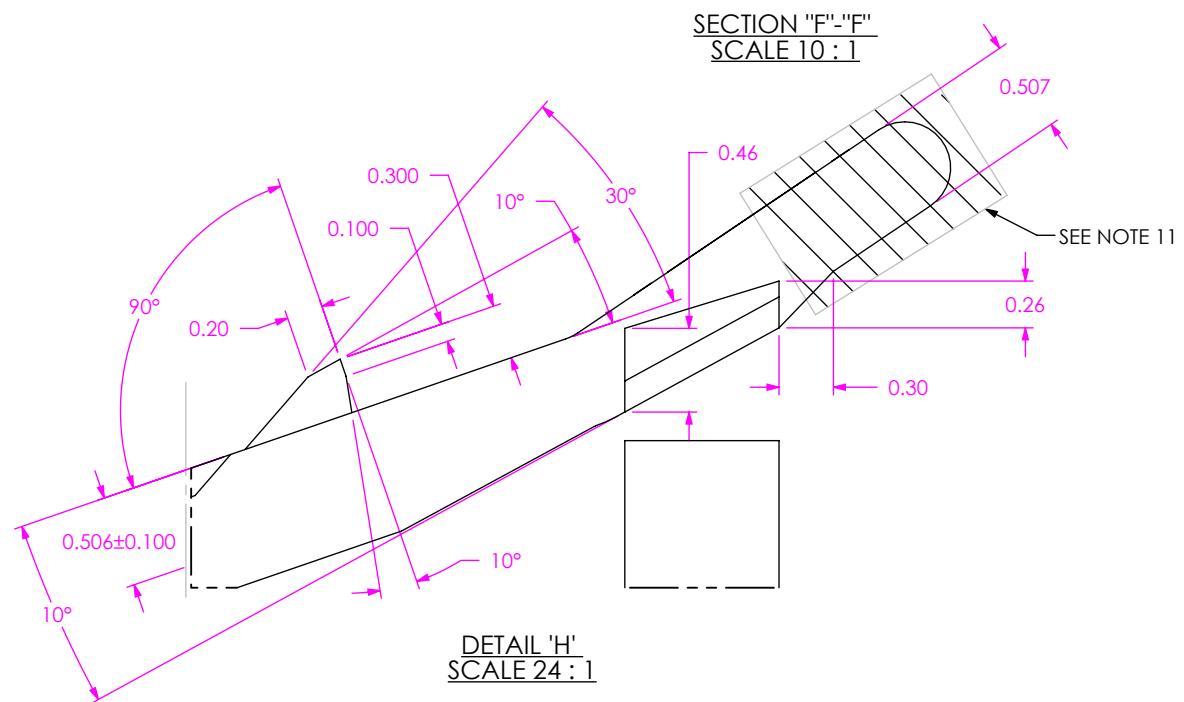
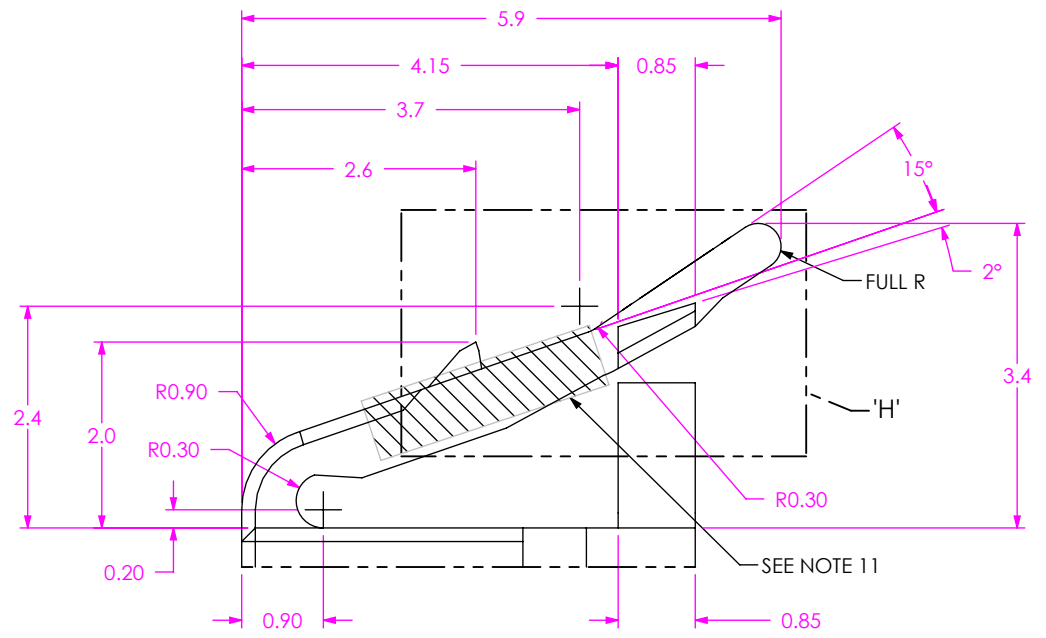
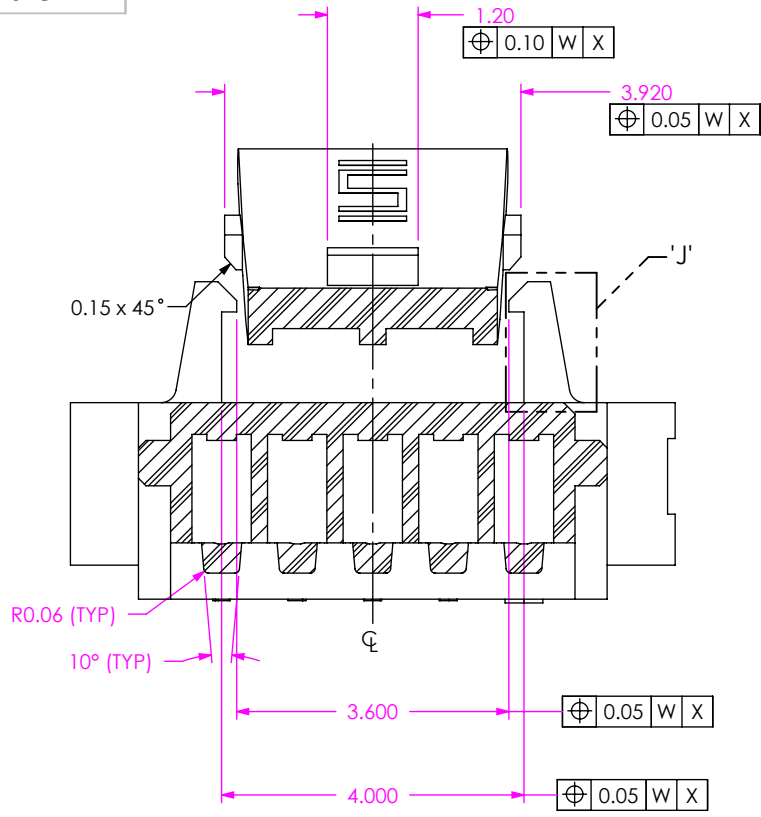
SECTION "P"- "P"  
SCALE 10 : 1



<p>PROPRIETARY NOTE</p> <p>THIS DOCUMENT CONTAINS CONFIDENTIAL AND PROPRIETARY INFORMATION AND ALL DESIGN, MANUFACTURING, REPRODUCTION USE, PATENT RIGHTS AND SALES RIGHTS ARE EXPRESSLY RESERVED BY SAMTEC, INC. THIS DOCUMENT SHALL NOT BE DISCLOSED, IN WHOLE OR PART, TO ANY UNAUTHORIZED PERSON OR ENTITY NOR REPRODUCED, TRANSFERRED OR INCORPORATED IN ANY OTHER PROJECT IN ANY MANNER WITHOUT THE EXPRESS WRITTEN CONSENT OF SAMTEC, INC.</p>	<p>DESCRIPTION: 1.00 MM PITCH S1SX BODY</p>	
	<p>DWG. NO. ISS1-XX-L</p>	
	<p>DO NOT SCALE DRAWING</p> <p>SHEET SCALE: 6:1</p>	<p>BY: JESSIE W 12/1/2016 SHEET 2 OF 4</p>



520 PARK EAST BLVD, NEW ALBANY, IN 47150  
PHONE: 812-944-6733 FAX: 812-948-5047  
e-Mail info@SAMTEC.com code 55322



<p>DO NOT SCALE DRAWING</p> <p>SHEET SCALE: 6:1</p>	<p><b>PROPRIETARY NOTE</b></p> <p>THIS DOCUMENT CONTAINS CONFIDENTIAL AND PROPRIETARY INFORMATION AND ALL DESIGN, MANUFACTURING, REPRODUCTION, USE, PATENT RIGHTS AND SALES RIGHTS ARE EXPRESSLY RESERVED BY SAMTEC, INC. THIS DOCUMENT SHALL NOT BE DISCLOSED, IN WHOLE OR PART, TO ANY UNAUTHORIZED PERSON OR ENTITY NOR REPRODUCED, TRANSFERRED OR INCORPORATED IN ANY OTHER PROJECT IN ANY MANNER WITHOUT THE EXPRESS WRITTEN CONSENT OF SAMTEC, INC.</p>	<p><b>samtec</b></p> <p>520 PARK EAST BLVD, NEW ALBANY, IN 47150 PHONE: 812-944-6733 FAX: 812-948-5047 e-Mail info@SAMTEC.com code 55322</p>
	<p>DESCRIPTION:</p> <p>1.00 MM PITCH S1SX BODY</p>	
	<p>DWG. NO.</p> <p>ISS1-XX-L</p>	
<p>BY: JESSIE W</p>	<p>12/1/2016</p>	<p>SHEET 3 OF 4</p>

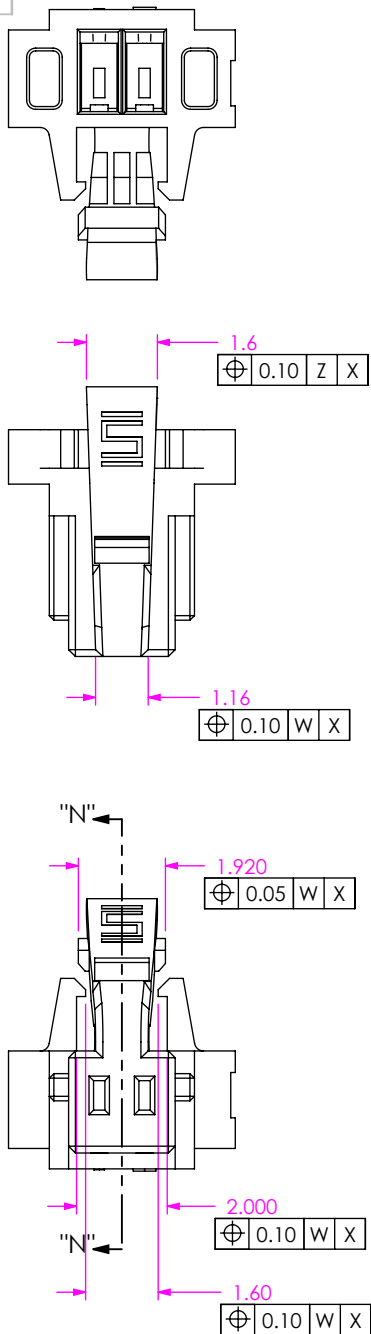
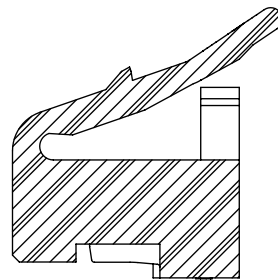
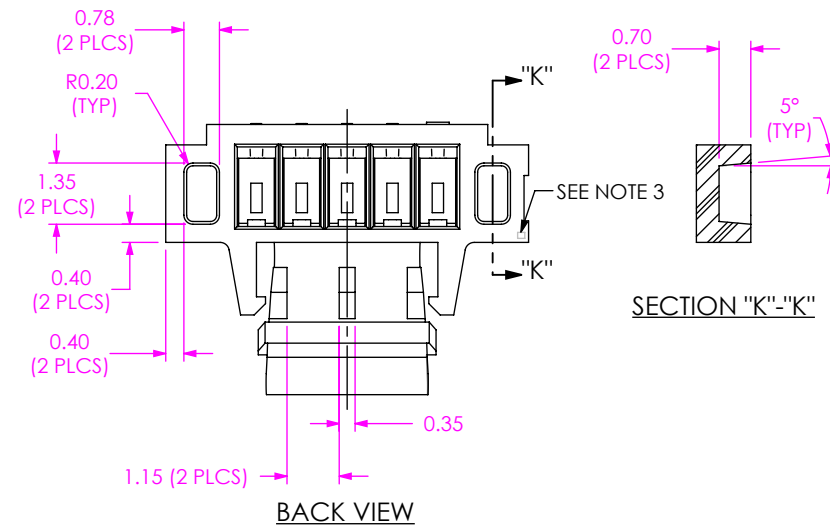


FIG 2  
ISS1-02-L SHOWN  
(DIFFERENT AS SHOWN, OTHERWISE SAME AS FIG 1)  
(FOR POSITIONS -02 THRU -04)

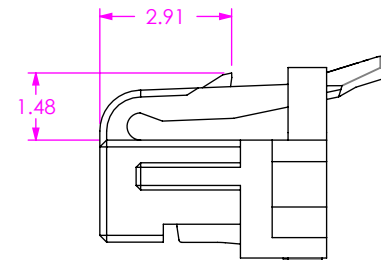


SECTION "N"- "N"



BACK VIEW

SECTION "K"- "K"



PRE-LOAD VIEW

PROPRIETARY NOTE  
THIS DOCUMENT CONTAINS CONFIDENTIAL AND PROPRIETARY INFORMATION AND ALL DESIGN, MANUFACTURING, REPRODUCTION, USE, PATENT RIGHTS AND SALES RIGHTS ARE EXPRESSLY RESERVED BY SAMTEC, INC. THIS DOCUMENT SHALL NOT BE DISCLOSED, IN WHOLE OR PART, TO ANY UNAUTHORIZED PERSON OR ENTITY NOR REPRODUCED, TRANSFERRED OR INCORPORATED IN ANY OTHER PROJECT IN ANY MANNER WITHOUT THE EXPRESS WRITTEN CONSENT OF SAMTEC, INC.



520 PARK EAST BLVD, NEW ALBANY, IN 47150  
PHONE: 812-944-6733 FAX: 812-948-5047  
e-Mail info@SAMTEC.com code 55322

DO NOT SCALE DRAWING

SHEET SCALE: 6:1

DESCRIPTION:  
1.00 MM PITCH S1SX BODY

DWG. NO.  
ISS1-XX-L

BY: JESSIE W 12/1/2016 SHEET 4 OF 4