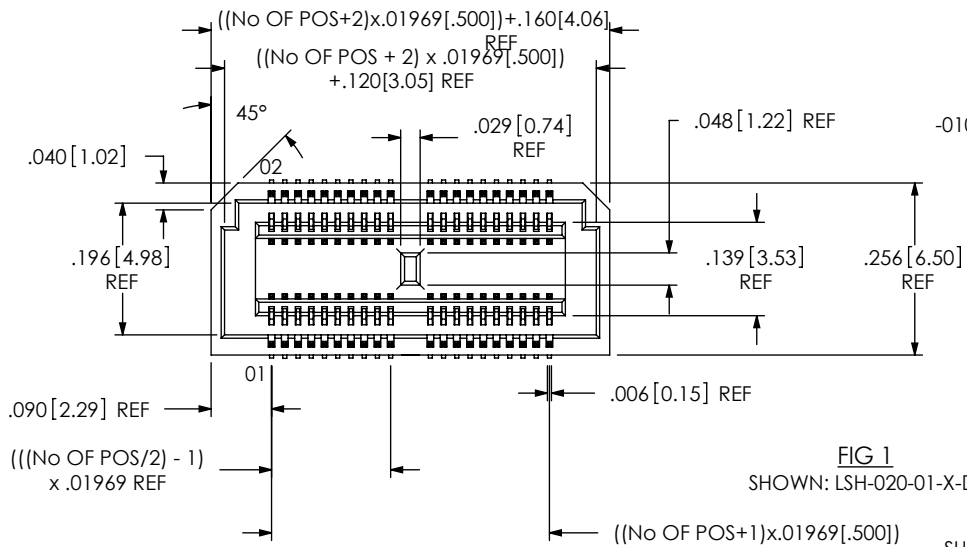


DO NOT  
SCALE FROM  
THIS PRINT



**LSH-XXX-01-X-D-A-X-XX**

No OF POSITIONS  
-010, -020, -030, -040, -050,  
(PER ROW)

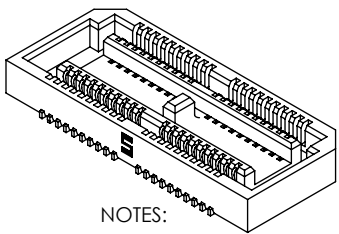
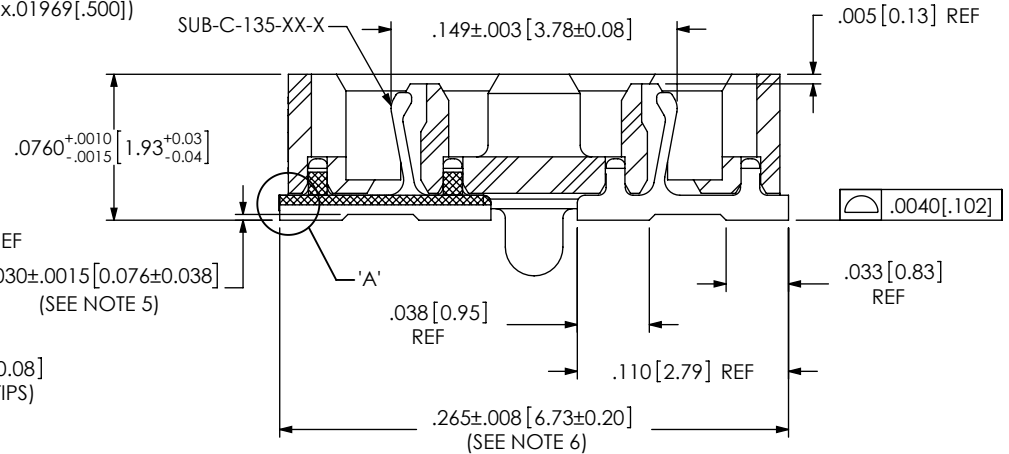
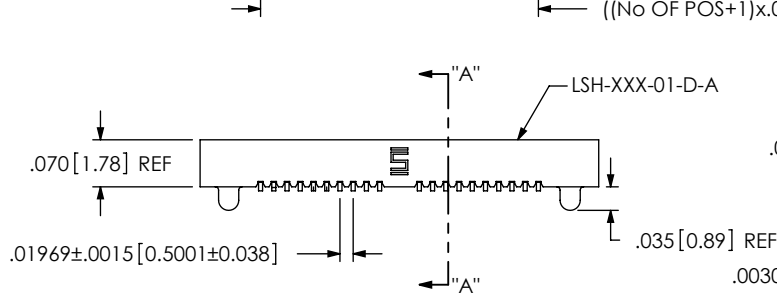
LEAD STYLE  
-01: SURFACE MOUNT  
(USE SUB-C-135-01-X)

PLATING SPECIFICATION  
-G: 10μ" GOLD IN CONTACT AREA  
3μ" GOLD ON TAIL  
-H: 30μ" GOLD IN CONTACT AREA  
3μ" GOLD ON TAIL

PAD  
-K: POLYAMIDE FILM PAD  
(USE K-DOT-.295-.406-.005, SEE FIG 2)

-A: ALIGNMENT PIN

ROW SPECIFICATION  
-D: DOUBLE (USE LSH-XXX-01-D-A)



NOTES:

1.  $\text{C}$  REPRESENTS A CRITICAL DIMENSION.
2. BURR ALLOWANCE: .001[.03] MAX IN THE MATERIAL THICKNESS DIRECTION.
3. MINIMUM PUSHOUT FORCE: 5 OZ.
4. ALL PART VARIATIONS TO BE PACKAGED IN A PT-1-24-01-97 TUBE WITH TWO TP-12 PLUGS PER TUBE EXCEPT -K OPTION WHICH WILL USE PT-1-24-02-23 AND TP-12.
5. DIMENSION APPLIES TO POST SHEARING GEOMETRY, DIMENSION INCLUDES SHEAR BURR.
6. MAX VARIATION BETWEEN ADJACENT CONTACTS TO BE .005[.13] MAX.
7. NOTE DELETED.
8. NOTE DELETED.
9. TUBES ARE STANDARD PACKAGING
10. ORDERS WILL BE PACKAGED ACCORDING TO THE SAMTEC PACKAGING EFFICIENCY STANDARDS (SPES) FOUND ON WWW.SAMTEC.COM
11. ATTACH LABEL TO EACH REEL

UNLESS OTHERWISE SPECIFIED,  
DIMENSIONS ARE IN INCHES.  
TOLERANCES ARE:  
DECIMALS ANGLES  
.XX: ±.01[.3] 2°  
.XXX: ±.005[.13]  
.XXXX: ±.0020[.051]

**PROPRIETARY NOTE**  
THIS DOCUMENT CONTAINS INFORMATION  
CONFIDENTIAL AND PROPRIETARY TO  
SAMTEC, INC. AND SHALL NOT BE REPRODUCED  
OR TRANSFERRED TO OTHER DOCUMENTS OR  
DISCLOSED TO OTHERS OR USED FOR ANY  
PURPOSE OTHER THAN THAT WHICH IT WAS  
OBTAINED WITHOUT THE EXPRESSED WRITTEN  
CONSENT OF SAMTEC, INC.

**samtec**

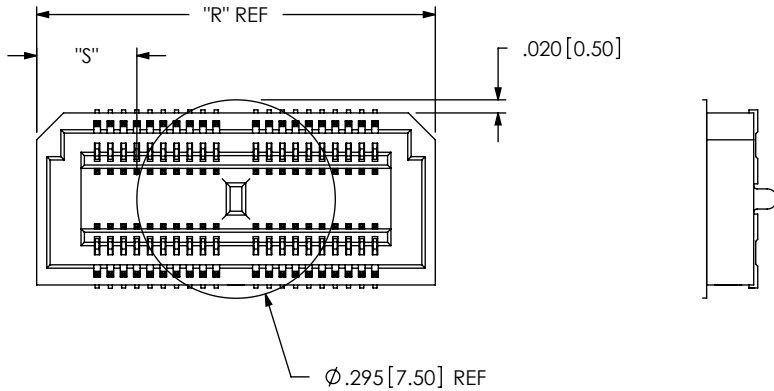
520 PARK EAST BLVD, NEW ALBANY, IN 47150  
PHONE: 812-944-6733 FAX: 812-948-5047  
e-Mail: info@SAMTEC.com code: 55322

**MATERIAL:** DO NOT SCALE DRAWING SHEET SCALE: 3.5:1  
INSULATOR: LCP, COLOR: BLACK  
CONTACT: BeCu

DESCRIPTION:  
**.5mm DOUBLE ROW SOCKET ASSEMBLY**  
DWG. NO. **LSH-XXX-01-X-D-A-X-XX**

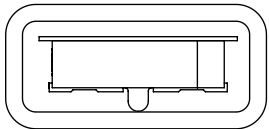
BY: ERIC M 7/1/99 SHEET 1 OF 2

FIG 2  
-K: POLYAMIDE FILM PAD  
(USE K-DOT-.295-.406-.005)



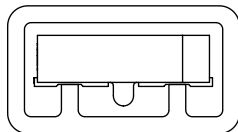
NOTE: "R" = ((No OF POSITIONS + 2) x .01969[.5000]) + .160[4.06]  
"S" = (("R" - .295[7.50]) / 2) ±.020[.51]

-K OPTION PACKAGING VIEW

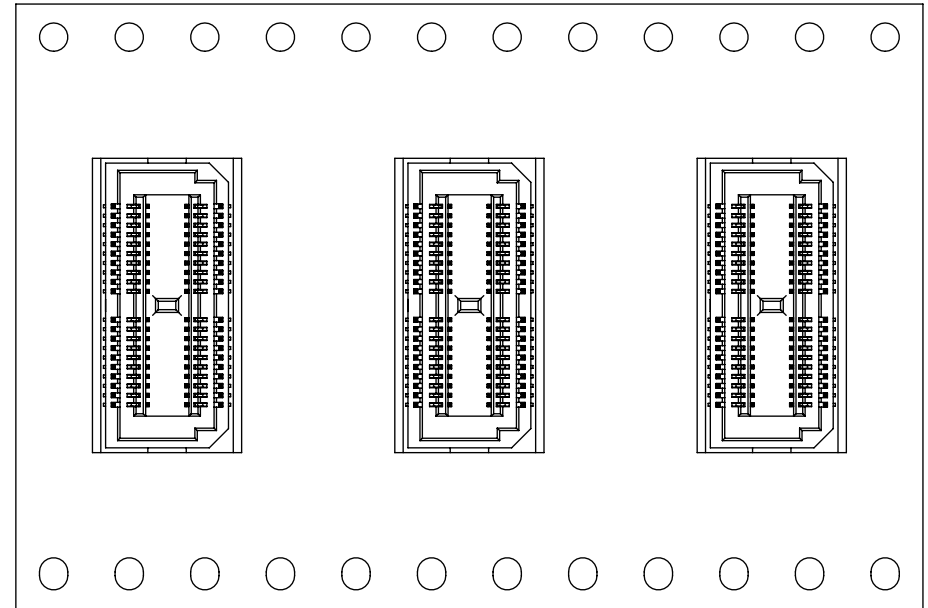


TUBE: PT-1-24-02-23  
PLUG: TP-12

(PARTS TO HAVE POSITIONS #1 LOADED  
IN SAME DIRECTION AS ARROW ON TUBE)  
(SEE NOTE 4)



TUBE: PT-1-24-01-97  
PLUG: TP-12



USER DIRECTION OF REELING →  
POCKET NOT DETAILED

F:\DWG\MISC\MKTG\LSH-XXX-01-X-D-A-X-XX-MKT.SLDDRW

**PROPRIETARY NOTE**  
THIS DOCUMENT CONTAINS INFORMATION  
CONFIDENTIAL AND PROPRIETARY TO  
SAMTEC, INC. AND SHALL NOT BE REPRODUCED  
OR TRANSFERRED TO OTHER DOCUMENTS OR  
DISCLOSED TO OTHERS OR USED FOR ANY  
PURPOSE OTHER THAN THAT WHICH IT WAS  
OBTAINED WITHOUT THE EXPRESSED WRITTEN  
CONSENT OF SAMTEC, INC.

DO NOT SCALE DRAWING

SHEET SCALE: 3.5:1



520 PARK EAST BLVD, NEW ALBANY, IN 47150  
PHONE: 812-944-6733 FAX: 812-948-5047  
e-Mail: info@SAMTEC.com code: 55322

DESCRIPTION:  
.5mm DOUBLE ROW SOCKET ASSEMBLY

DWG. NO.  
**LSH-XXX-01-X-D-A-X-XX**

BY: ERIC M 7/1/99 SHEET 2 OF 2