

DO NOT
SCALE FROM
THIS PRINT

TABLE 1			
ITEM	COMPONENT	-H	-HN
1	SUB ASSEMBLY	SUB-MCX-P-C-H-RA-CA1	SUB-MCX-P-C-HN-RA-CA1
2	CAP	MCX-CAP-001-F	MCX-CAP-001-N
3	FERRULE	MCX-FER-002-F	MCX-FER-002-N
4	INSULATOR	MCX-INS-001	MCX-INS-001

GENDER
-P: PLUG

TERMINATION
-CA1: CABLE
(RG174 OR RG316)

TYPE
-C: CABLE

PLATING SPECIFICATION

-H: 30 μ " GOLD CENTER CONTACT,
3 μ " GOLD OUTER CONTACT
-HN: 30 μ " GOLD CENTER CONTACT,
100 μ " NICKEL OUTER CONTACT
(SEE TABLE 1)

ORIENTATION

-RA: RIGHT ANGLE

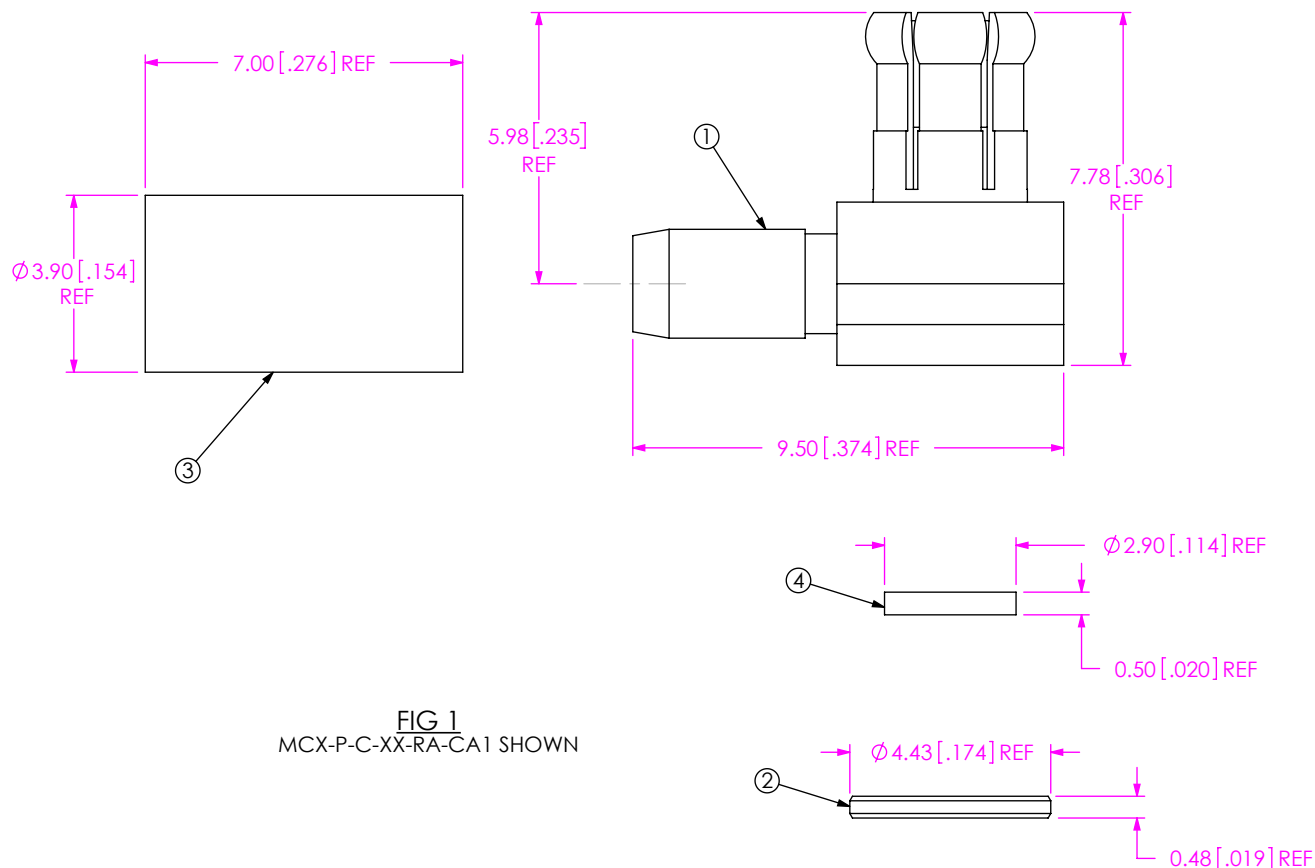


FIG 1
MCX-P-C-XX-RA-CA1 SHOWN

NOTES:

1. REPRESENTS A CRITICAL DIMENSION.
2. CENTER CONTACT PUSHOUT FORCE: 26.69 N [6LB] MIN
3. NOTE DELETED.
4. NOTE DELETED.
5. NOTE DELETED.
6. NOTE DELETED.
7. NOTE DELETED.
8. NOTE DELETED.

F:\DWG\MISC\MKTG\MCX-P-C-XX-RA-CA1-MKT.SLDDRW

UNLESS OTHERWISE SPECIFIED, DIMENSIONS ARE IN MILLIMETERS [INCHES]. TOLERANCES ARE:		PROPRIETARY NOTE	
DECIMALS	ANGLES	THIS DOCUMENT CONTAINS CONFIDENTIAL AND PROPRIETARY INFORMATION AND ALL DESIGN, MANUFACTURING, REPRODUCTION, USE, PATENT RIGHTS AND SALES RIGHTS ARE EXPRESSLY RESERVED BY SAMTEC, INC. THIS DOCUMENT SHALL NOT BE DISCLOSED, IN WHOLE OR PART, TO ANY UNAUTHORIZED PERSON OR ENTITY NOR REPRODUCED, TRANSFERRED OR INCORPORATED IN ANY OTHER PROJECT IN ANY MANNER WITHOUT THE EXPRESS WRITTEN CONSENT OF SAMTEC, INC.	
.X: ± 0.3 [.01]	5°		
.XX: ± 0.13 [.005]			
.XXX: ± 0.051 [.0020]			
MATERIAL:		DO NOT SCALE DRAWING SHEET SCALE: 1:0.16667	
SHELL, FERRULE, CAP: BRASS			
PIN: BRASS			
INSULATOR: PTFE			

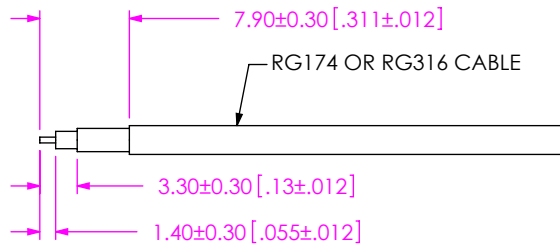
samtec

520 PARK EAST BLVD, NEW ALBANY, IN 47150
PHONE: 812-944-6733 FAX: 812-948-5047
e-Mail info@SAMTEC.com code 55322

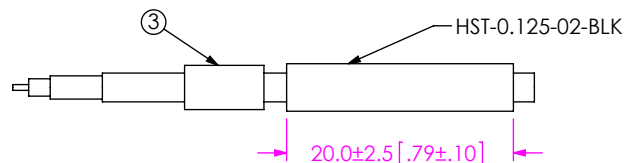
DESCRIPTION:
MCX RIGHT ANGLE CABLE PLUG, RG174 & RG316- 50 OHM

DWG. NO.
MCX-P-C-XX-RA-CA1

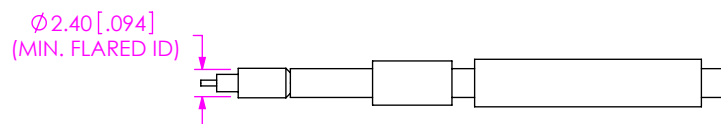
BY: R MUSSER 02/06/2008 SHEET 1 OF 2



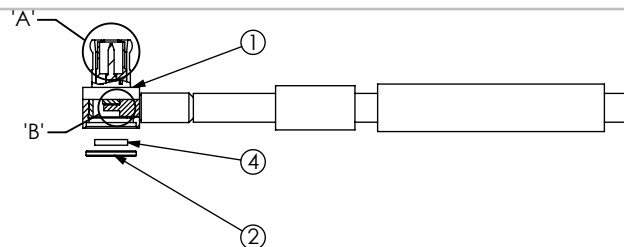
IN-PROCESS 1
STRIP AND TIN INNER CONDUCTOR



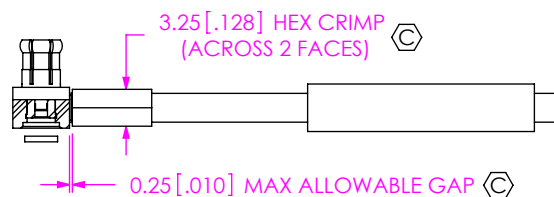
IN-PROCESS 2
ADD HEAT SHRINK TUBE AND FERRULE



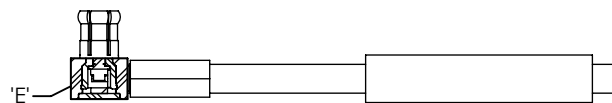
IN-PROCESS 3
FLARE SHIELD



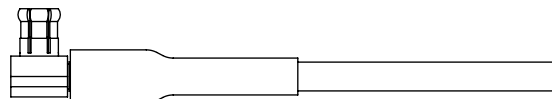
IN-PROCESS 4
ADD SUB-MCX-P-C-XX-RA-CA1



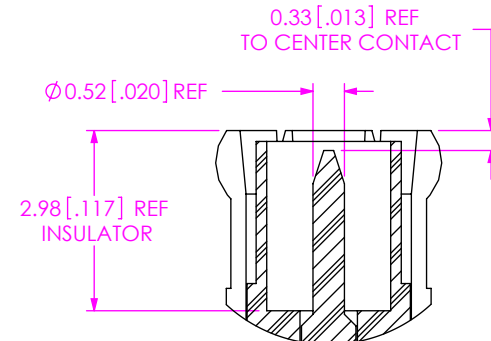
IN-PROCESS 5
CRIMP FERRULE AND SOLDER SIGNAL PIN
(USE RF CRIMP HAND TOOL
CAT-RF-FER-01 OR EQUIVALENT)



IN-PROCESS 6
INSERT INSULATOR AND CAP

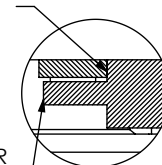


IN-PROCESS 7
APPLY HEAT SHRINK TUBING



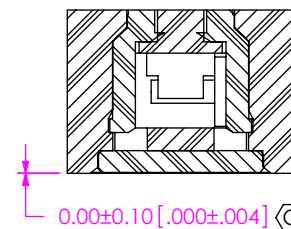
DETAIL 'A'
SCALE 8:1

END OF CABLE DIELECTRIC
SHOULD SEAT AGAINST
CONTACT CUP



CABLE CENTER CONDUCTOR
SHOULD NOT PROTRUDE
OUTSIDE CONTACT CUP
AFTER FERRULER IS CRIMPED

DETAIL 'B'
SCALE 6:1



0.00±0.10 [.000±.004]

PROPRIETARY NOTE
THIS DOCUMENT CONTAINS CONFIDENTIAL AND
PROPRIETARY INFORMATION AND ALL DESIGN,
MANUFACTURING, REPRODUCTION, USE, PATENT RIGHTS
AND SALES RIGHTS ARE EXPRESSLY RESERVED BY SAMTEC.
INC. THIS DOCUMENT SHALL NOT BE DISCLOSED, IN WHOLE
OR PART, TO ANY UNAUTHORIZED PERSON OR ENTITY NOR
REPRODUCED, TRANSFERRED OR INCORPORATED IN ANY
OTHER PROJECT IN ANY MANNER WITHOUT THE EXPRESS
WRITTEN CONSENT OF SAMTEC, INC.

DO NOT SCALE DRAWING
SHEET SCALE: 1:0.666667

samtec

520 PARK EAST BLVD, NEW ALBANY, IN 47150
PHONE: 812-944-6733 FAX: 812-948-5047
e-Mail info@SAMTEC.com code 55322

DESCRIPTION:
MCX RIGHT ANGLE CABLE PLUG, RG174 & RG316- 50 OHM

DWG. NO.
MCX-P-C-XX-RA-CA1

BY: R MUSSER 02/06/2008 SHEET 2 OF 2