

DO NOT
SCALE FROM
THIS PRINT

TABLE 2		
POS	"A"	"B"
-030	.839 [21.31]	.793 [20.13]
-060	1.627 [41.31]	1.580 [40.13]
-090	2.417 [61.38]	2.368 [60.13]
-120	3.204 [81.38]	3.155 [80.14]
-150	3.991 [101.37]	3.943 [100.14]

TABLE 1	
No OF POS	COPLANARITY INCLUDING GROUND PLANE
-030 THRU -060	.004 [0.10]
-090 THRU -150	.006 [0.15]

QSH-XXX-01-X-D-XXX-X-XX

No OF POSITIONS
-030, -060, -090,
*-120, *-150 (PER ROW)
(* = SEE NOTE 11)

LEAD STYLE
-01: .1280[3.25]

PLATING SPECIFICATION

(SEE NOTES 8, 10 & 12)

- S: 30μ" SELECTIVE GOLD IN CONTACT AREA, MATTE TIN ON TAIL (USE C126-21-S/T-1G2-01-L)
- F: 3μ" FLASH SELECTIVE IN CONTACT AREA, MATTE TIN ON TAIL (USE C126-21-F/T-1G2-01-F) (SEE NOTE 8)
- L: 10μ" LIGHT SELECTIVE GOLD IN CONTACT AREA, MATTE TIN ON TAIL (USE C126-21-L/T-1G2-01-L)
- H: 30μ" HEAVY GOLD IN CONTACT AREA, 3μ" GOLD ON TAIL (USE C126-21-H/T-1G2-01-G)
- C: 50μ" ELECTRO-POLISHED SELECTIVE GOLD IN CONTACT AREA, MATTE TIN ON TAIL (USE C126-21-C/T-1G2-01-L)

ROW SPECIFICATION

-D: DOUBLE (USE QSH-30-01-D-XX)

No OF BANKS

PACKAGING

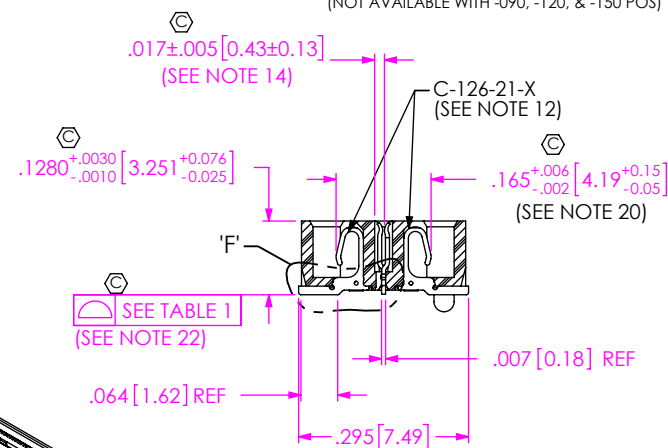
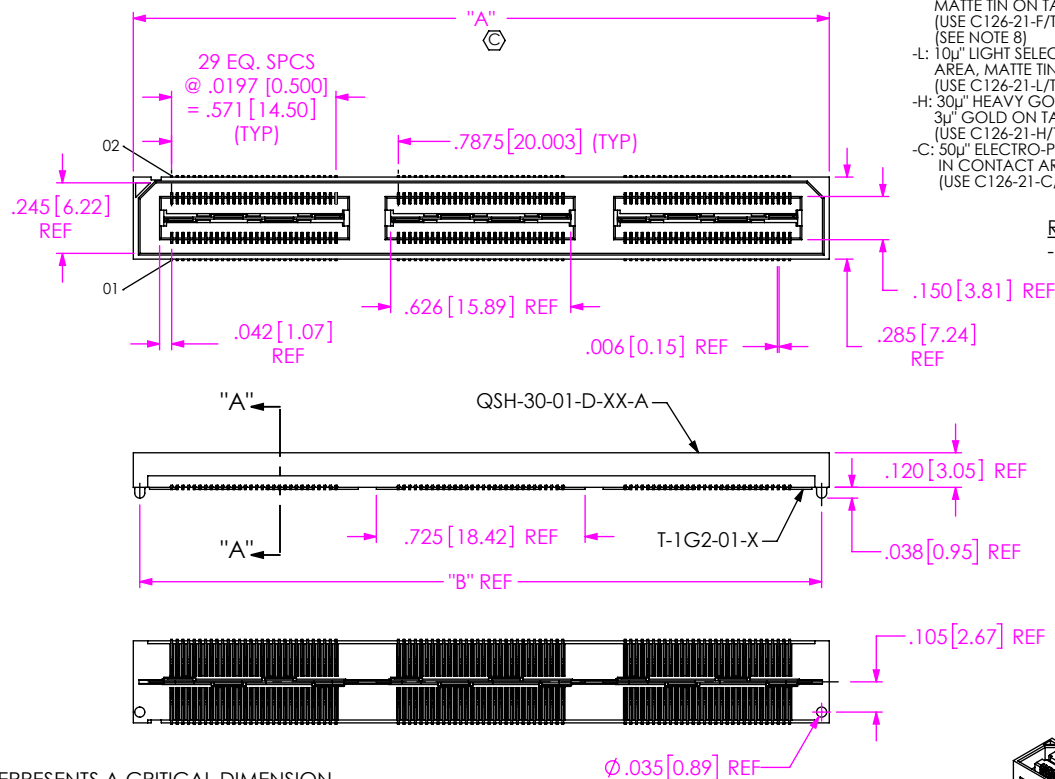
- BLANK: TRAY (SEE NOTES 16 & 19)
- TR: TAPE & REEL (SEE NOTES 16 & 18)
- (-090 POS MAX)
- FR: FULL REEL QTY TAPE & REEL (SEE NOTES 16 & 18)
- (-090 POS MAX)

PICK & PLACE OPTION

- K: POLYIMIDE FILM (USE K-DOT-.325-.450-.005, SEE FIG 3, SHT 2)

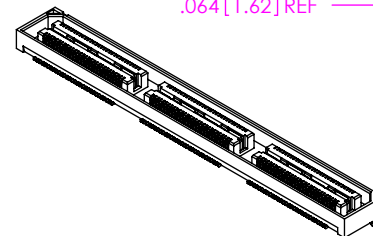
OPTIONS

- A: ALIGNMENT PINS (USE QSH-30-01-D-XX-A) (NOT AVAILABLE WITH -LC)
- LC: LOCKING CLIPS (USE LC-08-TM-01, SEE FIG 2, SHT 2) (NOT AVAILABLE WITH -A)
- (SEE NOTE 13)
- GP: GUIDE POSTS (USE QSH-30-01-D-XX-X-GP) (SEE FIG 4, SHT 3)
- (TAPE & REEL FOR -GP, -060 POS MAX)
- FL: FRICTION LOCKS (SEE FIG 5, SHT 3) (NOT AVAILABLE WITH -GP)
- RT1: RETENTION (MUST USE -A OPTION) (USE QSH-30-01-D-XX-A-RT1 & SUB-SC-05-01-FF, SEE FIG 6, SHT 4) (NOT AVAILABLE WITH -LC, -GP, OR -FL)
- (NOT AVAILABLE WITH -120 & -150 POS)
- L: LATCHING (USE QSH-30-01-D-XX-A-L, SEE FIG 7, SHT 4) (MUST SELECT -A, NOT AVAILABLE WITH OTHER OPTIONS) (NOT AVAILABLE WITH -090, -120, & -150 POS)

SECTION "A"- "A"
SCALE 3 : 1

NOTES:

1. Ⓢ REPRESENTS A CRITICAL DIMENSION.
2. NOTE DELETED.
3. CONTACT RETENTION: 8 OZ. MINIMUM.
4. GROUND PLANE RETENTION: 8 OZ. MINIMUM.
5. NOTE DELETED.
6. NOTE DELETED.
7. DIMENSION APPLIES TO CONTACT & GROUND PLANE.
8. -L PLATING CAN BE SUBSTITUTED FOR -F PLATING.
9. SUB-SC-05-01-XX RETENTION TO BE 1.0 LBF IN BODY.
10. MAY SUB C-126-01 FOR C-126-21.
11. FOR NEW APPLICATIONS REQUIRING THESE POSITIONS, PLEASE CONTACT SAMTEC INTERCONNECT PROCESSING GROUP.
12. FOR -120, -150 POSITIONS USE C-269-11-X. DO NOT SUB C-126.
13. DUE TO THE HIGH AMOUNT OF INSERTION FORCE NEEDED, THE -LC OPTION IS NOT COMPATIBLE WITH AUTO PLACEMENT. SAMTEC RECOMMENDS MANUAL PLACEMENT FOR ALL ASSEMBLIES WITH THE -LC OPTION.
14. CHECK ONCE PER BANK ALTERNATING SIDES FOR MULTIPLE BANK PARTS.
15. SIDE WALLS ARE RIBBED AS NECESSARY TO CONTROL BOW.
16. ORDERS WILL BE PACKAGED ACCORDING TO THE SAMTEC PACKAGING EFFICIENCY STANDARDS (SPES) FOUND ON WWW.SAMTEC.COM.
17. NOTE DELETED.
18. ATTACH LABEL -4X2 TO EACH REEL.
19. TRAYS ARE STANDARD PACKAGING.
20. ANY CHANGES SHOULD ALSO BE APPLIED TO QSH, QSE, QSS, BSH, BSE, AND BSS.
21. DIMENSION MEASURED FROM A PLANE CREATED FROM THE SIGNAL PINS.
22. COPLANARITY INCLUDES SIGNAL PINS AND GROUND PLANES.

FIG 1
-A: ALIGNMENT PIN OPTION
(QSH-090-01-X-D-A SHOWN)UNLESS OTHERWISE SPECIFIED,
DIMENSIONS ARE IN INCHES.

TOLERANCES ARE:

DECIMALS ANGLES

.XX: ±.01[.3]

.XXX: ±.005[.13]

.XXXX: ±.0020[.051]

PROPRIETARY NOTE

THIS DOCUMENT CONTAINS CONFIDENTIAL AND PROPRIETARY INFORMATION AND ALL DESIGN, MANUFACTURING, REPRODUCTION, USE, PATENT RIGHTS AND SALES RIGHTS ARE EXPRESSLY RESERVED BY SAMTEC, INC. THIS DOCUMENT SHALL NOT BE DISCLOSED, IN WHOLE OR PART, TO ANY UNAUTHORIZED PERSON OR ENTITY NOR REPRODUCED, TRANSFERRED OR INCORPORATED IN ANY OTHER PROJECT IN ANY MANNER WITHOUT THE EXPRESS WRITTEN CONSENT OF SAMTEC, INC.

MATERIAL: DO NOT SCALE DRAWING

SHEET SCALE: 3:2

INSULATOR: LCP UL94V-0, COLOR: BLACK
CONTACT & GROUND PLANE: PHOS BRONZE

DESCRIPTION:

.5mm DOUBLE ROW HS SOCKET ASSEMBLY

DWG. NO.

QSH-XXX-01-X-D-XXX-X-XX

BY: DEAN P

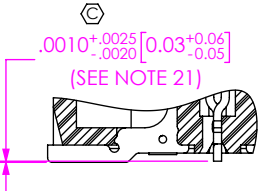
05/21/1999

SHEET 1 OF 4

samtec

520 PARK EAST BLVD, NEW ALBANY, IN 47150
PHONE: 812-944-6733 FAX: 812-948-5047
e-Mail info@SAMTEC.com code 55322

c:\enterprisevault\DWG\MISC\MKTG\QSH-XXX-01-X-D-XXX-X-XX-MKT.SLDDRW



DETAIL 'F'
SCALE 6 : 1

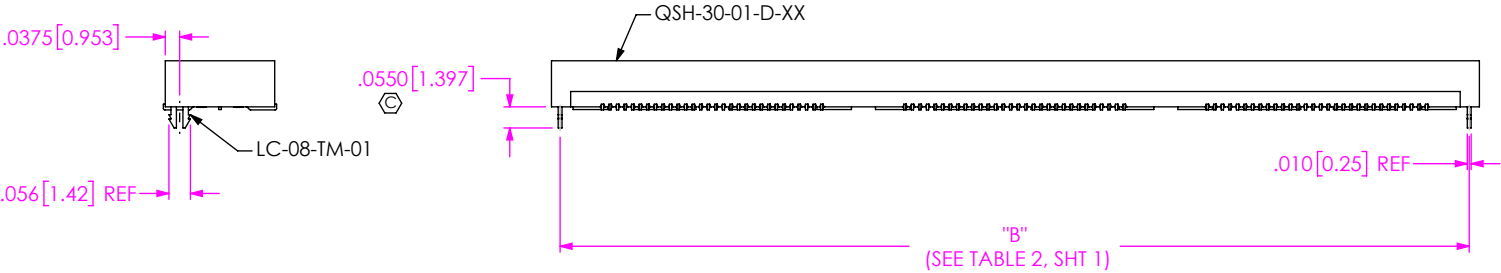


FIG 2
-LC: LOCKING CLIP OPTION
(QSH-090-01-X-D-LC SHOWN)
(SAME AS FIG 1, EXCEPT AS SHOWN)

TABLE 3								
No OF POS	"R"				"S"			
	-LC, -A, -FL	-GP	-RT1	-L	-LC, -A, -FL	-GP	-RT1	-L
-030	.839 [21.31]	1.216 [30.89]	1.438 [36.51]	1.048 [26.61]	.257 [6.53]	.446 [11.32]	.556 [14.13]	.361 [9.18]
-060	1.627 [41.31]	2.004 [50.89]	2.225 [56.52]	1.835 [46.61]	.651 [16.53]	.839 [21.32]	.950 [24.13]	.755 [19.18]
-090	2.417 [61.38]	2.791 [70.89]	3.013 [76.52]	2.623 [66.61]	1.046 [26.56]	1.233 [31.32]	1.344 [34.13]	1.149 [29.18]
-120	3.204 [81.38]	3.579 [90.89]	N/A	N/A	1.440 [36.56]	1.627 [41.32]	N/A	N/A
-150	3.991 [101.37]	4.366 [110.90]	N/A	N/A	1.833 [46.56]	2.021 [51.32]	N/A	N/A

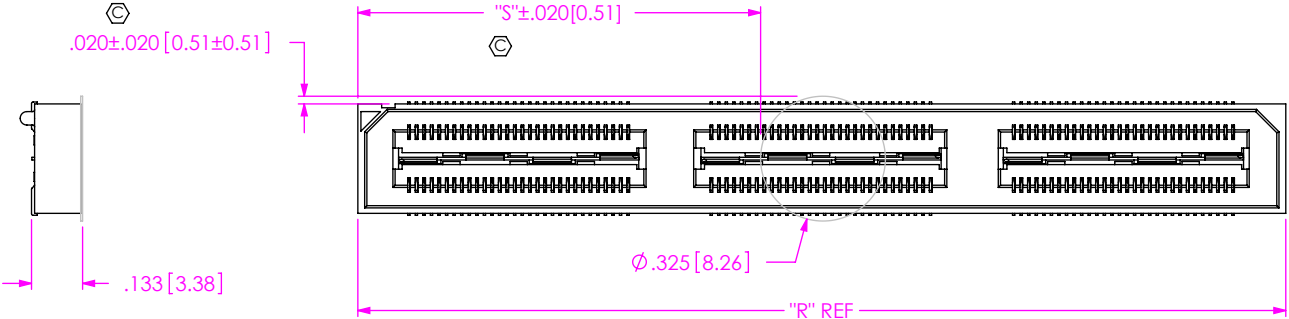


FIG 3
-K: POLYIMIDE FILM
(USE K-DOT-.325-.450-.005)

* PROPRIETARY NOTE THIS DOCUMENT CONTAINS CONFIDENTIAL AND PROPRIETARY INFORMATION AND ALL DESIGN, MANUFACTURING, REPRODUCTION, USE, PATENT RIGHTS AND SALES RIGHTS ARE EXPRESSLY RESERVED BY SAMTEC, INC. THIS DOCUMENT SHALL NOT BE DISCLOSED, IN WHOLE OR PART, TO ANY UNAUTHORIZED PERSON OR ENTITY NOR REPRODUCED, TRANSFERRED OR INCORPORATED IN ANY OTHER PROJECT IN ANY MANNER WITHOUT THE EXPRESS WRITTEN CONSENT OF SAMTEC, INC.		
	520 PARK EAST BLVD, NEW ALBANY, IN 47150 PHONE: 812-944-6733 FAX: 812-948-5047 e-Mail info@SAMTEC.com code 55322	
	DO NOT SCALE DRAWING	DESCRIPTION: .5mm DOUBLE ROW HS SOCKET ASSEMBLY
	SHEET SCALE: 2:1	DWG. NO. QSH-XXX-01-X-D-XXX-X-XX
BY: DEAN P 05/21/1999		SHEET 2 OF 4

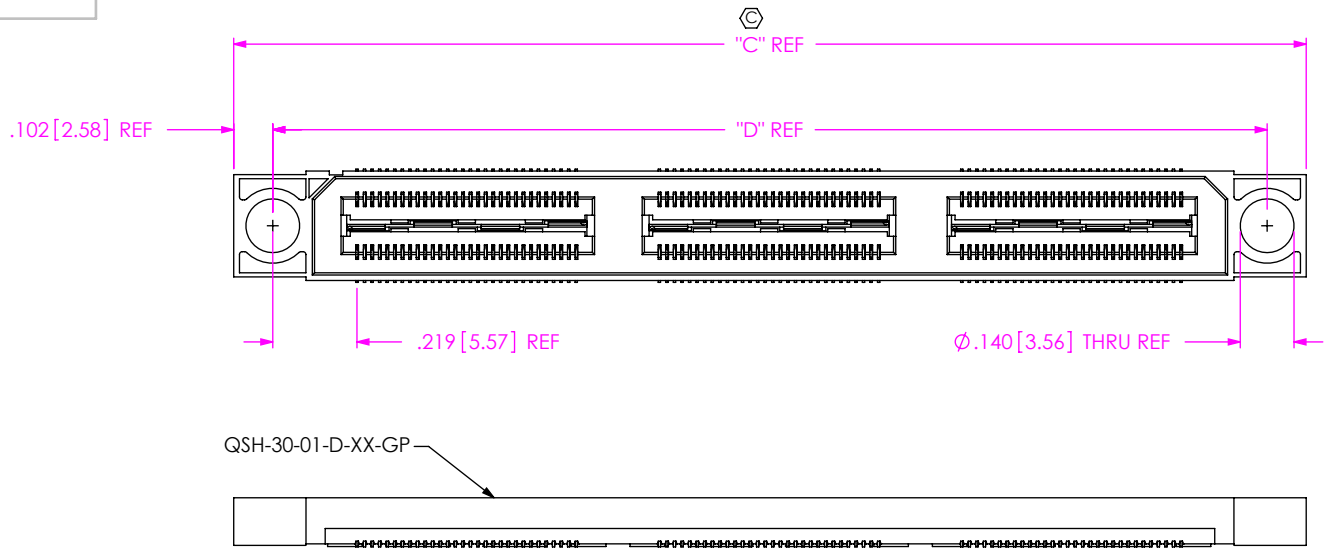


FIG 4
-GP: GUIDE POSTS
(QSH-090-01-X-D-GP SHOWN)
(SAME AS FIG 1, EXCEPT AS SHOWN)

TABLE 4		
POS	"C"	"D"
-030	1.216 [30.89]	1.013 [25.73]
-060	2.004 [50.89]	1.801 [45.73]
-090	2.791 [70.89]	2.588 [65.74]
-120	3.579 [90.89]	3.376 [85.74]
-150	4.366 [110.90]	4.163 [105.74]

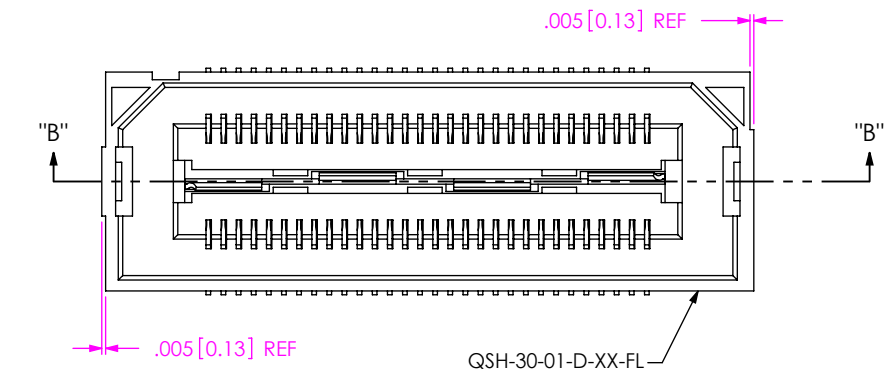
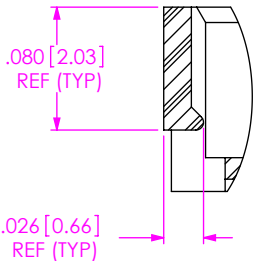
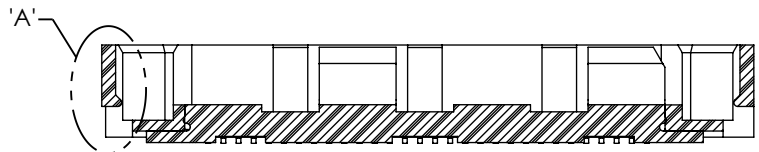



FIG 5
-FL: FRICTION LOCKS
(QSH-030-01-X-D-FL SHOWN)
(SAME AS FIG 1, EXCEPT AS SHOWN)



DETAIL 'A'
SCALE 8 : 1



SECTION "B"-"B"
SCALE 4 : 1

<p>PROPRIETARY NOTE</p> <p>THIS DOCUMENT CONTAINS CONFIDENTIAL AND PROPRIETARY INFORMATION AND ALL DESIGN, MANUFACTURING, REPRODUCTION, USE, PATENT RIGHTS AND SALES RIGHTS ARE EXPRESSLY RESERVED BY SAMTEC, INC. THIS DOCUMENT SHALL NOT BE DISCLOSED, IN WHOLE OR PART, TO ANY UNAUTHORIZED PERSON OR ENTITY NOR REPRODUCED, TRANSFERRED OR INCORPORATED IN ANY OTHER PROJECT IN ANY MANNER WITHOUT THE EXPRESS WRITTEN CONSENT OF SAMTEC, INC.</p>		 <p>520 PARK EAST BLVD, NEW ALBANY, IN 47150 PHONE: 812-944-6733 FAX: 812-948-5047 e-Mail info@SAMTEC.com code 55322</p>	
DO NOT SCALE DRAWING		DESCRIPTION: .5mm DOUBLE ROW HS SOCKET ASSEMBLY	
SHEET SCALE: 2:1		DWG. NO. QSH-XXX-01-X-D-XXX-X-XX	
BY: DEAN P		05/21/1999	SHEET 3 OF 4

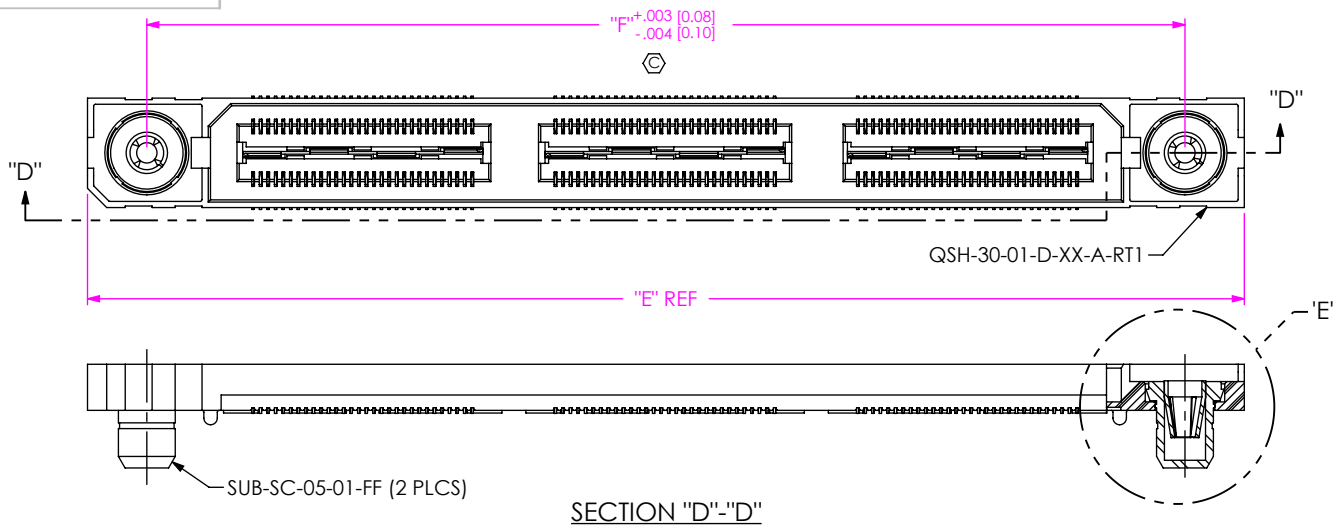


TABLE 5		
POS	"E"	"F"
-030	1.438 [36.51]	1.129 [28.66]
-060	2.225 [56.52]	1.916 [48.67]
-090	3.013 [76.52]	2.704 [68.67]
-120	N/A	N/A
-150	N/A	N/A

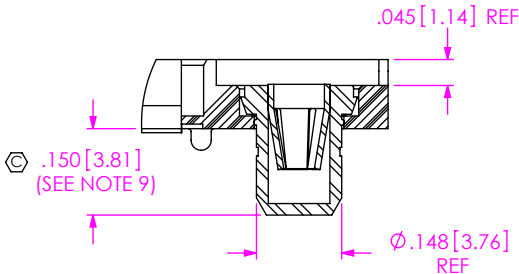


FIG 6
-RT1: RETENTION OPTION
(QSH-090-01-X-D-A-RT1 SHOWN)
(SAME AS FIG 1, EXCEPT AS SHOWN)

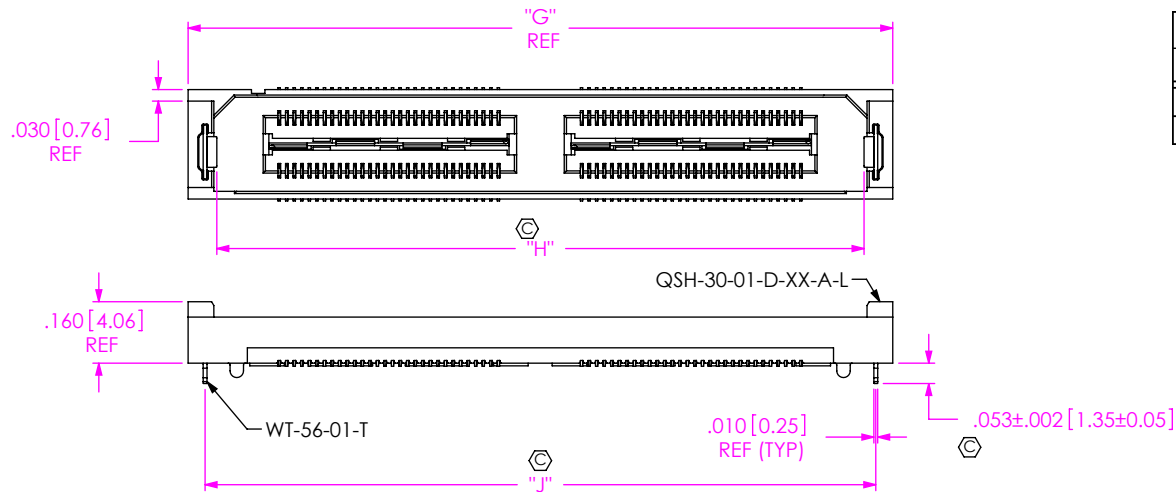


TABLE 6			
POS	"G"	"H"	"J"
-030	1.048 [26.61]	.897 [22.78]	.959 [24.36]
-060	1.835 [46.61]	1.684 [42.78]	1.747 [44.36]

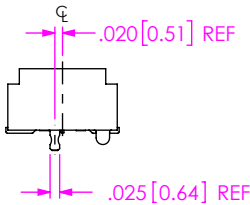


FIG 7
-L: LATCHING OPTION
(QSH-060-01-X-D-A-L SHOWN)
(SAME AS FIG 1, EXCEPT AS SHOWN)

PROPRIETARY NOTE

THIS DOCUMENT CONTAINS CONFIDENTIAL AND PROPRIETARY INFORMATION AND ALL DESIGN, MANUFACTURING, REPRODUCTION, USE, PATENT RIGHTS AND SALES RIGHTS ARE EXPRESSLY RESERVED BY SAMTEC, INC. THIS DOCUMENT SHALL NOT BE DISCLOSED, IN WHOLE OR PART, TO ANY UNAUTHORIZED PERSON OR ENTITY NOR REPRODUCED, TRANSFERRED OR INCORPORATED IN ANY OTHER PROJECT IN ANY MANNER WITHOUT THE EXPRESS WRITTEN CONSENT OF SAMTEC, INC.

520 PARK EAST BLVD, NEW ALBANY, IN 47150
PHONE: 812-944-6733 FAX: 812-948-5047
e-Mail info@SAMTEC.com code 55322

DO NOT SCALE DRAWING

SHEET SCALE: 2:1

DESCRIPTION:
.5mm DOUBLE ROW HS SOCKET ASSEMBLY

DWG. NO.
QSH-XXX-01-X-D-XXX-X-XX

BY: DEAN P 05/21/1999 SHEET 4 OF 4