

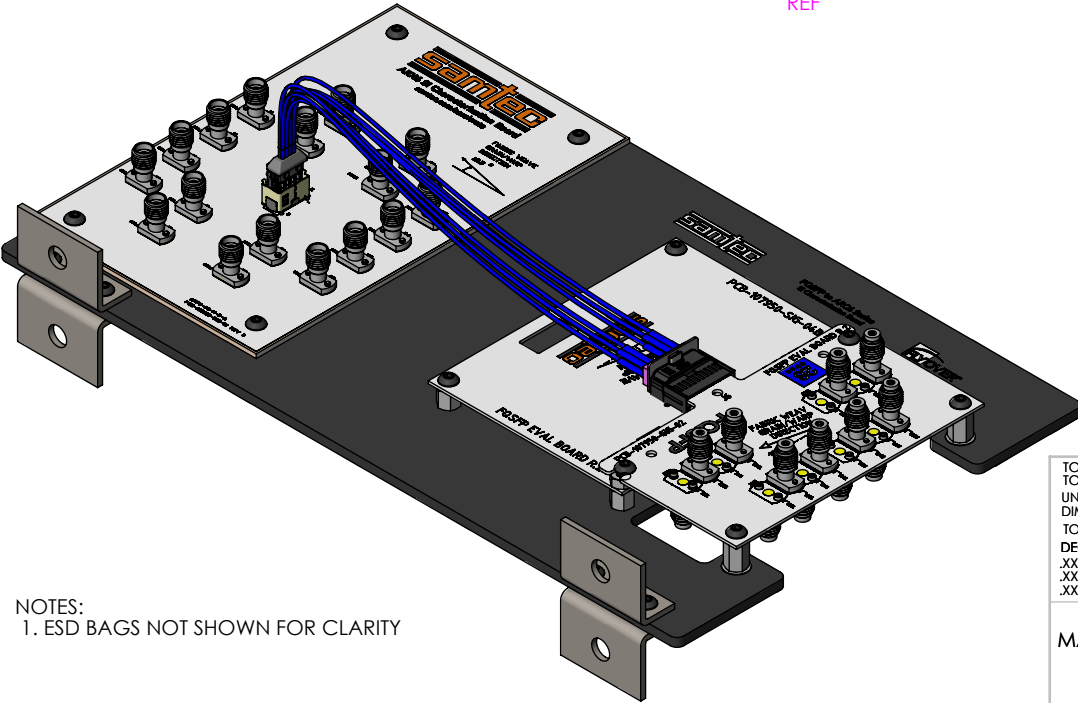
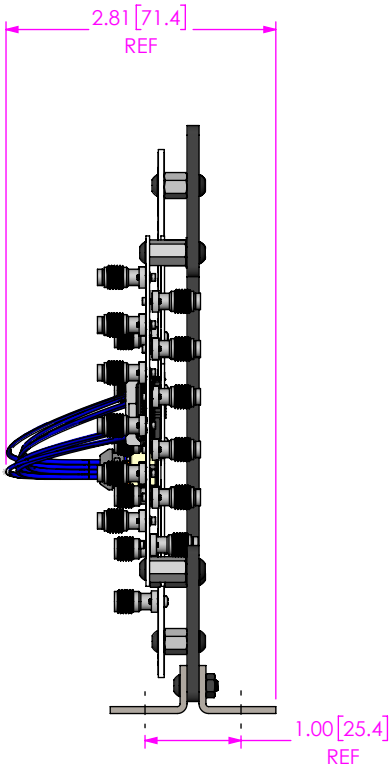
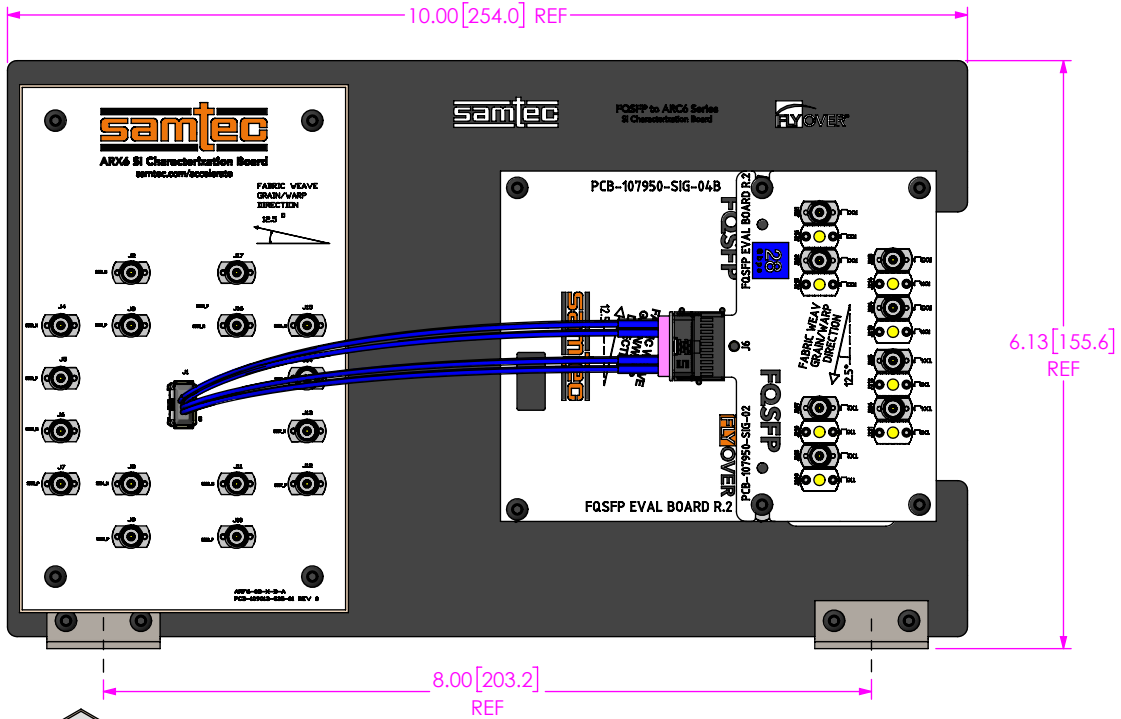


ESD SENSITIVE

REF-205303-X.XX-XX

**SMA STYLE**  
-0.00: NO SMA'S  
\*-1.85: 1.85mm SMA'S  
-2.40: 2.40mm SMA'S  
-2.92: 2.92mm SMA'S

**CABLE LENGTH (INCHES)**  
-01: 08.0  
\*-02: 10.0  
\*-03: 12.0  
\*-04: 18.0  
\*-05: 20.0  
\*-06: 40.0  
\* = NOT TOOLED



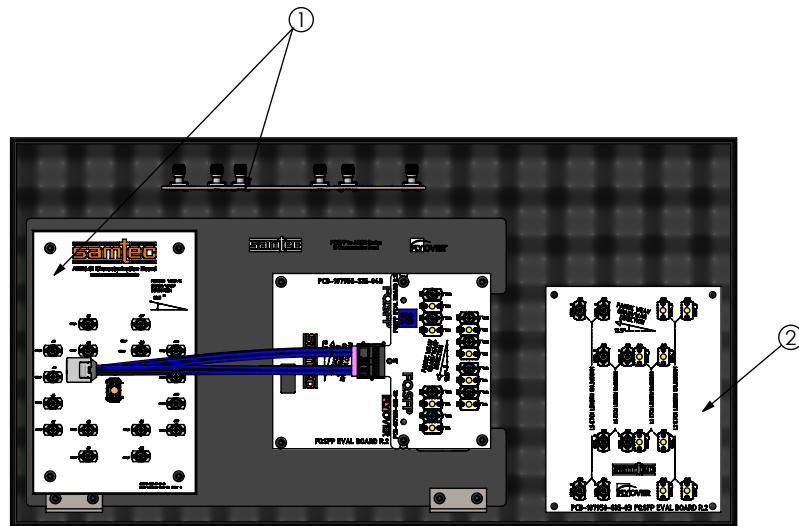
NOTES:  
1. ESD BAGS NOT SHOWN FOR CLARITY

TOLERANCES DO NOT APPLY TO REFERENCE DIMENSIONS. UNLESS OTHERWISE SPECIFIED, DIMENSIONS ARE IN INCHES. TOLERANCES ARE:  
DECIMALS .XX: ±.01 [3]  
.XXX: ±.005 [13]  
.XXXX: ±.0020 [051]

**PROPRIETARY NOTE**  
THIS DOCUMENT CONTAINS CONFIDENTIAL AND PROPRIETARY INFORMATION AND ALL DESIGN, MANUFACTURING, REPRODUCTION, USE, PATENT RIGHTS AND SALES RIGHTS ARE EXPRESSLY RESERVED BY SAMTEC, INC. THIS DOCUMENT SHALL NOT BE DISCLOSED, IN WHOLE OR PART, TO ANY UNAUTHORIZED PERSON OR ENTITY NOR REPRODUCED, TRANSFERRED OR INCORPORATED IN ANY OTHER PROJECT IN ANY MANNER WITHOUT THE EXPRESS WRITTEN CONSENT OF SAMTEC, INC.

MATERIAL:	DO NOT SCALE DRAWING	SHEET SCALE: 1:2	DESCRIPTION: FQSP TO ARX6 EVALUATION KIT
			DWG. NO. REF-205303-X.XX-XX
			BY: JAMES BA. 10/04/2018 SHEET 1 OF 3

# PACKAGING VIEW



<p><b>PROPRIETARY NOTE</b></p> <p>THIS DOCUMENT CONTAINS CONFIDENTIAL AND PROPRIETARY INFORMATION AND ALL DESIGN, MANUFACTURING, REPRODUCTION, USE, PATENT RIGHTS AND SALES RIGHTS ARE EXPRESSLY RESERVED BY SAMTEC, INC. THIS DOCUMENT SHALL NOT BE DISCLOSED, IN WHOLE OR PART, TO ANY UNAUTHORIZED PERSON OR ENTITY NOR REPRODUCED, TRANSFERRED OR INCORPORATED IN ANY OTHER PROJECT IN ANY MANNER WITHOUT THE EXPRESS WRITTEN CONSENT OF SAMTEC, INC.</p>	<p><b>samtec</b></p> <p>520 PARK EAST BLVD, NEW ALBANY, IN 47150  PHONE: 812-944-6733 FAX: 812-948-5047  e-Mail: info@SAMTEC.com code 55322</p>
<p>DO NOT SCALE DRAWING</p>	<p>DESCRIPTION:  FQSFP TO ARX6 EVALUATION KIT</p>
<p>SHEET SCALE: 1:4</p>	<p>DWG. NO.  REF-205303-X.XX-XX</p>
	<p>BY: JAMES BA. 10/04/2018 SHEET 2 OF 3</p>

BOM TABLE				
ITEM	PART NUMBER	QTY	COST QTY	DESCRIPTION
1	SEE TABLE A	1	1	FQSFP TO ARC6 EVALUATION KIT
2	SEE TABLE B	1	1	FQSFP CALIBRATION BOARD
3	FP-FMC004	1	1	BOX
4	S-FMC010	1	1	SLEEVE
5	LABEL-MAIL-1IN-CLR	2	2	LABEL

TABLE A		
SMA STYLE	CABLE LENGTH	PART NUMBER
-0.00	-01	SUB-REF-205303-0.00-01
	-02	SUB-REF-205303-0.00-02
	-03	SUB-REF-205303-0.00-03
	-04	SUB-REF-205303-0.00-04
	-05	SUB-REF-205303-0.00-05
	-06	SUB-REF-205303-0.00-06
*-1.85	-01	SUB-REF-205303-1.85-01
	-02	SUB-REF-205303-1.85-02
	-03	SUB-REF-205303-1.85-03
	-04	SUB-REF-205303-1.85-04
	-05	SUB-REF-205303-1.85-05
	-06	SUB-REF-205303-1.85-06
-2.40	-01	SUB-REF-205303-2.40-01
	-02	SUB-REF-205303-2.40-02
	-03	SUB-REF-205303-2.40-03
	-04	SUB-REF-205303-2.40-04
	-05	SUB-REF-205303-2.40-05
	-06	SUB-REF-205303-2.40-06
-2.92	-01	SUB-REF-205303-2.92-01
	-02	SUB-REF-205303-2.92-02
	-03	SUB-REF-205303-2.92-03
	-04	SUB-REF-205303-2.92-04
	-05	SUB-REF-205303-2.92-05
	-06	SUB-REF-205303-2.92-06

TABLE B	
SMA STYLE	PART NUMBER
-0.00	PCBA-200113-0.00-04
*-1.85	PCBA-200113-1.85-04
-2.40	PCBA-200113-2.40-04
-2.92	PCBA-200113-2.92-04

SIGNAL MAPPING				
FQSFP			ARX6	
REF DES	CONNECTOR PIN	MSA DEF	CONNECTOR PIN	REF DES
J208	2	TX2n	22	J8
J207	3	TX2p	24	J9
J206	5	TX4n	10	J4
J205	6	TX4p	12	J5
J204	14	RX3p	15	J13
J203	15	RX3n	17	J12
J202	17	RX1p	3	J17
J201	18	RX1n	5	J16
J216	21	RX2n	9	J15
J215	22	RX2p	11	J14
J214	24	RX4n	21	J11
J213	25	RX4p	23	J10
J212	33	TX3p	4	J2
J211	34	TX3n	6	J3
J210	36	TX1p	16	J6
J209	37	TX1n	18	J7

\* PROPRIETARY NOTE \*  
 THIS DOCUMENT CONTAINS CONFIDENTIAL AND PROPRIETARY INFORMATION AND ALL DESIGN, MANUFACTURING, REPRODUCTION, USE, PATENT RIGHTS AND SALES RIGHTS ARE EXPRESSLY RESERVED BY SAMTEC, INC. THIS DOCUMENT SHALL NOT BE DISCLOSED, IN WHOLE OR PART, TO ANY UNAUTHORIZED PERSON OR ENTITY NOR REPRODUCED, TRANSFERRED OR INCORPORATED IN ANY OTHER PROJECT IN ANY MANNER WITHOUT THE EXPRESS WRITTEN CONSENT OF SAMTEC, INC.

DO NOT SCALE DRAWING

SHEET SCALE: 1:2

**samtec**

520 PARK EAST BLVD, NEW ALBANY, IN 47150  
 PHONE: 812-944-6733 FAX: 812-948-5047  
 e-Mail info@SAMTEC.com code 55322

DESCRIPTION:  
FQSFP TO ARX6 EVALUATION KIT

DWG. NO.  
REF-205303-X.XX-XX

BY: JAMES BA. 10/04/2018 SHEET 3 OF 3