

**DESIGNED & DIMENSIONED  
IN MILLIMETERS [INCHES]**

**SEM-X-1XX-XX-XX.X-XX-D-XX-X-XX**

TABLE 1	
BODY OPTION	"A"
BLANK	(No OF POS x 0.800[.0315]) + 4.500[.1772]
L	(No OF POS x 0.800[.0315]) + 4.500[.1772]
S	(No OF POS x 0.800[.0315]) + 1.600[.0630]

**BODY OPTION**  
 (LEAVE BLANK IF OPTION NOT USED, USE SEM)  
 L: FRICTION LOCK (USE SEML)  
 S: SLIM (USE SEMS)  
 (NOT AVAILABLE WITH -A, -LC, OR -WT)  
 (ONLY AVAILABLE WITH -K-TR)

**PACKAGING**  
 BLANK: TRAYS (SEE NOTE 4)  
 -TR: TAPE & REEL  
 (SEE NOTE 10 & 11)  
 -FR: FULL REEL QTY TAPE & REEL  
 (SEE NOTE 10 & 11)

**PICK & PLACE PAD**  
 -K: POLYIMIDE FILM  
 (USE K-DOT-.138-.250-.005,  
 SEE FIG 5, SHT 2)

**OPTION**  
 -A: ALIGNMENT PIN (SEE FIG 2, SHEET 2)  
 (NOT AVAILABLE WITH -LC OR -WT)  
 (NOT AVAILABLE ON SEML OR SEMS)  
 -LC: LOCKING CLIP (SEE FIG 3, SHEET 2  
 & NOTE 9)  
 (NOT AVAILABLE WITH -A OR -WT)  
 (NOT AVAILABLE ON SEML OR SEMS)  
 -WT: WELD TAB (SEE FIG 4, SHEET 2)  
 (NOT AVAILABLE WITH -A OR -LC)  
 (STANDARD ON SEML)  
 (NOT AVAILABLE ON SEMS)

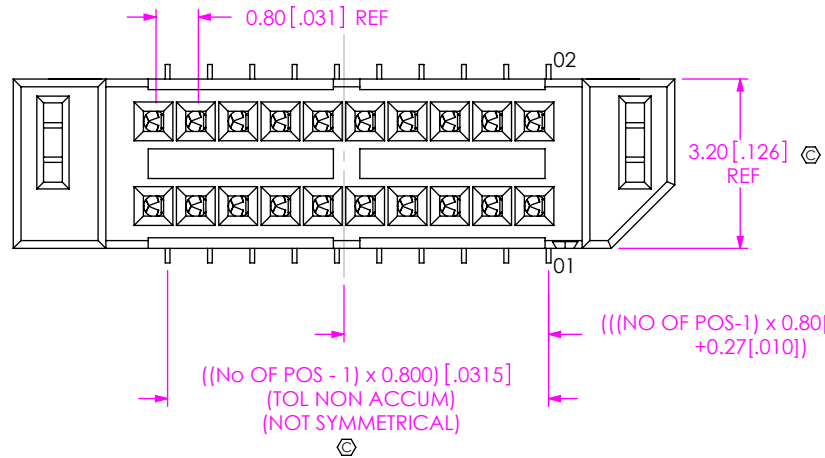
**ROW SPECIFICATION**  
 -D: DOUBLE ROW

**No OF POSITIONS**  
 -05 THRU -50 (PER ROW)  
 (IN 5 POS INCREMENTS)

**LEAD STYLE**  
 -02: SURFACE MOUNT

**STACK HEIGHT**  
 -03.0: 3 MM

**PLATING SPECIFICATION**  
 -H: 30µ" HEAVY GOLD IN CONTACT AREA,  
 3µ" GOLD ON TAIL  
 -G: 10µ" GOLD IN CONTACT AREA,  
 3µ" GOLD ON TAIL  
 -FG: 3µ" FLASH GOLD ON ENTIRE  
 TERMINAL



DO NOT  
SCALE FROM  
THIS PRINT

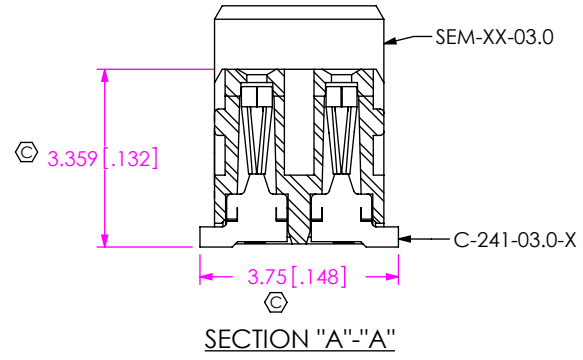
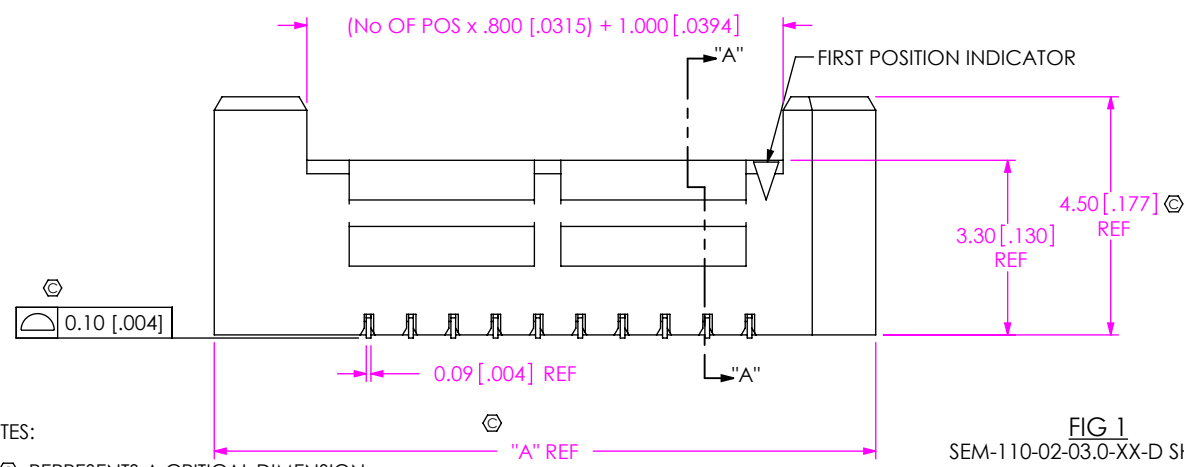


FIG 1  
SEM-110-02-03.0-XX-D SHOWN

- NOTES:
- ⊗ REPRESENTS A CRITICAL DIMENSION.
  - MINIMUM PUSHOUT FORCE FOR CONTACT, LOCKING CLIP AND WELD TAB: 2.22N.
  - HEIGHT VARIATION BETWEEN ANY TWO CONTACTS: 0.13 MAXIMUM.
  - PARTS TO BE PACKAGED IN TRAYS UNLESS OTHERWISE SPECIFIED.
  - POSITIONS -05 THRU -20 WILL HAVE ONLY ONE FRICTION LOCK.  
POSITIONS -25 THRU -40 WILL HAVE TWO FRICTION LOCKS.  
POSITIONS -45 THRU -50 WILL HAVE THREE FRICTION LOCKS.
  - NOTE DELETED.
  - NOTE DELETED.
  - NOTE DELETED.
  - NOTE DELETED.
  - DUE TO HIGH AMOUNT OF INSERTION FORCE NEEDED, THE -LC OPTION IS NOT COMPATIBLE WITH AUTO-PLACEMENT. SAMTEC RECOMMENDS MANUAL PLACEMENT FOR ALL ASSEMBLIES WITH THE -LC OPTION.
  - ORDERS WILL BE PACKAGED ACCORDING TO THE SAMTEC PACKAGING EFFICIENCY STANDARDS (SPES) FOUND ON WWW.SAMTEC.COM
  - ATTACH LABEL TO EACH REEL

UNLESS OTHERWISE SPECIFIED,  
DIMENSIONS ARE IN MILLIMETERS.  
TOLERANCES ARE:  
DECIMALS ANGLES  
X.X: ±0.3 [.01] 2°  
X.XX: ±0.13 [.005]  
X.XXX: ±0.051 [.0020]

**MATERIAL:** DO NOT SCALE DRAWING  
 INSULATOR: VECTRA E130I  
 CONTACT: #25 BeCu, HALF HARD  
 LOCKING CLIP: PHOS BRONZE 510  
 WELD TAB: BRASS ALLOW 260, FULL HARD

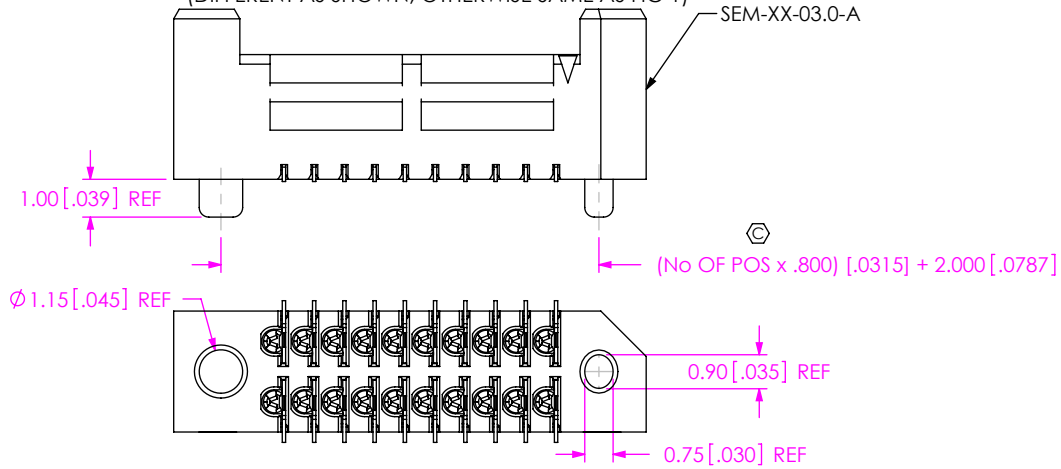
SHEET SCALE: 7:1



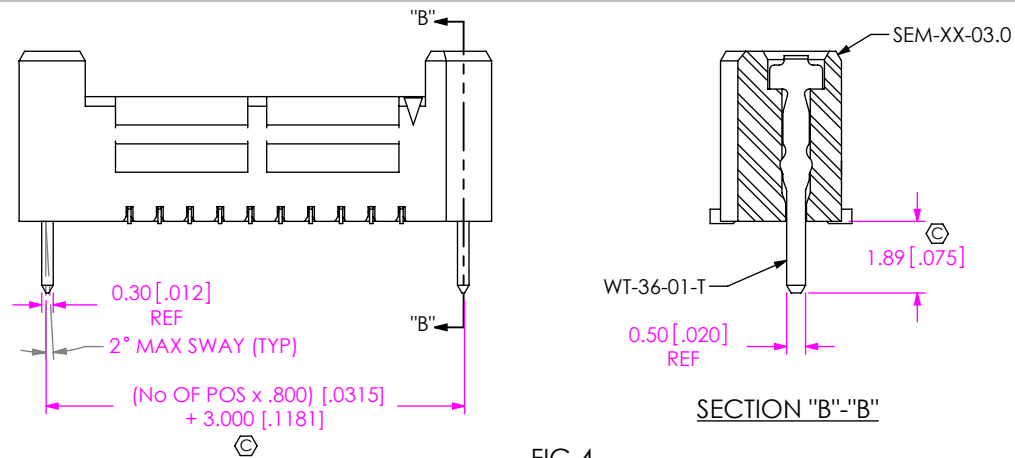
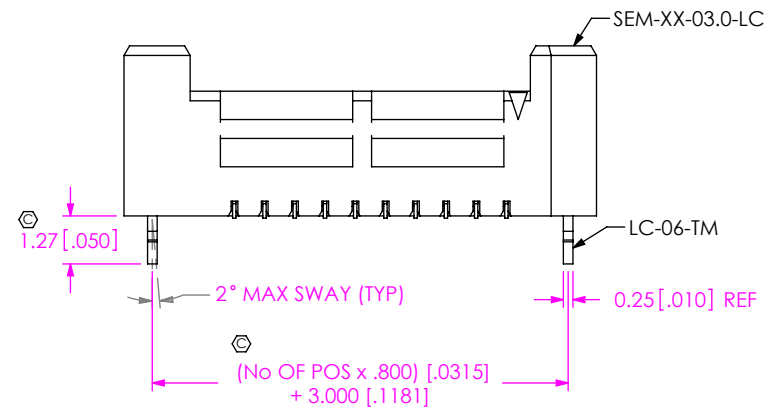
520 PARK EAST BLVD, NEW ALBANY, IN 47150  
 PHONE: 812-944-6733 FAX: 812-948-5047  
 e-Mail info@SAMTEC.com code 55322

DESCRIPTION:  
 .8MM TIGER EYE MICRO SOCKET  
 DWG. NO.  
**SEM-X-1XX-XX-XX.X-XX-D-XX-X-XX**  
 BY: B RAY 10-19-2007 SHEET 1 OF 2

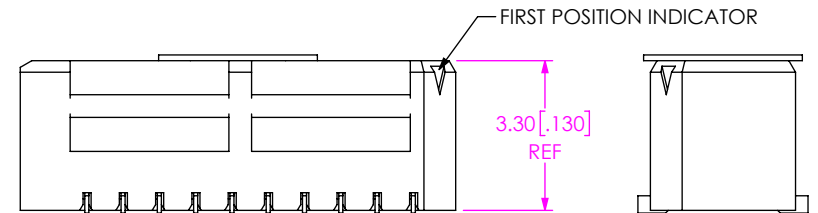
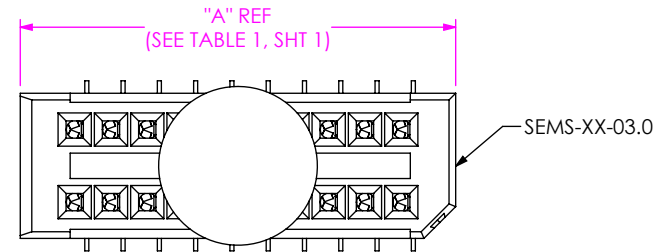
**FIG 2**  
SEM-110-02-03.0-XX-D-A SHOWN  
(DIFFERENT AS SHOWN, OTHERWISE SAME AS FIG 1)



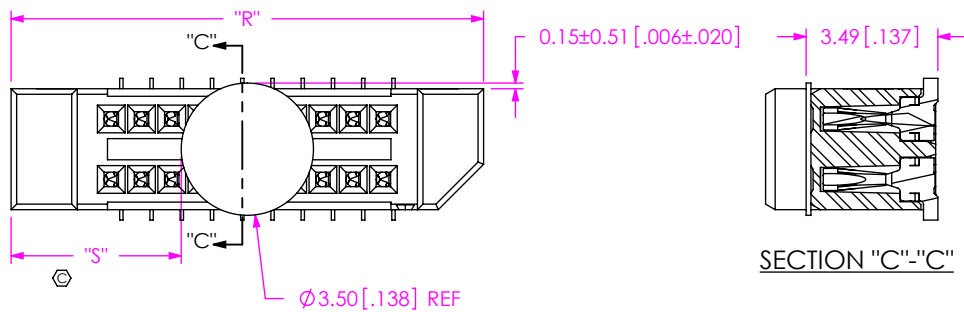
**FIG 3**  
SEM-110-02-03.0-XX-D-LC SHOWN  
(DIFFERENT AS SHOWN, OTHERWISE SAME AS FIG 1)



**FIG 4**  
SEM-110-02-03.0-XX-D-WT SHOWN  
(DIFFERENT AS SHOWN, OTHERWISE SAME AS FIG 1)



**FIG 6**  
SEMS-110-02-03.0-XX-D SHOWN  
(DIFFERENT AS SHOWN, OTHERWISE SAME AS FIG 1)



NOTE: "R" = OVERALL LENGTH (REF)  
"S" = {"R" - 3.51 [.138]}/2 [.0787] ± 0.51 [.02]

**FIG 5**  
SEM-110-02-03.0-XX-D-K SHOWN  
(DIFFERENT AS SHOWN, OTHERWISE SAME AS FIG 1)

DO NOT SCALE DRAWING  
SHEET SCALE: 5:1



520 PARK EAST BLVD, NEW ALBANY, IN 47150  
PHONE: 812-944-6733 FAX: 812-948-5047  
e-Mail info@SAMTEC.com code 55322

DESCRIPTION:  
.8MM TIGER EYE MICRO SOCKET

DWG. NO.  
**SEM-X-1XX-XX-XX.X-XX-D-XX-X-XX**

BY: B RAY 10-19-2007 SHEET 2 OF 2