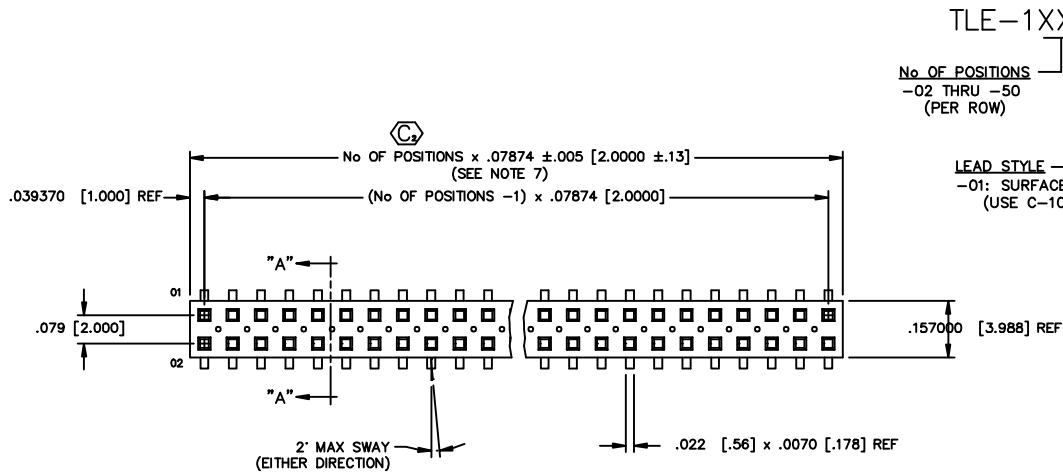


REV. Y

| | | | | | |
|--------------------------|--------------------------|-----------------------------|-----------------------------|------------------------------------|---------------------------|
| DIMENSIONS ARE IN INCHES | | UNLESS OTHERWISE NOTED | TOLERANCES ARE: | TITLE: DUAL ROW 2mm x 2mm ASSEMBLY | DWG NO: TLE-1XX-XX-X-DV-X |
| ONE PLACE DECIMALS ± .1 | TWO PLACE DECIMALS ± .01 | THREE PLACE DECIMALS ± .005 | FOUR PLACE DECIMALS ± .0020 | ANGLES ± 2° | SHEET 1 OF 2 |



TLE-1XX-XX-X-DV-X

No OF POSITIONS
-02 THRU -50 (PER ROW)

LEAD STYLE
-01: SURFACE MOUNT (USE C-101-01-X)

OPTION
-A: ALIGNMENT PIN (SEE FIG 2 & 3, SHT. 2) (USE TLE-XX-D-XX) (MOLDED TO POSITION OR STAKED) (SAMTEC DISCRETION WHICH -A PIN IS USED) (MOLDED 3 POSITION MIN. SEE FIG 2, SHT 2.) (STAKED 4 POSITION MIN. SEE FIG 3, SHT 2)
-P: PICK & PLACE PAD OPTION (SEE FIG 4, SHT 2) (USE LMP-03) (4 POS. MIN.)
-TR: TAPE AND REEL OPTION (AVAILABLE FOR 02 THROUGH 37 POSITIONS ONLY)
-K: POLYAMIDE FILM PAD (3 POS MIN) (.005 [.13] THICKNESS WITH SILICONE ADHESIVE) (SEE FIGURE 5, SHEET 2)

BODY SPECIFICATION
-G: 10μ" GOLD ON ENTIRE CONTACT

PLATING SPECIFICATION
-G: 10μ" GOLD ON ENTIRE CONTACT

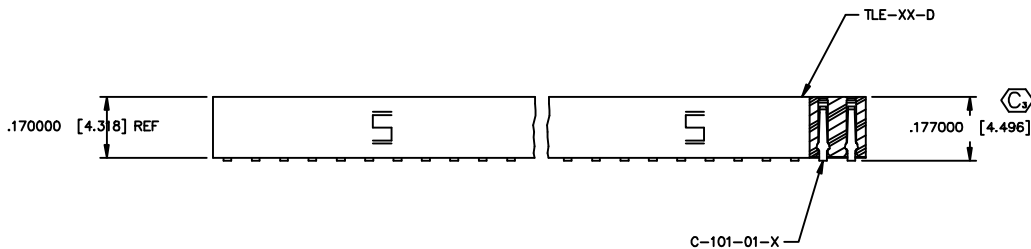
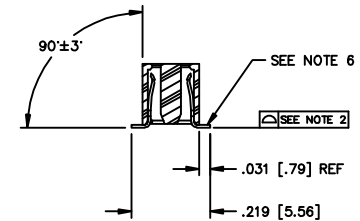


FIG. 1



SECT. "A-A"

NOTES:

1. MINIMUM PUSHOUT FORCE: .4 lb.
2. COPLANARITY; POS -02 THRU -26: .004
POS -27 THRU -50: .006
3. Ⓢ REPRESENTS A CRITICAL DIMENSION
4. ALL POSITIONS TO BE PACKAGED IN TUBES.
5. FOR EVERY FINISHED PART, ONE POSITION WILL BE LOST WHEN CUTTING BODY TO LENGTH.
6. BURR ALLOWANCE: .003 [.08] MAX
7. CUT FLASH TO BE .010 [.25] MAX WITH NO FLASH ALLOWED IN HOLES OR EXTENDING BELOW LEADS.

PATENT NUMBERS
5713755 / 5961339

DO NOT SCALE FROM THIS PRINT.

PROPRIETARY NOTE
THIS DOCUMENT CONTAINS INFORMATION CONFIDENTIAL AND PROPRIETARY TO SAMTEC INC. AND SHALL NOT BE REPRODUCED OR TRANSMITTED TO OTHER DOCUMENTS OR DISCLOSED TO OTHERS OR USED FOR ANY PURPOSE OTHER THAN THAT FOR WHICH IT WAS OBTAINED WITHOUT THE EXPRESS WRITTEN CONSENT OF SAMTEC INC.

MATERIAL:
BODY:
VECTRA E1301
COLOR: BLACK
TERMINAL:
PHOSPHER BRONZE

samtec

520 PARK EAST BLVD. NEW ALBANY, INDIANA 47150
PHONE (812) 944-6733 P.O. BOX 1147
CODE 55322

MADE BY: D PURVIS 01-20-97

TLE-1XX-XX-X-DV-X
SHEET 1 OF 2

PLOT SCALE 1=2