

REV CN

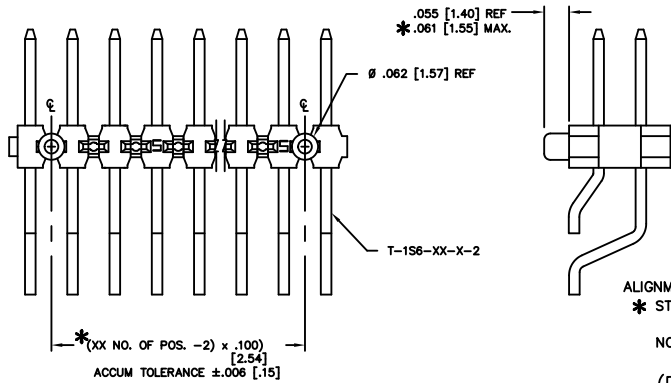
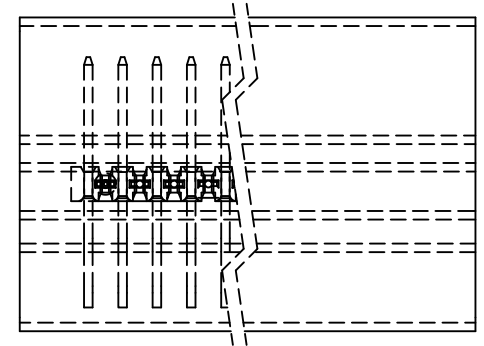
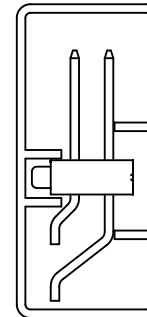


FIG 2

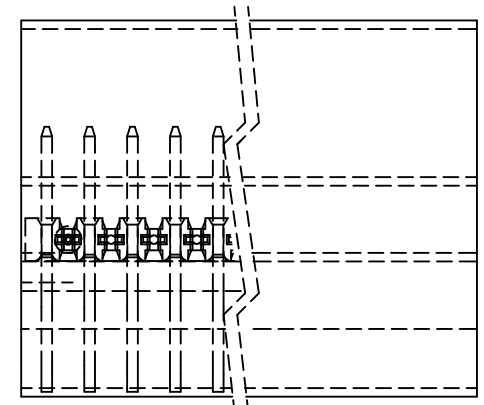
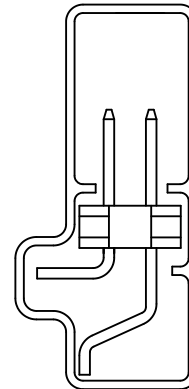
-A: ALIGNMENT PIN
ALIGNMENT PINS APPEAR ON -A OPTION ONLY.
* STAKED: USE (2) SM-A10H AND TSM-50-DHU
(CAN BE CUT TO POSITION)
NOT STAKED: USE TSM-XX-DHU-XX
(CAN BE CUT TO POSITION)
(DIFFERENT AS SHOWN, OTHERWISE
SAME AS FIG 1)

DIMENSIONS ARE IN INCHES		UNLESS OTHERWISE NOTED	TOLERANCES ARE:	TITLE: TERMINAL STRIP DOUBLE SURFACE MOUNT	DWG NO: TSM-1XX-XX-XXX-XX-XX-XXX-XX SHEET 3 OF 3
ONE PLACE DECIMALS ± .1 [3]	TWO PLACE DECIMALS ± .01 [.3]	THREE PLACE DECIMALS ± .005 [.13]	FOUR PLACE DECIMALS ± .0020 [.051]	ANGLES ± 2°	

PACKAGE AS SHOWN
SCALE .75



TUBE: PT-TSM001-DH
PLUG: TP-09



-MT OPTION
TUBE: PT-TSM005-DH-MT
PLUG: TP-07

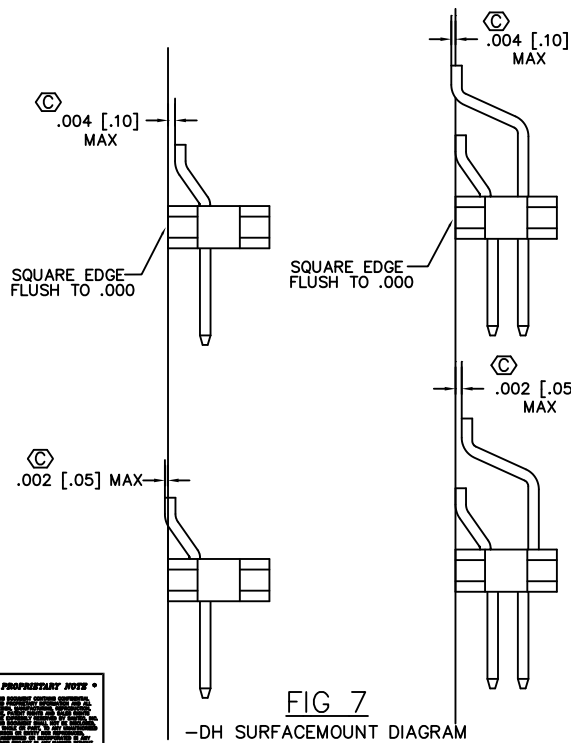


FIG 7

-DH SURFACEMOUNT DIAGRAM

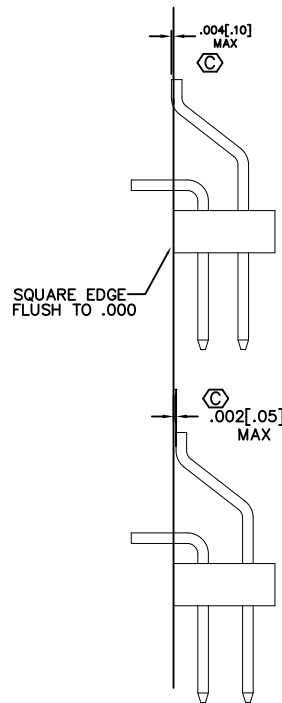


FIG 8

-MT SURFACEMOUNT DIAGRAM

• PROPRIETARY NOTE •
SMT-1XX-XX-XXX-XX-XX-XXX-XX
SHEET 3 OF 3

MISC\MKGT
TSM-1XX-XX-XXX-XX-XX-XXX-XX

samtec

520 PARK EAST BLVD. NEW ALBANY, INDIANA 47150
PHONE (812) 944-8733 P.O. BOX 1147
CODE 55322

MADE BY: BRATCHER 7-27-95 TSM-1XX-XX-XXX-XX-XX-XXX-XX
SHEET 3 OF 3