

Multiple XLH Connector Applications

The majority of Samtec’s board-to-board connectors are capable of being used in applications where multiple connectors are placed on a single board and mated simultaneously. However, due to the interlocking features of XLH (SLH or TLH), maintaining proper linear and angular alignment during mating and unmating is essential to minimize the potential for connector damage. As a result, Samtec recommends against the use of multiple XLH connectors, mated simultaneously, per board.

Recommended

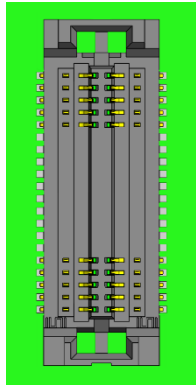


Figure 1

Not Recommended

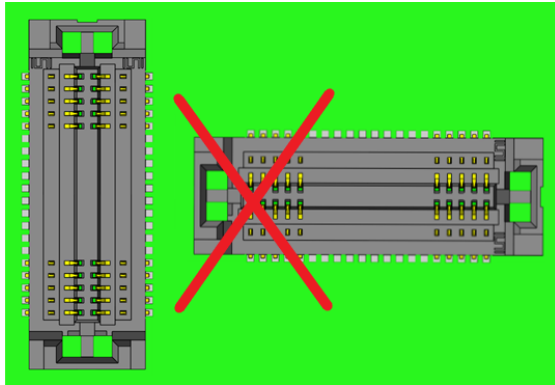


Figure 2

Not Recommended

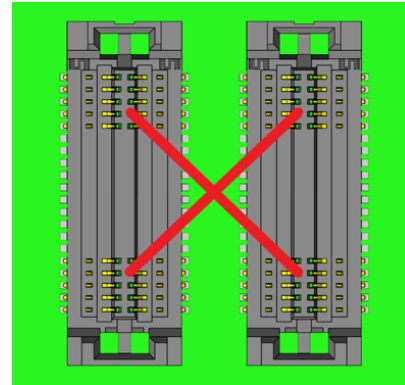


Figure 3

Not Recommended

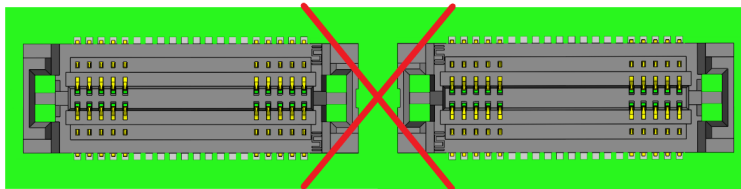


Figure 4

XLH cannot be rigidly misaligned in the X- or Y-directions. To avoid connector damage or malfunction, they are not recommended for applications in which multiple XLH’s are simultaneously mated. Also, the XLH connectors must be mated and unmated axially only, as zippering angles may damage connector and/or solder joints. These specifications can be found in the [SLH/TLH](#) product specification sheet.

For more information, please contact the Samtec Interconnect Processing Group at IPG@Samtec.com.