

**Samtec**  
520 Park East Blvd.  
New Albany, IN 47151  
United States

"This report supersedes all previous documents bearing the test report number 4330299-CH06."

The following sample(s) was/were submitted and identified by/on behalf of the client as:

**Black Molded Polymer**  
**Model/Part No.: Celanex 3316**  
**Country of Destination: USA**

Sample Received Date: **6/28/2018**

Testing Period: **6/29/2018 – 7/20/2018**

Revision Summary : Results updated.

Test Requested : Please refer to the result summary.

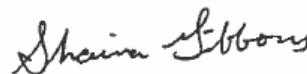
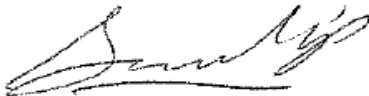
Test Method & Results : Please refer to next page(s).

Result Summary :

Test Requested	Comment
1. RoHS Directive 2011/65/EU Annex II	PASS
2. Directive (EU) 2015/863 of amending RoHS Directive 2011/65/EU	PASS
3. Halogen Content (Cl, Br, I, F) of the submitted sample(s) with reference to BS EN 14582:2016	See Test Results
4. Total Phosphorous Content (as requested by Client)	See Test Results

Signed for and on behalf of SGS North America, Inc.

Prepared By:



Sandip Ramolia  
Senior Analytical Chemist, Chemistry Laboratory

Shaina Gibbons  
Report Writer, Chemistry Laboratory

"This document is issued by the Company subject to its General Conditions of Service printed overleaf, available on request or accessible at <http://www.sgs.com/en/Terms-and-Conditions.aspx> and, for electronic format documents, subject to Terms and Conditions for Electronic Documents at <http://www.sgs.com/en/Terms-and-Conditions/Terms-e-Document.aspx>. Attention is drawn to the limitation of liability, indemnification and jurisdiction issues defined therein. Any holder of this document is advised that information contained hereon reflects the Company's findings at the time of its intervention only and within the limits of Client's instructions, if any. The Company's sole responsibility is to its Client and this document does not exonerate parties to a transaction from exercising all their rights and obligations under the transaction documents. This document cannot be reproduced except in full, without prior written approval of the Company. Any unauthorized alteration, forgery or falsification of the content or appearance of this document is unlawful and offenders may be prosecuted to the fullest extent of the law. Unless otherwise stated the results shown in this test report refer only to the sample(s) tested and such sample(s) are retained for 45 days only."

**1. RoHS Directive 2011/65/EU Annex II**

Test Item(s):	Unit	Test Method	Results	MDL	Limit
			1		
Cadmium(Cd)	mg/kg	With reference to IEC 62321-5:2013 (Determination of Cd and Pb by ICP-OES and /or ICP-MS)	ND	2	100
Lead (Pb)	mg/kg		21.1	2	1000
Mercury (Hg)	mg/kg	With reference to IEC 62321-4:2013 (Determination of Hg by ICP-OES and/ or ICP-MS)	ND	2	1000
Hexavalent Chromium (CrVI)	mg/kg	With reference to IEC 62321; EPA 3060A (Determination of CrVI by UV-VIS)	ND*	2	1000
<b>Sum of PBBs</b>	mg/kg	With reference to IEC 62321-6:2015 (Determination of PBB and PBDE by GC-MS)	ND	-	1000
Monobromobiphenyl	mg/kg		ND	5	-
Dibromobiphenyl	mg/kg		ND	5	-
Tribromobiphenyl	mg/kg		ND	5	-
Tetrabromobiphenyl	mg/kg		ND	5	-
Hexabromobiphenyl	mg/kg		ND	5	-
Pentabromobiphenyl	mg/kg		ND	5	-
Heptabromobiphenyl	mg/kg		ND	5	-
Octabromobiphenyl	mg/kg		ND	5	-
Nonabromobiphenyl	mg/kg		ND	5	-
Decabromobiphenyl	mg/kg		ND	5	-
<b>Sum of PBDEs</b>	mg/kg		ND	-	1000
Monobromodiphenyl ether	mg/kg		ND	5	-
Dibromodiphenyl ether	mg/kg		ND	5	-
Tribromodiphenyl ether	mg/kg		ND	5	-
Tetrabromodiphenyl ether	mg/kg		ND	5	-
Pentabromodiphenyl ether	mg/kg		ND	5	-
Hexabromodiphenyl ether	mg/kg		ND	5	-
Heptabromodiphenyl ether	mg/kg		ND	5	-
Octabromodiphenyl ether	mg/kg		ND	5	-
Nonabromodiphenyl ether	mg/kg	ND	5	-	
Decabromodiphenyl ether	mg/kg	ND	5	-	
<b>Conclusion</b>	/	/	PASS	/	/

**Sample Description:**

1. Black Molded Polymer - Model No.: Celanex 3316

"This document is issued by the Company subject to its General Conditions of Service printed overleaf, available on request or accessible at <http://www.sgs.com/en/Terms-and-Conditions.aspx> and, for electronic format documents, subject to Terms and Conditions for Electronic Documents at <http://www.sgs.com/en/Terms-and-Conditions/Terms-e-Document.aspx>. Attention is drawn to the limitation of liability, indemnification and jurisdiction issues defined therein. Any holder of this document is advised that information contained hereon reflects the Company's findings at the time of its intervention only and within the limits of Client's instructions, if any. The Company's sole responsibility is to its Client and this document does not exonerate parties to a transaction from exercising all their rights and obligations under the transaction documents. This document cannot be reproduced except in full, without prior written approval of the Company. Any unauthorized alteration, forgery or falsification of the content or appearance of this document is unlawful and offenders may be prosecuted to the fullest extent of the law. Unless otherwise stated the results shown in this test report refer only to the sample(s) tested and such sample(s) are retained for 45 days only."

## Note :

- (a) mg/kg = ppm ; 0.1wt% = 1000ppm
- (b) ND= not detected
- (c) MDL = Method Detection Limit
- (d) - = not regulated
- (e) \* = Total Chromium analysis by ICP-MS and/or ICP-OES was not detected in submitted sample. Therefore, Hexavalent Chromium determination using UV-Visible Spectroscopy was not performed.
- (f) IEC 62321 series is equivalent to EN 62321 series  
[http://www.cenelec.eu/dyn/www/f?p=104:30:1742232870351101:::FSP\\_ORG\\_ID,FSP\\_LANG\\_ID:1258637,25](http://www.cenelec.eu/dyn/www/f?p=104:30:1742232870351101:::FSP_ORG_ID,FSP_LANG_ID:1258637,25)

*"This document is issued by the Company subject to its General Conditions of Service printed overleaf, available on request or accessible at <http://www.sgs.com/en/Terms-and-Conditions.aspx> and, for electronic format documents, subject to Terms and Conditions for Electronic Documents at <http://www.sgs.com/en/Terms-and-Conditions/Terms-e-Document.aspx>. Attention is drawn to the limitation of liability, indemnification and jurisdiction issues defined therein. Any holder of this document is advised that information contained hereon reflects the Company's findings at the time of its intervention only and within the limits of Client's instructions, if any. The Company's sole responsibility is to its Client and this document does not exonerate parties to a transaction from exercising all their rights and obligations under the transaction documents. This document cannot be reproduced except in full, without prior written approval of the Company. Any unauthorized alteration, forgery or falsification of the content or appearance of this document is unlawful and offenders may be prosecuted to the fullest extent of the law. Unless otherwise stated the results shown in this test report refer only to the sample(s) tested and such sample(s) are retained for 45 days only."*

**2. Directive (EU) 2015/863 of amending RoHS Directive 2011/65/EU**

Test Item(s):	Unit	Test Method	Results	MDL	Limit
			1		
Bis (2-ethylhexyl) Phthalate (DEHP)	mg/kg	IEC 62321-8:2017 (Determination of DEHP, BBP, DBP and DIBP by GC-MS)	ND	50	1000
Butyl benzyl Phthalate (BBP)	mg/kg		ND	50	1000
Dibutyl Phthalate (DBP)	mg/kg		ND	50	1000
Diisobutyl Phthalate (DIBP)	mg/kg		ND	50	1000
<b>Conclusion</b>	/	/	PASS	/	/

Sample Description:

1. Black Molded Polymer - Model No.: Celanex 3316

## Note :

- (a) mg/kg = ppm ; 0.1wt% = 1000ppm
- (b) ND= not detected
- (c) MDL = Method Detection Limit
- (d) - = not regulated
- (e) IEC 62321 series is equivalent to EN 62321 series

[http://www.cenelec.eu/dyn/www/f?p=104:30:1742232870351101:::FSP\\_ORG\\_ID,FSP\\_LANG\\_ID:1258637,25](http://www.cenelec.eu/dyn/www/f?p=104:30:1742232870351101:::FSP_ORG_ID,FSP_LANG_ID:1258637,25)

*"This document is issued by the Company subject to its General Conditions of Service printed overleaf, available on request or accessible at <http://www.sgs.com/en/Terms-and-Conditions.aspx> and, for electronic format documents, subject to Terms and Conditions for Electronic Documents at <http://www.sgs.com/en/Terms-and-Conditions/Terms-e-Document.aspx>. Attention is drawn to the limitation of liability, indemnification and jurisdiction issues defined therein. Any holder of this document is advised that information contained hereon reflects the Company's findings at the time of its intervention only and within the limits of Client's instructions, if any. The Company's sole responsibility is to its Client and this document does not exonerate parties to a transaction from exercising all their rights and obligations under the transaction documents. This document cannot be reproduced except in full, without prior written approval of the Company. Any unauthorized alteration, forgery or falsification of the content or appearance of this document is unlawful and offenders may be prosecuted to the fullest extent of the law. Unless otherwise stated the results shown in this test report refer only to the sample(s) tested and such sample(s) are retained for 45 days only."*

**3. Halogen Content (Cl, Br, I, F) of the submitted sample(s) with reference to BS EN 14582:2016:**

With reference to **BS EN 14582:2016** "Characterization of waste – Halogen and sulfur content – Oxygen Combustion in closed systems and determination methods". Analysis was performed by Ion Chromatography.

Test Items	Unit	Method Detection Limit	1
Halogen – <b>Chlorine</b> (Cl) CAS # 007782-50-5	mg/kg	50	<b>58.3</b>
Halogen – <b>Bromine</b> (Br) CAS # 007726-95-6	mg/kg	50	<b>64200</b>
Halogen – <b>Fluorine</b> (F) CAS # 007782-41-4	mg/kg	50	<b>1820</b>
Halogen – <b>Iodine</b> (I) CAS # 007553-56-2	mg/kg	50	<b>ND</b>

Sample Description:

1. Black Molded Polymer - Model No.: Celanex 3316

Note: 1. mg/kg = ppm

2. ND = Not Detected, reported when the reading is less than the detection limit value.

*"This document is issued by the Company subject to its General Conditions of Service printed overleaf, available on request or accessible at <http://www.sgs.com/en/Terms-and-Conditions.aspx> and, for electronic format documents, subject to Terms and Conditions for Electronic Documents at <http://www.sgs.com/en/Terms-and-Conditions/Terms-e-Document.aspx>. Attention is drawn to the limitation of liability, indemnification and jurisdiction issues defined therein. Any holder of this document is advised that information contained hereon reflects the Company's findings at the time of its intervention only and within the limits of Client's instructions, if any. The Company's sole responsibility is to its Client and this document does not exonerate parties to a transaction from exercising all their rights and obligations under the transaction documents. This document cannot be reproduced except in full, without prior written approval of the Company. Any unauthorized alteration, forgery or falsification of the content or appearance of this document is unlawful and offenders may be prosecuted to the fullest extent of the law. Unless otherwise stated the results shown in this test report refer only to the sample(s) tested and such sample(s) are retained for 45 days only."*

**4. Total Phosphorous Content (as requested by Client)**

Method: EPA 3050B/EPA 3052 followed by analysis using Inductively Coupled Argon Plasma Spectrometry.

Test Item	Result (mg/kg)	Detection Limit (mg/kg)
	1	
Phosphorous (P)	121	20

Sample Description:

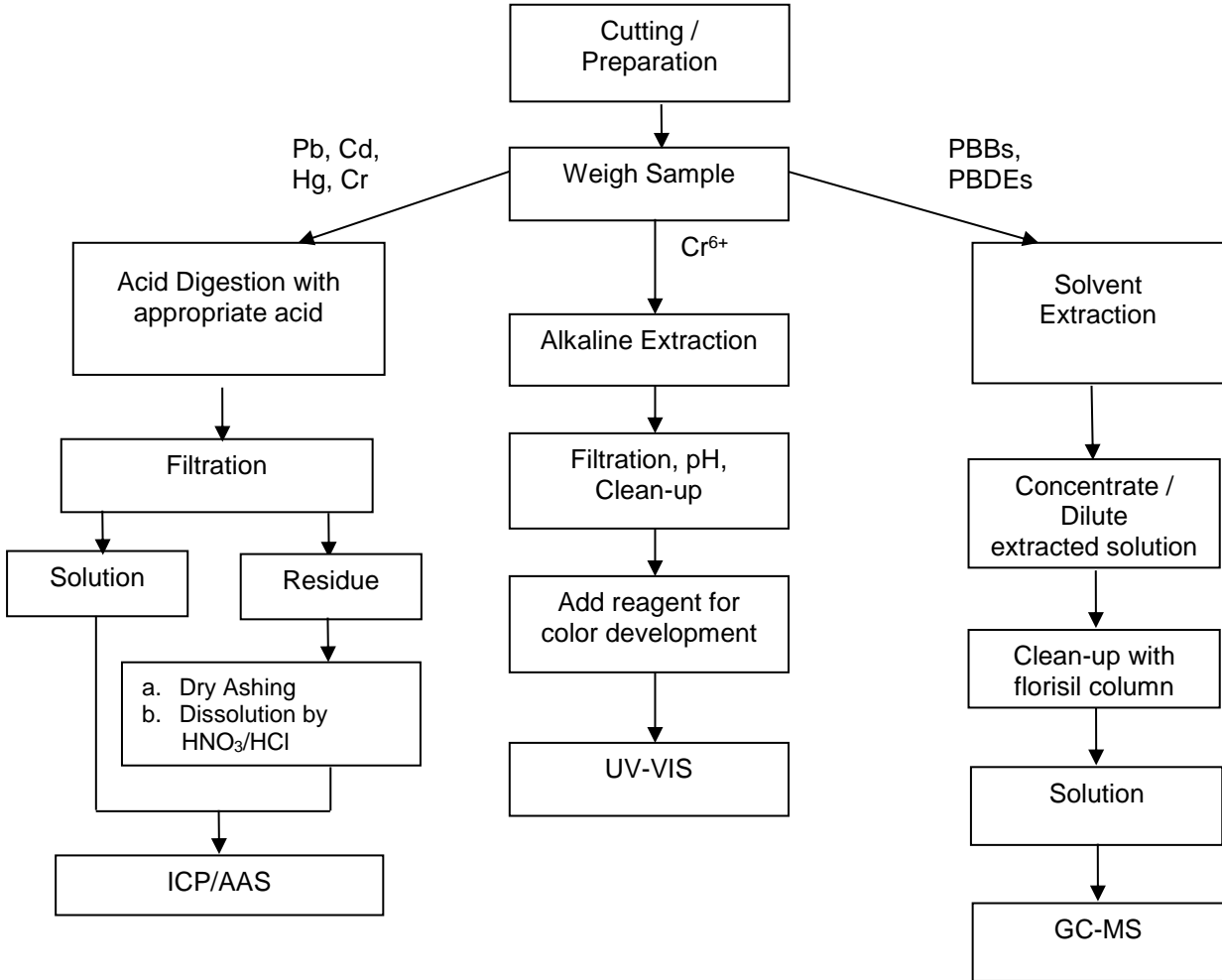
1. Black Molded Polymer - Model No.: Celanex 3316

Note :

1. ND = Not Detected = denoted less than reporting limit
2. 1 mg/kg = 1 ppm

*"This document is issued by the Company subject to its General Conditions of Service printed overleaf, available on request or accessible at <http://www.sgs.com/en/Terms-and-Conditions.aspx> and, for electronic format documents, subject to Terms and Conditions for Electronic Documents at <http://www.sgs.com/en/Terms-and-Conditions/Terms-e-Document.aspx>. Attention is drawn to the limitation of liability, indemnification and jurisdiction issues defined therein. Any holder of this document is advised that information contained hereon reflects the Company's findings at the time of its intervention only and within the limits of Client's instructions, if any. The Company's sole responsibility is to its Client and this document does not exonerate parties to a transaction from exercising all their rights and obligations under the transaction documents. This document cannot be reproduced except in full, without prior written approval of the Company. Any unauthorized alteration, forgery or falsification of the content or appearance of this document is unlawful and offenders may be prosecuted to the fullest extent of the law. Unless otherwise stated the results shown in this test report refer only to the sample(s) tested and such sample(s) are retained for 45 days only."*

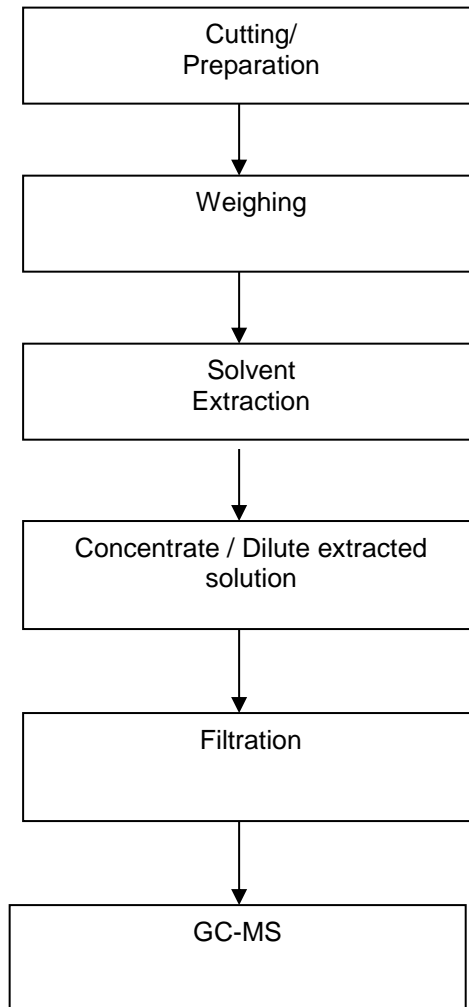
**Flowchart for RoHS Testing:**



- Note : 1. Cr<sup>6+</sup> is performed only when total Cr is detected  
 2. The Cr, Cd, Pb and Hg contents test on polymeric samples were dissolved totally by pre-conditioning method according to above flow chart.

*"This document is issued by the Company subject to its General Conditions of Service printed overleaf, available on request or accessible at <http://www.sgs.com/en/Terms-and-Conditions.aspx> and, for electronic format documents, subject to Terms and Conditions for Electronic Documents at <http://www.sgs.com/en/Terms-and-Conditions/Terms-e-Document.aspx>. Attention is drawn to the limitation of liability, indemnification and jurisdiction issues defined therein. Any holder of this document is advised that information contained hereon reflects the Company's findings at the time of its intervention only and within the limits of Client's instructions, if any. The Company's sole responsibility is to its Client and this document does not exonerate parties to a transaction from exercising all their rights and obligations under the transaction documents. This document cannot be reproduced except in full, without prior written approval of the Company. Any unauthorized alteration, forgery or falsification of the content or appearance of this document is unlawful and offenders may be prosecuted to the fullest extent of the law. Unless otherwise stated the results shown in this test report refer only to the sample(s) tested and such sample(s) are retained for 45 days only."*

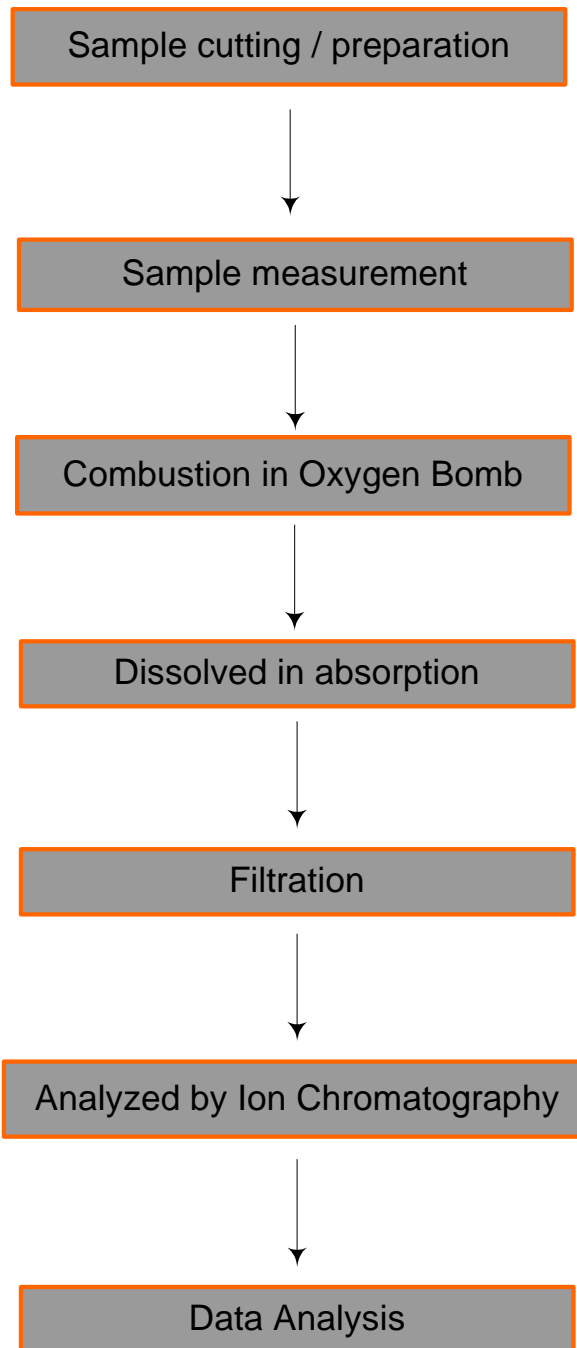
### Flowchart for Phthalates



*"This document is issued by the Company subject to its General Conditions of Service printed overleaf, available on request or accessible at <http://www.sgs.com/en/Terms-and-Conditions.aspx> and, for electronic format documents, subject to Terms and Conditions for Electronic Documents at <http://www.sgs.com/en/Terms-and-Conditions/Terms-e-Document.aspx>. Attention is drawn to the limitation of liability, indemnification and jurisdiction issues defined therein. Any holder of this document is advised that information contained hereon reflects the Company's findings at the time of its intervention only and within the limits of Client's instructions, if any. The Company's sole responsibility is to its Client and this document does not exonerate parties to a transaction from exercising all their rights and obligations under the transaction documents. This document cannot be reproduced except in full, without prior written approval of the Company. Any unauthorized alteration, forgery or falsification of the content or appearance of this document is unlawful and offenders may be prosecuted to the fullest extent of the law. Unless otherwise stated the results shown in this test report refer only to the sample(s) tested and such sample(s) are retained for 45 days only."*



Halogen Testing Flow Chart



*"This document is issued by the Company subject to its General Conditions of Service printed overleaf, available on request or accessible at <http://www.sgs.com/en/Terms-and-Conditions.aspx> and, for electronic format documents, subject to Terms and Conditions for Electronic Documents at <http://www.sgs.com/en/Terms-and-Conditions/Terms-e-Document.aspx>. Attention is drawn to the limitation of liability, indemnification and jurisdiction issues defined therein. Any holder of this document is advised that information contained hereon reflects the Company's findings at the time of its intervention only and within the limits of Client's instructions, if any. The Company's sole responsibility is to its Client and this document does not exonerate parties to a transaction from exercising all their rights and obligations under the transaction documents. This document cannot be reproduced except in full, without prior written approval of the Company. Any unauthorized alteration, forgery or falsification of the content or appearance of this document is unlawful and offenders may be prosecuted to the fullest extent of the law. Unless otherwise stated the results shown in this test report refer only to the sample(s) tested and such sample(s) are retained for 45 days only."*

**Sample Photo(s):**

SGS authenticates the photo(s) on the original report only

\*\*\* End of Report \*\*\*

*"This document is issued by the Company subject to its General Conditions of Service printed overleaf, available on request or accessible at <http://www.sgs.com/en/Terms-and-Conditions.aspx> and, for electronic format documents, subject to Terms and Conditions for Electronic Documents at <http://www.sgs.com/en/Terms-and-Conditions/Terms-e-Document.aspx>. Attention is drawn to the limitation of liability, indemnification and jurisdiction issues defined therein. Any holder of this document is advised that information contained hereon reflects the Company's findings at the time of its intervention only and within the limits of Client's instructions, if any. The Company's sole responsibility is to its Client and this document does not exonerate parties to a transaction from exercising all their rights and obligations under the transaction documents. This document cannot be reproduced except in full, without prior written approval of the Company. Any unauthorized alteration, forgery or falsification of the content or appearance of this document is unlawful and offenders may be prosecuted to the fullest extent of the law. Unless otherwise stated the results shown in this test report refer only to the sample(s) tested and such sample(s) are retained for 45 days only."*