

1.00 mm TO 110 GHz

1.00 mm Cable Assemblies RF047-A



SERIES	END 1 CONNECTOR	END 2 CONNECTOR	OVERALL LENGTH
--------	-----------------	-----------------	----------------

RF047-A
= (1.2 mm) .047" overshield DIA
29 AWG millimeter wave cable

-10BJ
= 1.00 mm Bulkhead Straight Jack

-10SP
= 1.00 mm Straight Plug

-"XXXX"
= Overall Length in millimeters
-0100 (100 mm) 3.94" minimum

ALSO AVAILABLE

1.35 mm, 1.85 mm, 2.40 mm, 2.92 mm,
SMPM, SMP, SMP3, SMA = RF047-A

VSWR

1.40 max. (DC to 90 GHz)
1.50 max. (90 GHz to 110 GHz)

1.00 mm Board Connectors 100

Cable Mates:
RF047-A, LL110, LL095



100	GENDER	TYPE	PLATING	ORIENTATION	TERMINATION	OPTION	PACKAGING
-----	--------	------	---------	-------------	-------------	--------	-----------

-J
= Jack

-P
= PCB Mount

-VP
= 50 μ"
(1.27 μm)
Gold center contact,
Passivated outer body

-ST
= Straight

-CMM
= Compression Mount Microstrip

-1
= Without Screws
(-CMM only)

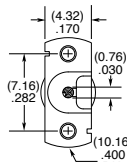
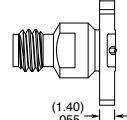
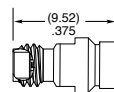
Leave blank for Individually bagged

-2
= With Screws
(.016" to .125" PCB thickness)
(-CMM only)

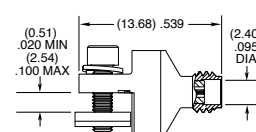
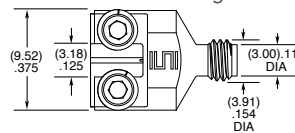
-B
= Bulk packaged

-3
= With Screws
(.069" to .178" PCB thickness)
(-CMM only)

-01
= .040" to .100"
PCB thickness
(-EL only)



-CMM SHOWN



-EL SHOWN

1.00 mm Cable Connectors PRF10



CONNECTORS FOR INDUSTRY STANDARD CABLES

PRF10-J-C-VP-047D-SS	.047 Semi-Rigid
PRF10-P-C-VP-047D-SS	.047 Semi-Rigid

For a complete list of 1.00 mm cable connectors, visit www.samtec.com?PRF10

J-C = Cable Jack

P-C = Cable Plug

VP = Plating (75 μ" Gold center contact, passivated outer contact)

SS = Straight, Solder Clamp

INTERFACE STANDARD

