

2.92 mm TO 40 GHz

2.92 mm Cable Assemblies

RF047-A, RF086, RF085, RF23C



VSWR

RF047-A: 1.35 max.
RF086: 1.40 max.
RF085: 1.40 max.
RF23C: 1.40 max.

SERIES	END 1 CONNECTOR	END 2 CONNECTOR	OVERALL LENGTH
RF047-A = (1.2 mm) .047" overshield DIA 29 AWG millimeter wave cable	-92SJ = 2.92 mm Straight Jack		-"XXXX" = Overall Length in millimeters -0100 (100 mm) 3.94" minimum (RF047-A, RF085, RF086) -0152 (152 mm) 5.984" minimum (RF23C)
RF086 = (2.18 mm) .086" overshield DIA 23 AWG millimeter wave cable	-92SP = 2.92 mm Straight Plug		
RF085 = (2.16 mm) .085" overshield DIA 24 AWG millimeter wave cable			
RF23C = MWC-2350CU-01 millimeter wave cable with copper foil shield			
ALSO AVAILABLE			
1.00 mm, 1.35 mm, 1.85 mm, 2.40 mm, SMPM, SMP, SMA = RF047-A			
1.85 mm, 2.40 mm, SMPM, SMP, SMA = RF086			
2.40 mm = RF085			
2.40 mm, SMPM, SMP, SMA = RF23C			

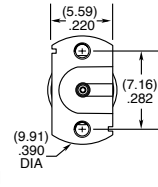
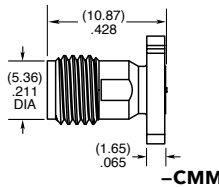
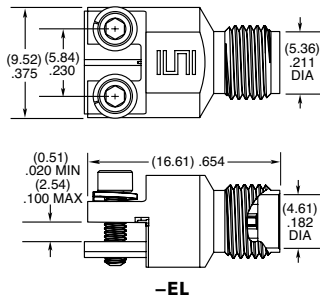
2.92 mm Board Connectors

292

Cable Mates:
RF047-A, RF085,
RF086, RF23C



292	GENDER	TYPE	PLATING	ORIENTATION	TERMINATION	OPTION	PACKAGING
	-J = Jack	-P = PCB Mount	-EP = 50 μ" (1.27 μm) Gold center contact, Passivated outer contact	-ST = Straight	-CM = Compression Mount Stripline -CMM = Compression Mount Microstrip	-1 = Without Screws (-CM & -CMM only) -2 = With Screws (-CM & -CMM only) -01 = .040" to .100" PCB thickness (-EL only)	Leave blank for individually bagged. -B = Bulk packaged
					-EL = Edge Launch		



2.92 mm Cable Connectors

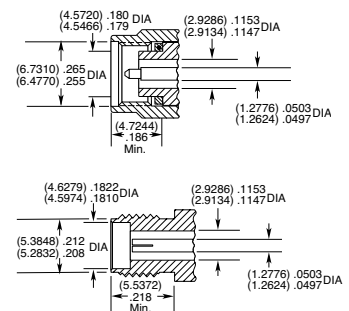
PRF92



CONNECTORS FOR INDUSTRY STANDARD CABLES	
PRF92-P-C-EE-405-SD	RG 405 Semi-Rigid
PRF92-P-C-EE-085A-SD	.085 Semi-Rigid
PRF92-P-C-EP-160-SS	Semflex HP160
PRF92-P-C-EP-150B-SS	IW 1501
PRF92-P-C-EP-142-SS	Harbour LL142
PRF92-J-C-EP-085-SS	Harbour SS405
PRF92-J-C-EP-085-BS	Harbour SS405
PRF92-P-C-EP-085-SS	Harbour SS405
PRF92-P-C-EE-402-SD	RG 402
PRF92-P-C-EP-190-SS	Semflex HP190
PRF92-J-C-EP-160-SS	Semflex HP160
PRF92-P-C-EP-120A-SS	Semflex HP120
PRF92-P-C-EP-140-SS	Dynawave DF140
PRF92-P-C-EP-047D-SS	.047 Semi-Rigid
PRF92-J-C-EP-047D-SS	.047 Semi-Rigid
PRF92-P-C-EP-150-SS	Dynawave DF150
PRF92-P-C-EE-118-SD	Haverhill HC35004
PRF92-J-C-EP-402-SS	RG 402
PRF92-J-C-EP-047D-4S	.047 Semi-Rigid
PRF92-P-C-EP-086-SS	Temp-Flex 1001935086
PRF92-P-C-EP-200-SS	Times Max Gain 200

For a complete list of 2.92 mm cable connectors, visit www.samtec.com?PRF92

INTERFACE STANDARD



P-C = Cable Plug
J-C = Cable Jack
EE = Plating (50 μ" Gold center contact & outer contact)
EP = Plating (50 μ" Gold center contact, passivated outer contact)
SS = Straight, Solder Clamp
SD = Straight, Direct Solder
BS = Bulkhead, Solder Clamp
4S = 4-hole flange, Solder Clamp