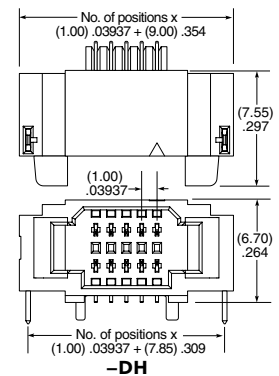
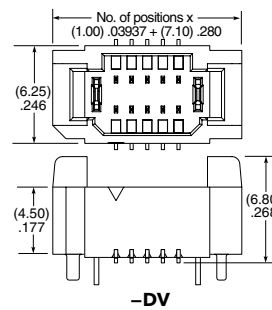
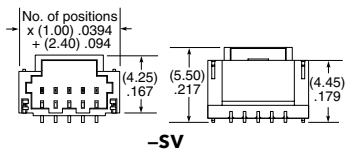
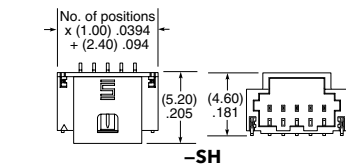


DISCRETE WIRE HEADER/CABLE COMPONENTS

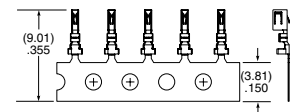
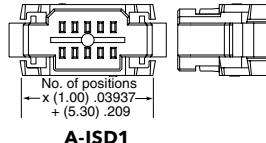
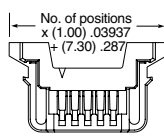
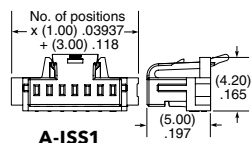
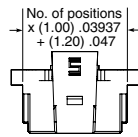
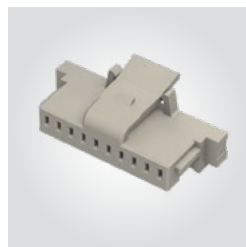
(1.00 mm) .0394" PITCH • A-T1M, A-ISS1, A-ISD1, A-CC09 SERIES

SPECIFICATIONS	A-T1M	NO. OF POSITIONS	PLATING OPTION	ROW OPTION	LATCH	OPTIONS
Insulator Material: Natural LCP Terminal Material: Phosphor Bronze Weld Tab: Phosphor Bronze Plating: Au or Sn over 50μ" (1.27 μm) Ni Operating Temp Range: -55°C to +85°C Current Rating: 3.3 A per pin (1 pin powered) Voltage Rating: 250 VAC/353 VDC		-02 thru -20	-GF = 3 μ" (0.07 μm) Gold contact and tail (-DH & -DV only) -F = 3 μ" (0.07 μm) Gold on contact, Matte Tin on tail (-SH & -SV only)	-SH = Single Row Horizontal -SV = Single Row Vertical -DH = Double Row Horizontal -DV = Double Row Vertical	(Required in callout for -SH & -SV) -L = Positive Latch (-SH & -SV only)	-K = (4.00 mm) .157" DIA Polyimide Film Pick & Place Pad (-SH & -DV only) -P = Pick & Place Pad (-SV only)

MICROMATE™



SERIES	NO. OF POSITIONS	LATCH	SERIES	01	PLATING
A-ISS1 = Single Row Body	-02 thru -20	-L = Positive Latch (Single row only)	A-CC09R = Contact, Full Reel (25,000 Parts per Reel)		-GF = 3 μ" (0.07 μm) Gold contact and tail
A-ISD1 = Double Row Body					



Contact Material:
Phosphor Bronze

TOOLING

Hand Tool: CAT-HT-309-2830-12

Clamp for mounting hand tool: CAT-HT-MNT-01

Mini Applicator: CAT-MC-309-2830-XX-01

Note:
Some lengths, styles and options are non-standard, non-returnable.

Due to technical progress, all designs, specifications and components are subject to change without notice.

samtec.com/Automotive

A-221