

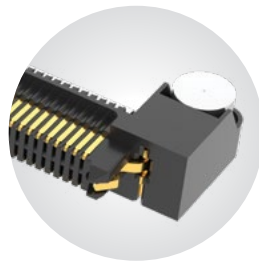
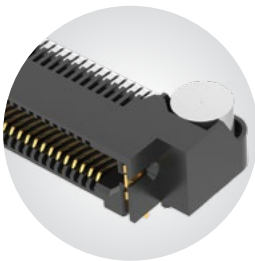
# RUGGED HIGH-SPEED STRIPS

NRZ	PAM4
28 Gbps	56 Gbps

## FEATURES & BENEFITS

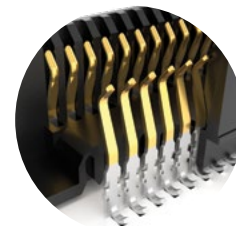
Edge Rate® rugged high-speed connector strips are designed for high speed, high cycle applications, and enabled by Samtec's signal integrity-optimized Edge Rate® contact system.

- 0.80 mm pitch
- 56 Gbps PAM4 performance
- Rugged latching, locking and 360° shielding available
- Up to 1.5 mm contact wipe; robust when "zippered" during unmating
- Compatible with A-UMPT/A-UMPS for power/signal flexibility



Contact Automotive group at [autosalesgroup@samtec.com](mailto:autosalesgroup@samtec.com) for information about Edge Rate® right-angle products.

**EDGE**  
**RATE**  
CONTACT



Signal integrity-optimized Edge Rate® contact system reduces broadside coupling

## KEY SPECIFICATIONS

SERIES	PITCH	STACK HEIGHTS	TOTAL PINS / PAIRS	INSULATOR MATERIAL	TERMINAL MATERIAL	PLATING	OPERATING TEMP RANGE	LEAD-FREE SOLDERABLE
A-ERM8 / A-ERF8	0.80 mm	7-18 mm	10-200	Black LCP	Phosphor Bronze or BeCu (A-ERM8), BeCu (A-ERF8)	Au or Sn over 50 μ" (1.27 μm) Ni	-55 °C to +125 °C	Yes

Due to technical progress, all designs, specifications and components are subject to change without notice.



**(0.80 mm) .0315" PITCH • RUGGED HIGH-SPEED HEADERS & SOCKETS**

TYPE	POSITIONS PER ROW	LEAD STYLE	PLATING OPTION	DV	OPTIONS	TR
------	-------------------	------------	----------------	----	---------	----

**A-ERM8**  
= Header  
**A-ERF8**  
= Socket

**-005, -010, -011, -013, -020, -025, -030, -035, -040, -049, -050, -060, -070, -075, -100**  
  
(100 Position Only Available with A-ERM8-09.0 & A-ERF8-05.0 Lead Styles; -L or -EGP not available)

Specify **LEAD STYLE** from Chart

**-L**  
= 10 μ" (0.25 μm)  
Gold on contact, Matte Tin on tail  
**-S**  
= 30 μ" (0.76 μm)  
Gold on contact, Matte Tin on tail

**-DS**  
= Differential Pair  
(A-ERM8-05.0 Lead Style with -010, -013, -025, -049 Positions only)

**-TR**  
= Tape & Reel

**-L**  
= Latching  
(A-ERM8-05.0 and -09.0 Lead Styles only and -EGP Option not available)  
(A-ERF8-05.0 Lead Style only and -L to -EGP Option not available)

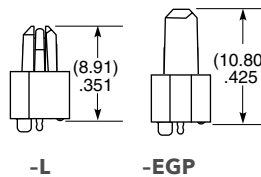
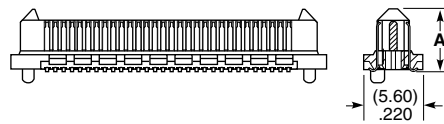
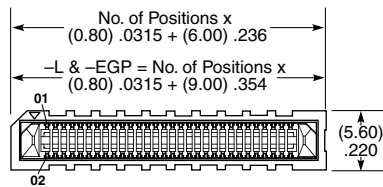
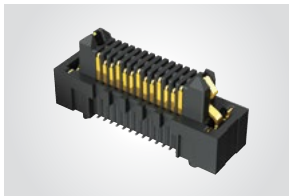
**-EGP**  
= Extended Guide Post  
(A-ERM8-05.0 and A-ERF8-07.0 Lead Style Only and -L Option not available)

**-DSP**  
= Differential Pair with Extended Guide Post  
(A-ERM8-05.0 Lead Style with -013 and -025 Positions only)

**-K**  
= Polyimide Film Pick & Place Pad  
(-02.0 Lead Style not available)



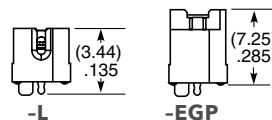
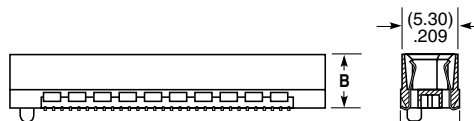
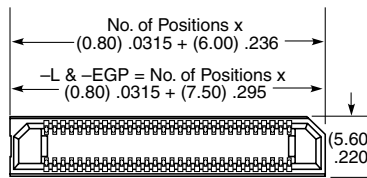
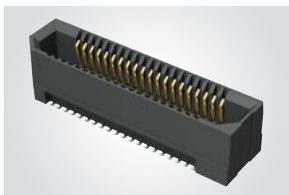
**A-ERM8**  
Board Mates:  
A-ERF8



LEAD STYLE	A (A-ERM8)	B (A-ERF8)
-02.0	(5.97) .235	N/A
-05.0	(8.91) .351	(5.10) .200
-07.0	N/A	(7.00) .276
-08.0	(11.91) .469	N/A
-09.0	(12.91) .508	(9.00) .354



**A-ERF8**  
Board Mates:  
A-ERM8



A-ERM8 LEAD STYLE	MATED HEIGHT*		
	A-ERF8 LEAD STYLE		
	-05.0	-07.0	-09.0
-02.0	(7.00) .276	(9.00) .354	(11.00) .433
-05.0	(10.00) .394	(12.00) .472	(14.00) .551
-08.0	(13.00) .512	(15.00) .591	(17.00) .669
-09.0	(14.00) .551	(16.00) .629	(18.00) .709

\*Processing conditions will affect mated height.

**Note:**  
Some lengths, styles and options are non-standard, non-returnable.

Due to technical progress, all designs, specifications and components are subject to change without notice.