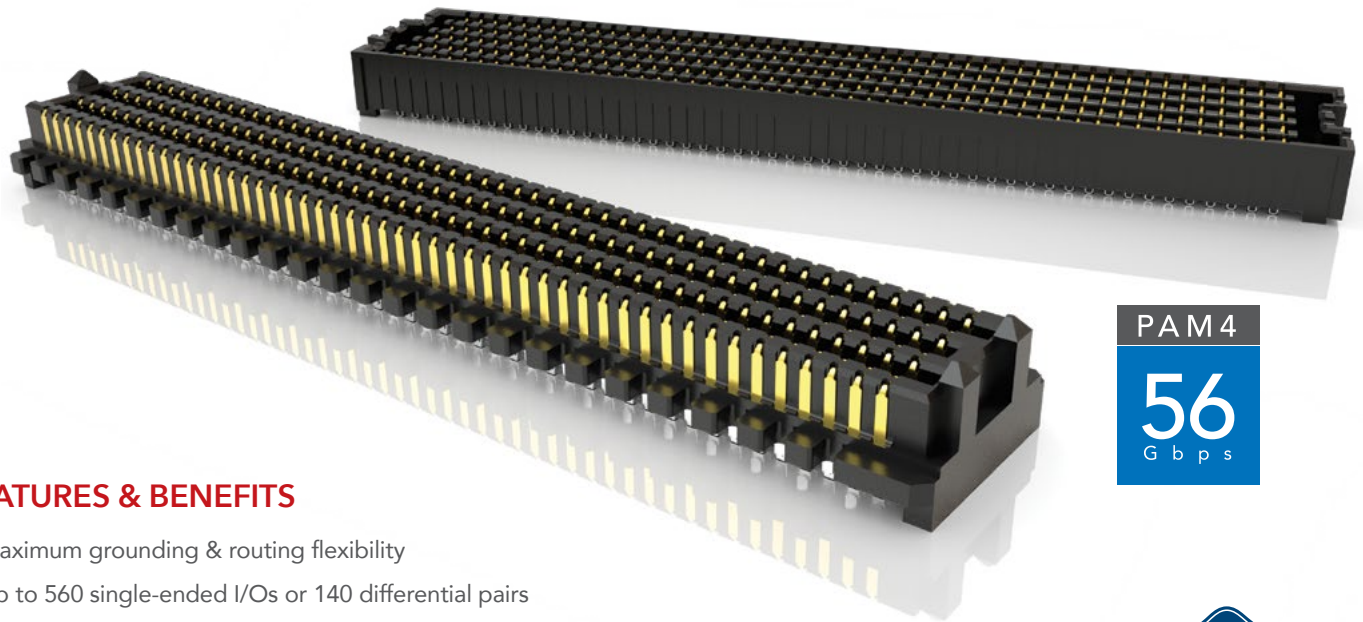




# HIGH-DENSITY OPEN-PIN-FIELD ARRAYS

(1.27 mm) .050" PITCH

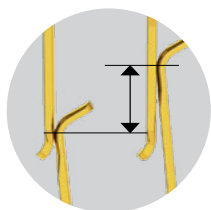


PAM4  
56  
Gbps

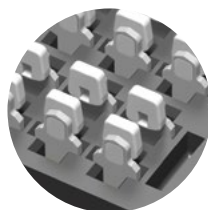
## FEATURES & BENEFITS

- Maximum grounding & routing flexibility
- Up to 560 single-ended I/Os or 140 differential pairs
- Rugged Edge Rate® contacts
- Compatible with A-UMPT/A-UMPS for power/signal flexibility
- Standards: VITA 47, VITA 57.1 FMC, VITA 57.4 FMC+, VITA 74 VNX, PISMO™ 2
- Supports high-speed protocols such as Ethernet, PCI Express®, Fibre Channel & InfiniBand

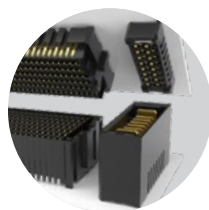
EDGE  
RATE  
CONTACT



(1.12 mm) .044"  
Nominal Wipe

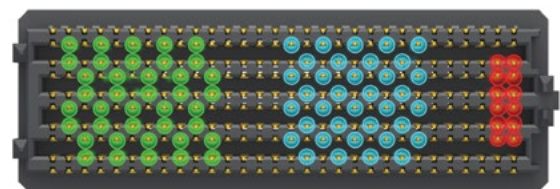


Solder Charges



Power / Signal  
Applications

## MAXIMUM GROUNDING & ROUTING FLEXIBILITY



Differential Pair      Single-Ended      Power

## KEY SPECIFICATIONS

PITCH	STACK HEIGHTS	TOTAL PINS	INSULATOR MATERIAL	CONTACT MATERIAL	PLATING	OPERATING TEMP RANGE	CURRENT RATING	WORKING VOLTAGE	LEAD-FREE SOLDERABLE
1.27 mm x 1.27 mm	7 mm - 18.5 mm	40 - 560	Black LCP	Copper Alloy	Au or Sn over 50 μ" (1.27 μm) Ni	-55 °C to +125 °C	2.7 A per pin (10 adjacent pins powered) 7 mm stack height	240 VAC	Yes

**Note:** Some lengths, styles and options are non-standard, non-returnable

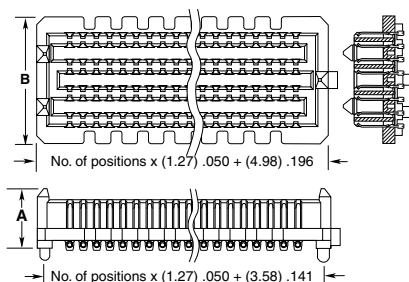
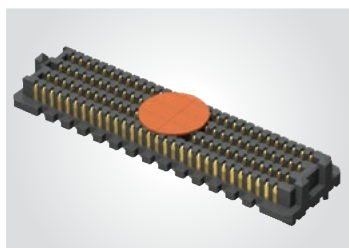
Due to technical progress, all designs, specifications and components are subject to change without notice.



**(1.27 mm) .050" PITCH • A-SEAM/A-SEAF SERIES**

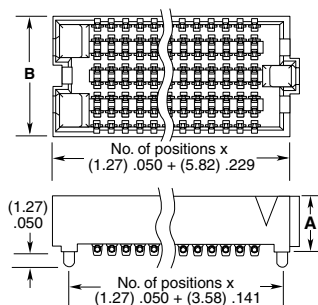
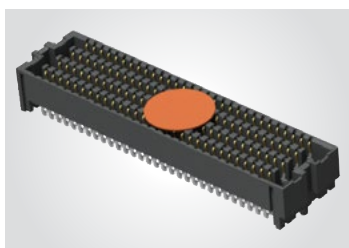
SERIES	POSITIONS PER ROW	LEAD STYLE	PLATING OPTION	NO. OF ROWS	SOLDER TYPE	A	K	TR
<b>A-SEAM</b> Terminal	<b>-10, -15, -20, -30, -40, -50</b>	Specify <b>LEAD STYLE</b> from chart	<b>-L</b> = 10 μm (0.25 μm) Gold on contact area, Matte Tin on solder tail	<b>-04</b>	<b>-2</b> = Lead-Free Solder Charge	<b>-A</b> = Alignment Pin	<b>-K</b> Polyimide Film Pick & Place Pad	<b>-TR</b> = Tape & Reel
<b>A-SEAF</b> Socket	A-SEAM & A-SEAF: -10 only available in -04 Row			<b>-05</b>				
	A-SEAM: -15 only available in -04 Row with -02.0 Lead Style, and -10 Row with any Lead Style;			<b>-10</b> A-SEAM: -04, -05 & -06 (Rows not available with -06.5 Lead Style)				
	A-SEAF: -15 only available in -04 or -10 Row with -5.0 Lead Style		<b>-S</b> = 30 μm (0.76 μm) Gold on contact area, Matte Tin on solder tail					

**A-SEAM**  
Board Mates:  
**A-SEAF**



LEAD STYLE	A	NO. OF ROWS	B
-02.0	(5.61) .221	-04	(7.06) .278
-03.0	(6.60) .260	-05, -06	(9.60) .378
-03.5	(7.11) .280	-08	(12.14) .478
-06.5	(10.16) .400	-10	(14.68) .578
-07.0	(10.59) .417		
-09.0	(12.60) .496		
-11.0	(14.61) .575		

**A-SEAF**  
Board Mates:  
**A-SEAM**



LEAD STYLE	A	NO. OF ROWS	B
-05.0	(5.05) .199	-04	(5.66) .223
-06.0	(6.05) .238	-05, -06	(8.20) .323
-06.5	(6.55) .258	-08	(10.74) .423
-07.5	(7.54) .297	-10	(13.28) .523

MATED HEIGHTS				
A-SEAM LEAD STYLE	A-SEAF LEAD STYLE			
	-05.0	-06.0	-06.5	-07.5
-02.0	7 mm	8 mm	8.5 mm	9.5 mm
-03.0	8 mm	9 mm	9.5 mm	10.5 mm
-03.5	8.5 mm	9.5 mm	10 mm	11 mm
-06.5	11.5 mm	12.5 mm	13 mm	14 mm
-07.0	12 mm	13 mm	13.5 mm	14.5 mm
-09.0	14 mm	15 mm	15.5 mm	16.5 mm
-11.0	16 mm	17 mm	17.5 mm	18.5 mm

STANDARDS
VITA 47
VITA 57.1 FMC
VITA 57.4 FMC+
VITA 74 VNX
PISMO™2
Visit <a href="http://www.samtec.com/standards">www.samtec.com/standards</a> for more information.

**Notes:**  
IPC-A-610F and  
IPC J-STD-001F Class 3 solder joint.

Due to technical progress, all designs, specifications and components are subject to change without notice.