

ACCELERATE[®] Boost

OPTIMIZED PERFORMANCE CABLE ASSEMBLIES

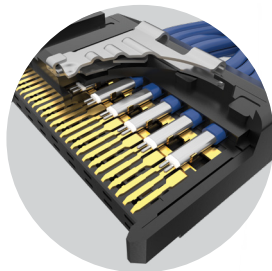
(0.635 mm) .025" PITCH

PAM4

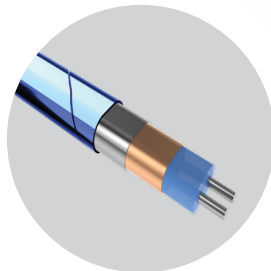
112
Gbps

FEATURES & BENEFITS

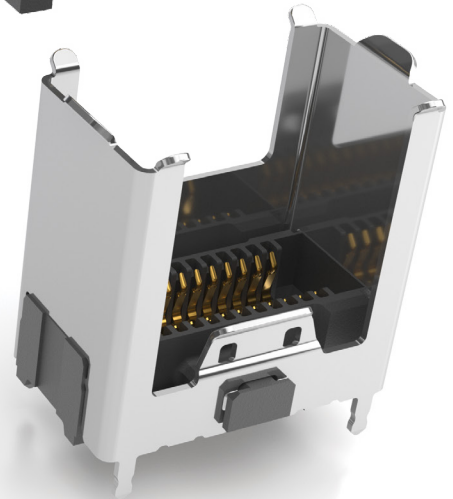
- 112 Gbps PAM4 with enhanced signal integrity performance compared to similar cable solutions
- Significant reduction in NEXT and Return Loss with lower resonances and tighter impedance
- High-density 2-row design with increased row-to-row spacing
- 8, 16 and 24 differential pair configurations
- 34 AWG Eye Speed Thinax™ 92 Ω ultra low skew twinax cable
- Thinax™ cable provides overall weight reduction and maximizes airflow, making it easy to route through systems (3.5 ps/meter max)
- Extended flexible strain relief for increased durability
- Mating connector features Samtec's surface mount solder column board termination for improved footprint and break out region (BOR)
- Rugged weld tabs, metal latching and shielding



Contacts directly soldered to the twinax for improved signal integrity



Thinax™ features a 40% smaller cross-sectioned area vs. EyeSpeed® twinax



KEY SPECIFICATIONS (ABC6)

CABLE	INSULATOR MATERIAL	CONTACT MATERIAL	PLATING	OPERATING TEMP RANGE	CURRENT RATING	VOLTAGE RATING
34 AWG, 92 Ω ultra low skew twinax cable	LCP	Copper Alloy	Au over 50 μ" (1.27 μm) Ni	Testing Now!	Testing Now!	Testing Now!

(0.635 mm) .025" • SLIM CABLE & SOCKET

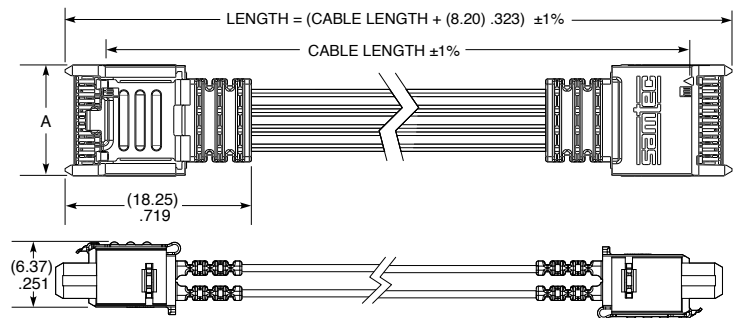
ABC6	NO. OF POSITIONS	CABLE LENGTH	END 1	END 2	WIRING OPTION	CABLE TYPE
	-013 -025, -03	-"XX.X" = Length in Inches 03.0" (76.2 mm) minimum	-LU = Latch Up	-LU = Latch Up -LD = Latch Down	-2 = Pin A1 to Pin B1 (Only with End 2 -LD option) -3 = Pin A1 to Pin AN (Only with End 2 -LU option)	-1 = 34 AWG, 100Ω ultra-low skew ThinAx-cable

ABC6
Board Mates:
ABF6



NO. OF POSITIONS	A
-013	(10.90) .429
-025	(18.52) .729
-037	(26.14) 1.029

PRELIMINARY



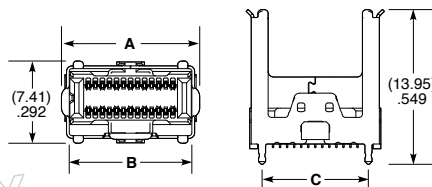
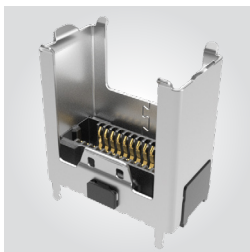
ABC6-013-XX.X-LU-LD-X-1 SHOWN

Notes:
Cable lengths longer than 40.00" (1 meter) are not supported with S.I. test data.

View complete specifications at: samtec.com?ABC6

ABF6	NO. OF POSITIONS	LEAD STYLE	PLATING	ROW	"X"R
	-013, -025, -037	-03.5 = 3.5 mm	-S = 30 μ" (0.76 μm) Gold on contact area, Matte Tin on tail	-02 = 2 Row	-TR = Tape & Reel -FR = Full Reel Tape & Reel (must order maximum quantity per reel; contact Samtec for quantity breaks)

ABF6
Cable Mates:
ABC6



ABF6-013-03.5-S-02-XR SHOWN

NO. OF POSITIONS	A	B	C
-013	(11.82) .465	(10.95) .431	(9.59) .378
-025	(19.44) .765	(18.57) .731	(17.21) .678
-037	(27.06) 1.065	(26.19) 1.031	(24.83) .978

Notes:
Tape & Reel packaging and K-Dot are standard.

Some sizes, styles and options are non-standard, non-returnable.

PRELIMINARY

View complete specifications at: samtec.com?ABF6