

# ACCLIMATE™

ACRK-22-01-G-T-B1-P-1

ACRK-22-05-G-T-B1-M-1

ACRK-22 SERIES

# 22 mm IP68 FIELD TERMINATION KIT

### SPECIFICATIONS

For complete specifications and processing guidelines see [www.samtec.com?ACRK-22](http://www.samtec.com?ACRK-22)

**Terminal Material:**

Brass  
**Contact Material:**  
 Brass/BeCu

**Operating Temp Range:**

-10 °C to +105 °C

**Housing:**

-P: Thermoplastic

-M: Zinc Alloy

**RoHS Compliant:**

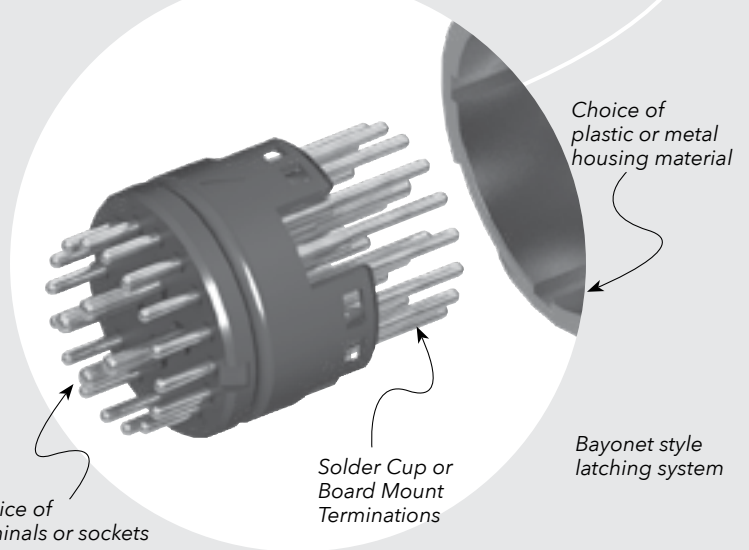
Yes

**Mates with:**

ACP-22, ACPK-22

CURRENT RATING		
LEAD STYLE	PINS POWERED	CCC per PIN
-01	30	2.0 A
-02	20	2.3 A
-03	8	8.3 A

For general reference only. See [www.samtec.com?ACRK-22](http://www.samtec.com?ACRK-22) for complete test data or contact [AccliMate@samtec.com](mailto:AccliMate@samtec.com) for applications requiring higher current carrying capacity.



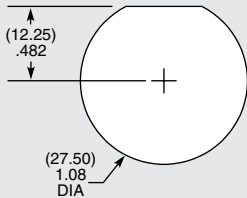
### DUST CAPS

- DCA-ACR-22-M-X (Metal)
- DCA-ACR-22-P-X (Plastic)



- Visit [sealedio.samtec.com](http://sealedio.samtec.com) for a complete list of sealed systems

### PANEL OPENING



### NOTE

For complete specifications and processing guidelines see [www.samtec.com?ACRK-22](http://www.samtec.com?ACRK-22)

**Note:**  
 Some lengths, styles and options are non-standard, non-returnable.

ACRK	22	LEAD STYLE	PLATING	GENDER	TERMINATION	HOUSING MATERIAL	KEY
		<b>-01</b> = 1.0 mm DIA (30) (20-24 AWG)	<b>-G</b> = 10 μm (0.25 μm) Gold over 50 μm (1.27 μm) Ni on contact	<b>-T</b> = Terminal  <b>-S</b> = Socket	<b>-C</b> = Solder Cup  <b>-B1</b> = (1.60 mm) .062" Board Mount	<b>-P</b> = Plastic  <b>-M</b> = Metal	<b>-1</b> = Orange, 45°

(1.0) .040 DIA (30)

-01

(1.0) .040 DIA (20)

-02

(1.5) .060 DIA (8)

-03

-C END SHOWN