

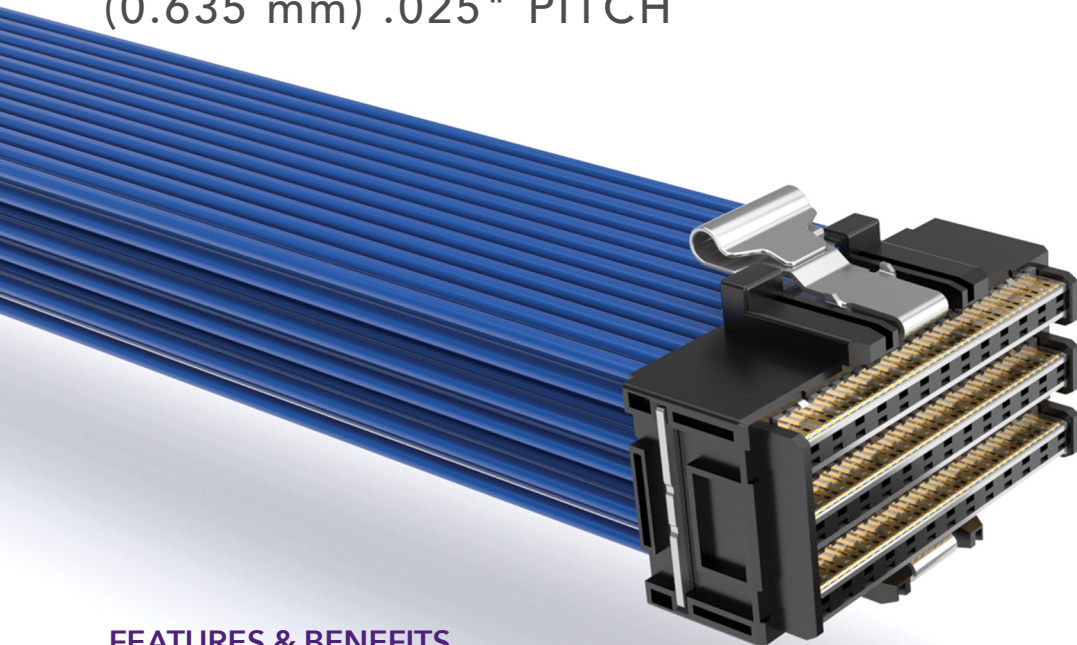
ACCELERATE[®]HP

EXTREME DENSITY CABLE SYSTEM

(0.635 mm) .025" PITCH

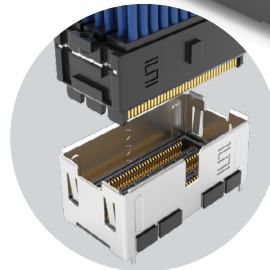
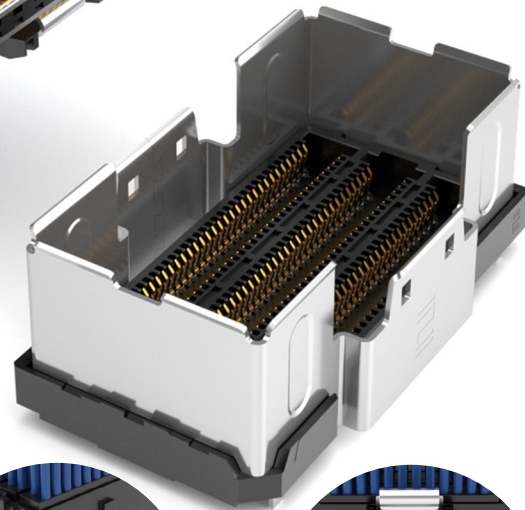
PAM4

112
G b p s

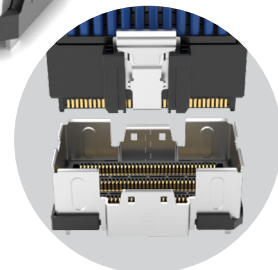


FEATURES & BENEFITS

- Industry's highest density 112G PAM4 cable system
- 0.635 mm contact pitch; 2.20 x 2.40 mm row-to-row pitch
- 4, 6 and 8 rows; 8 or 12 pairs per row
- Up to 96 Thinax™ ultra low skew twinax cable
- Single-ended micro coax configuration
 - 34 AWG ThinSE™ micro coax cables
 - 12 or 18 coax per row
 - Dedicated G-S-G-S-G layout for reduced crosstalk
- Right-angle mating connector
- 112 Gbps PAM4 double density direct-to-chip package solution with up to 144 differential pairs and Eye Speed Thinax™ ultra low skew twinax cable (ART6/ATF6); contact HDR@samtec.com for information
- Cable-to-cable solution in development



Locking for maximum density
(removal tool required)



Squeeze latching
for quick disconnect

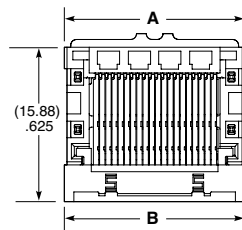
KEY SPECIFICATIONS (ARP6)

CABLE	INSULATOR MATERIAL	CONTACT MATERIAL	PLATING	OPERATING TEMP RANGE	CURRENT RATING	VOLTAGE RATING
34 AWG, 92 Ω Thinax™ ultra skew twinax cable	Black LCP	Copper Alloy	Au or Sn over 50 μ" (1.27 μm) Ni	-40 °C to +125 °C	1.3 A (6 pins powered)	165 VAC/233 VDC
34 AWG, 50 Ω ThinSE™ micro coax cable						

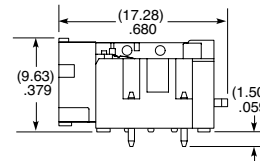
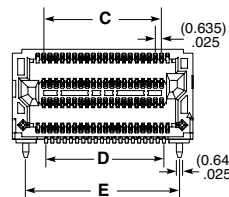
(0.635) .025" RIGHT-ANGLE CABLE CONNECTOR

APF6	NO. OF POSITIONS	PLATING OPTION	NO. OF ROWS	SOLDER TYPE	OPTION	K OPTION	"X"R
	-025, -037 (Per Row)	-S = 30 μm (0.76 μm) Gold on contact area, Matte Tin on tail	-04 = Four Rows	-1 = Tin/Lead Alloy Solder Charge -2 = Lead-Free Solder Charge	-RA = Right-Angle panel mount (-04 row only) (Requires cage; visit samtec.com?APF6-C) -RA-S = Right-Angle mid-board shield (-04 row & ARP6-S mate only)	-K = (8.99 mm) .354" DIA Polyimide film Pick & Place Pad (-RA only)	-TR = Tape & Reel -FR = Full Reel Tape & Reel (must order max. quantity per reel; contact Samtec for quantity breaks)

APF6-RA
Cable Mates:
ARP6



NO. OF POSITIONS	A	B	C	D	E
-025	(21.67) .853	(21.670) .8531	(15.240) .6000	(15.240) .6000	(18.92) .745
-037	(29.29) 1.153	(29.290) 1.1531	(22.860) .9000	(22.860) .9000	(26.54) 1.045



Notes:
Some sizes, styles and options are non-standard, non-returnable.

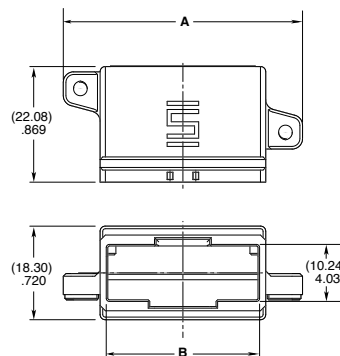
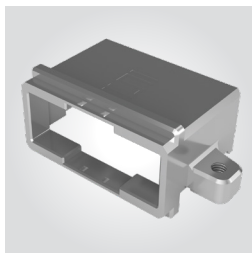
APF6-037-S-04-2-RA SHOWN

View complete specifications at: samtec.com?APF6-RA

CAGE FOR RIGHT-ANGLE CONNECTOR

APF6	NO. OF POSITIONS	NO. OF ROWS	OPTION	01	C
	-025, -037	-04 = Four Rows	-PT1 = Panel End, Threaded Hole		

APF6-C
Use With:
APF6-RA



NO. OF POSITIONS	A	B
-025	(37.87) 1.49	(21.24) .836
-037	(45.49) 1.79	(28.86) 1.14

APF6-037-04-PT1-01-C

Note:
Some sizes, styles and options are non-standard, non-returnable.

View complete specifications at: samtec.com?APF6-C