

ULTRA RUGGED I/O SYSTEMS

(1.00 mm) .0394" PITCH



FEATURES & BENEFITS

- Small form factor
- Four points of contact for a reliable connection and high mating cycles
- Up to 40 positions per row
- Cable-to-cable & cable-to-board solutions
- EMI shielding limits signal degradation and optimizes performance
- Through-hole or surface mount
- 28 & 30 AWG cable



Shown actual size
at 20 total positions



Hyperboloid-type contact for
extreme high mating cycles



Extreme density with up to 1,450 total I/Os in a 1RU panel
(29 cables at 50 total I/Os each)

KEY SPECIFICATIONS (P1PD(X), B1SD(X) & P1M)

PITCH	INSULATOR MATERIAL	CONTACT MATERIAL	SHIELD MATERIAL	PLATING	OPERATING TEMP RANGE	CURRENT RATING	VOLTAGE RATING
1.00 mm	Liquid Crystal Polymer	Beryllium Copper	Zinc Alloy	Au over 50 μ m (1.27 μ m) Ni	-10 °C to +80 °C (PVC) -40 °C to +125 °C (*Teflon™ Fluoropolymer)	3.8 A per pin (2 pins powered)	200 VAC/ 282 VDC

*Teflon™ is a trademark of The Chemours Company FC, LLC used under license by Samtec.

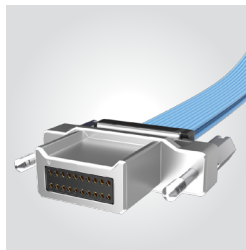
(1.00 mm) .0394" PITCH • NON-PANEL MOUNT I/O CABLE/COMPONENTS

SERIES	NO. OF POSITIONS	WIRE GAUGE	COLOR CODE	PLATING	ASSEMBLED LENGTH	EMI SHIELD	PINOUT
--------	------------------	------------	------------	---------	------------------	------------	--------

B1SD
= Double Row
Non-Panel Mount
PVC Cable

B1SDT
= Double Row
Non-Panel Mount
Blue *Teflon™
Fluoropolymer Cable

B1SD, B1SDT
Cable Mates:
P1PD, P1PDT
Board Mates:
P1M



B1SD
PRELIMINARY

(Leave blank for standard wire)
C
= Color Code Wire
(Not available with B1SDT)

-H
= 30 μ" (0.76 μm)
Gold on
contact area,
Gold flash
on tail

-"XX.X"
= Length in
inches
06.0"
(152.4 mm)
minimum

(Leave blank for
non-EMI shield)
-E
= EMI Shield
(Not available
with single ended)

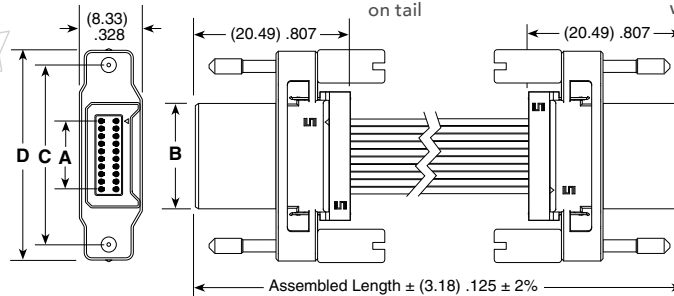
(Leave
blank for
single
ended)

1
= Pin 1 to
Pin 1

2
= Pin 1 to
Pin 2

3
= Pin 1 to
Pin N

4
= Pin 1 to
Pin N-1



B1SDX-10-XXX-H-XX.X-3 SHOWN

NO. OF POSITIONS	A	B	C	D
-10	(9.00) .354	(13.94) .549	(23.75) .935	(27.75) 1.093
-15	(14.00) .551	(18.94) .746	(28.75) 1.132	(32.75) 1.289
-25	(24.00) .945	(28.94) 1.139	(38.75) 1.526	(42.75) 1.683
-30	(29.00) 1.142	(33.94) 1.336	(43.75) 1.722	(47.75) 1.880

*Teflon™ is a trademark of The Chemours Company FC, LLC used under license by Samtec.

Notes:
Teflon™ Fluoropolymer Cable is intended for crimp only. Contact Samtec for solderable cable applications.

Some lengths, styles and options are non-standard, non-returnable.

B1SD & B1SDT CABLE HOLDER (Required for use with IBT1)

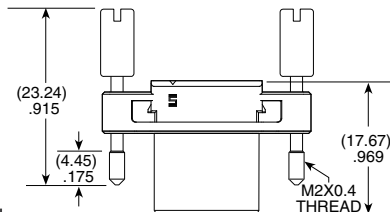
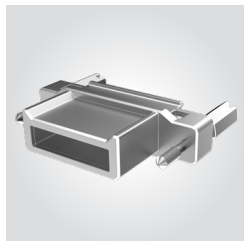
SERIES	NUMBER OF POSITIONS
B1SDR	-10, -15, -25, -30

View complete specifications at: samtec.com?B1SD & samtec.com?B1SDT

B1SDS	NO. OF POSITIONS	N	OPTION
-------	------------------	---	--------

-10, -15, -25, -30

-CS
= Captive
Screw



NO. OF POSITIONS	A
-10	(27.75) 1.093
-15	(32.75) 1.289
-25	(42.75) 1.683
-30	(47.75) 1.880

Note:
Some lengths, styles and options are non-standard, non-returnable.

TOOLING

Hand Tool:
CAT-HT-508-2830-12

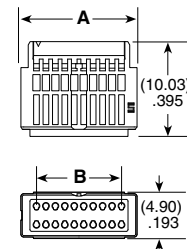
Mini Applicator:
CAT-MC-508-2830-XX-03

For more tooling information, visit samtec.com/tooling

View complete specifications at: samtec.com?B1SDS, samtec.com?IBT1 & samtec.com?CC508

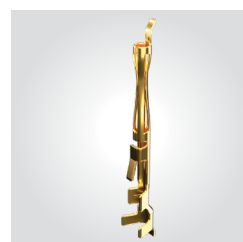
IBT1	NO. OF POSITIONS	1
------	------------------	---

-10, -15, -25, -30



NO. OF POSITIONS	A	B
-10	(12.290) .484	(9.00) .354
-15	(17.290) .681	(14.00) .551
-25	(27.290) 1.074	(24.00) .945
-30	(32.290) 1.271	(29.00) 1.142

CC508	01	PLATING	PACKAGING
-------	----	---------	-----------



-H
= 30 μ" (0.76 μm)
Gold on contact area,
Gold flash on tail

-R
= Full Reel
(25,000 Contacts
Per Reel)

-M
= Mini Reel
(1,000 to 5,000
Contacts Per Reel)

-B
= Bubble Bag
(35 Contacts)

