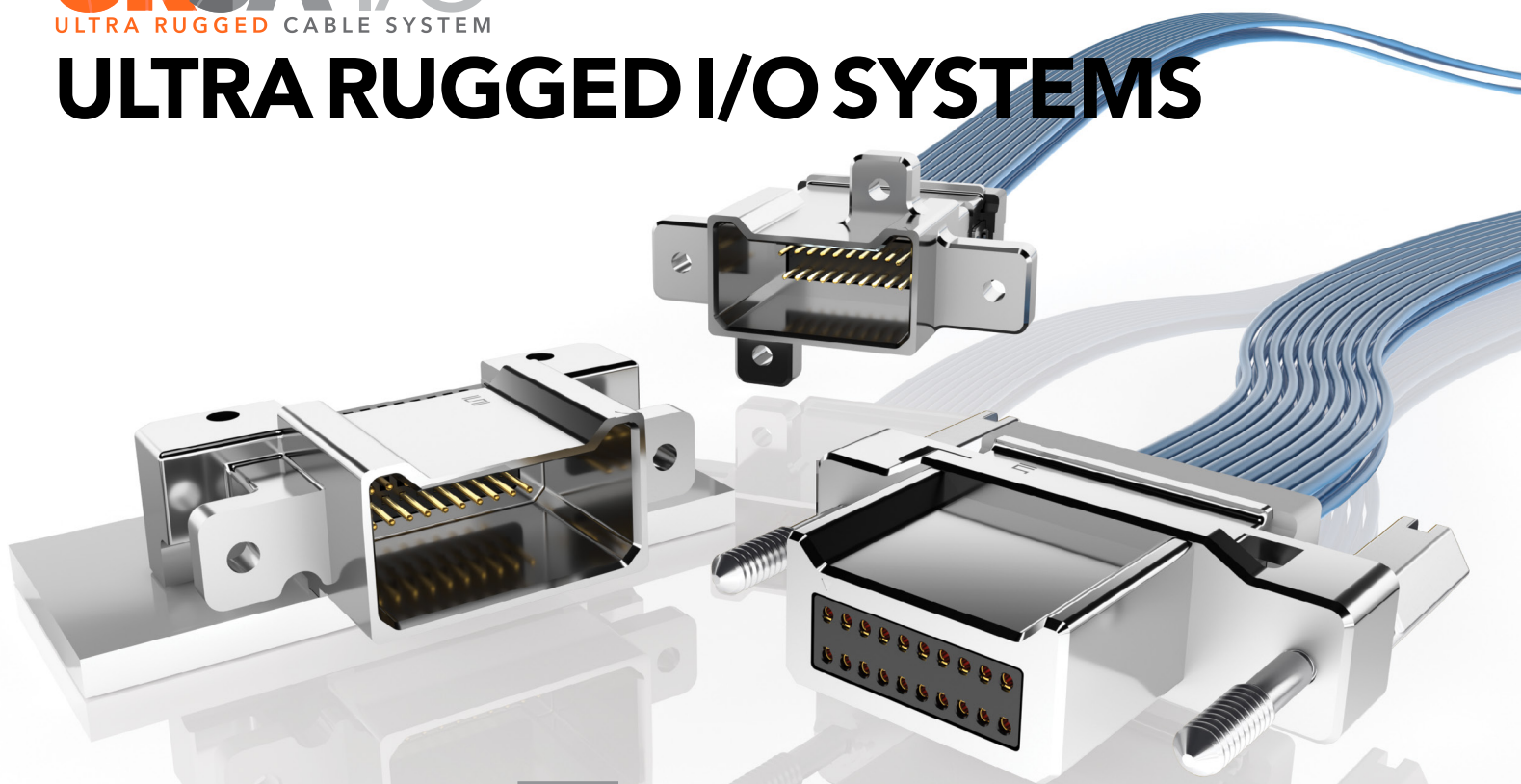


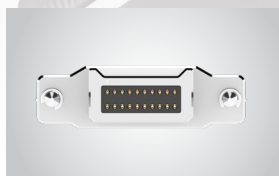
ULTRA RUGGED I/O SYSTEMS



FEATURES & BENEFITS

MAX
3.8
A m p s

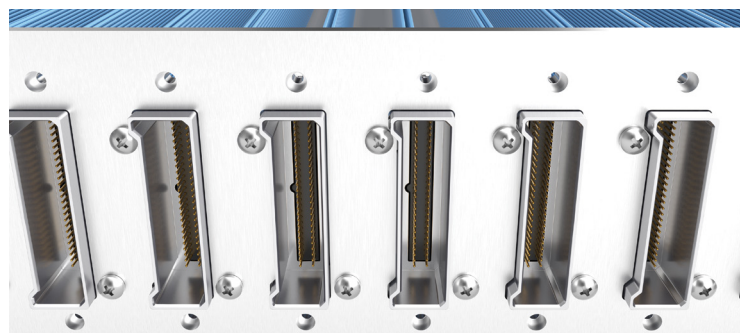
- Small form factor
- Four points of contact for a reliable connection and high mating cycles
- Up to 40 positions per row
- Cable-to-cable & cable-to-board solutions
- EMI shielding limits signal degradation and optimizes performance
- Through-hole or surface mount
- 28 & 30 AWG cable
- Availability of contacts (high-speed, RF, power) in 1 to 5 block configurations (See page 231)



Shown actual size at 20 total positions



Hyper Claw™ Hyperboloid-type contact for extreme high mating cycles



Extreme density with up to 1,450 total I/Os in a 1RU panel (29 cables at 50 total I/Os each)

KEY SPECIFICATIONS

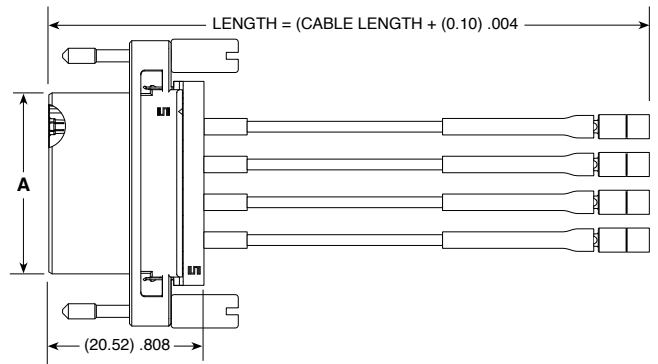
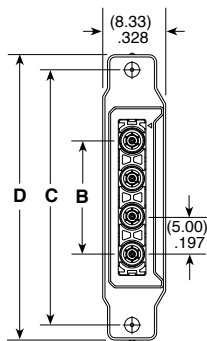
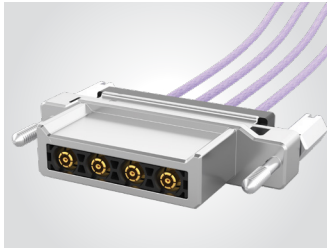
SERIES	INSULATOR MATERIAL	CONTACT MATERIAL	SHIELD MATERIAL	PLATING	OPERATING TEMP RANGE	CURRENT RATING	VOLTAGE RATING
P1PD(X), B1SD(X), P1M	Liquid Crystal Polymer	Beryllium Copper	Zinc Alloy	Au over 50 μ" (1.27 μm) Ni	-10 °C to +80 °C (PVC) -40 °C to +125 °C (*Teflon™ Fluoropolymer)	3.8 A per pin (2 pins powered)	200 VAC/ 282 VDC
B1SM		Copper Alloy		50 μ" (1.27 μm) Au center contact	Testing Now!	Testing Now!	Testing Now!
P1SM				30 μ" (0.76 μm) Au center contact			

*Teflon™ is a trademark of The Chemours Company FC, LLC used under license by Samtec.

SMPM GANGED CABLE ASSEMBLY

B1SM	NO. OF POSITIONS	END 2 CONNECTOR	CABLE LENGTH
	-02, -04, -06	(Refer to RF047-A)	-"XXXX" = Length in millimeters 0100 mm MIN

B1SM
Cable Mates:
P1SM



B1SM-04-XXXX-XXXX SHOWN

NO. OF POSITIONS	A	B	C	D
-02	(13.94) .354	(5.00) .197	(23.75) .935	(27.75) 1.093
-04	(23.94) .943	(15.00) .594	(33.75) 1.330	(37.75) 1.487
-06	(33.94) 1.337	(25.00) .985	(43.75) 1.724	(47.75) 1.881

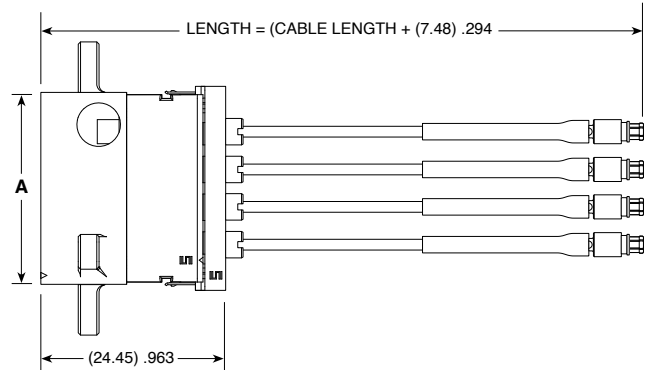
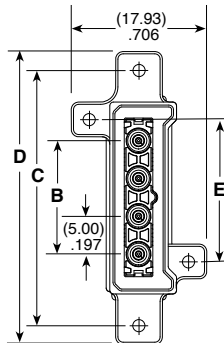
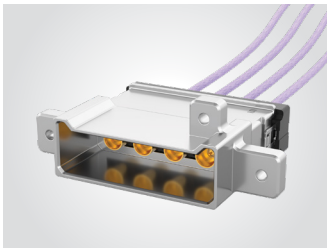
Notes:
Cable lengths longer than 1000 millimeter are not supported with S.I. test data.

Some sizes, styles and options are non-standard, non-returnable.

View complete specifications at: samtec.com?B1SM

P1SM	NO. OF POSITIONS	END 2 CONNECTOR	CABLE LENGTH
	-02, -04, -06	(Refer to RF047-A)	-"XXXX" = Length in millimeters 0100 mm MIN

P1SM
Cable Mates:
B1SM



P1SM-04-XXXX-XXXX SHOWN

NO. OF POSITIONS	A	B	C	D	E
-02	(15.39) .606	(5.00) .197	(23.75) .936	(25.75) 1.015	(8.79) .346
-04	(25.39) 1.000	(15.00) .591	(33.75) 1.330	(35.75) 1.409	(18.79) .740
-06	(35.39) 1.394	(25.00) .985	(43.75) 1.724	(45.75) 1.803	(28.79) 1.134

Notes:
Cable lengths longer than 1000 millimeter are not supported with S.I. test data.

Some sizes, styles and options are non-standard, non-returnable.

View complete specifications at: samtec.com?P1SM