

BARA-00SJ7-05-11-0200

BULLSEYE®
TEST POINT SYSTEM

BARA SERIES

BULLS EYE® 22 POSITION ASSEMBLY

SPECIFICATIONS

For complete specifications see www.samtec.com?BARA

RF Connector:

Outer Contact Material:
Brass (SMA), Gold (SMP)

Center Contact Material:
Brass (SMA Plug)

BeCu (SMA & SMP Jack)

Insulator Material:
PTFE

Operating Temperature:
-65 °C to +165 °C

Impedance:
50 Ω

RoHS Compliant:
Yes

MWC-2550-01

Cable:

Cable Type:
Low Loss Microwave Coax

Gauge:
25 AWG Silver plated Copper

Dielectric:
Solid FEP

Jacket Material:
FEP

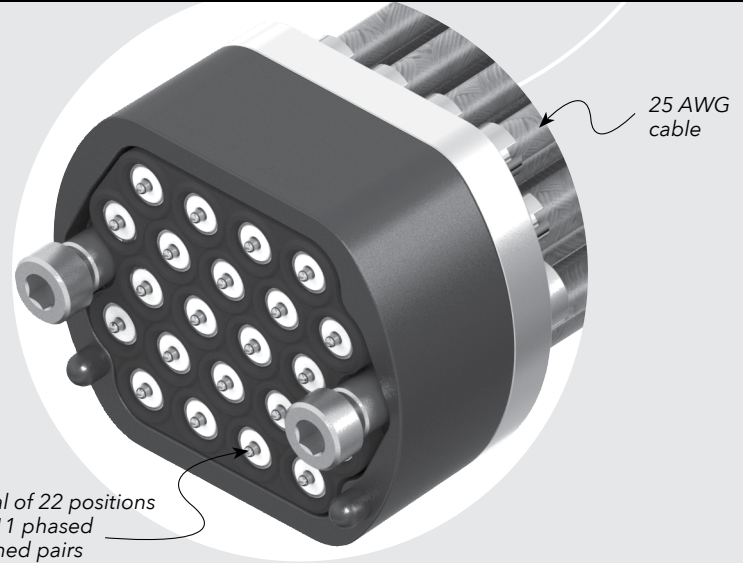
Bend Radius:
9 mm

Impedance:
50 Ω ±1 Ω

Propagation Delay:
3.84 nsec/meter

Capacitance:
75.4 pF/meter

Mates with:
SMA, SMP



BARA

END 2 CONNECTOR

PHASE MATCHING

11

OVERALL LENGTH

Specify
END 2 OPTION
from chart

-02
= 2.0 Pico-second

-05
= 5.0 Pico-second

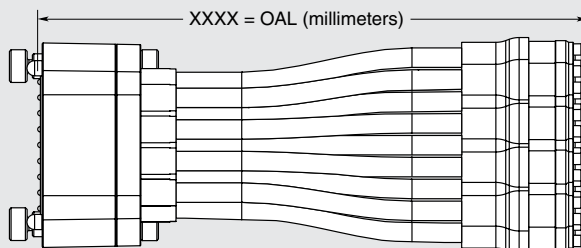
-10
= 10.0 Pico-second

-11
= Number
of phase
matched
pairs

-"XXXX"
= Overall Length
in millimeters
-0100
(100 mm) 3.94"
to **-9999**
(9999 mm) 393.7"

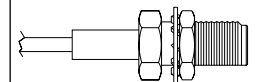
OTHER SOLUTIONS

- Replacement elastomer gaskets available

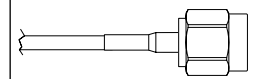


END 2 OPTIONS

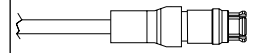
-01BJ1 = SMA
Bulkhead Jack
(30 μ" (0.76 μm) Gold on Center Contact, Gold Flash on Shell)



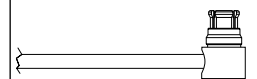
-01SP1 = SMA
Straight Plug
(30 μ" (0.76 μm) Gold on Center Contact, Gold Flash on Shell)



-00SJ7 = SMP
Straight Jack
(10 μ" (0.25 μm) Gold on Center Contact, Gold Flash on Shell)



-00RJ7 = SMP
Right-Angle Jack
(10 μ" (0.25 μm) Gold on Center Contact, Gold Flash on Shell)



Note:
Some lengths, styles and options are non-standard, non-returnable.