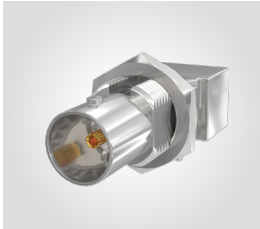




## 75 Ω DIE CAST BNC TO 12 GHz

**BNC Board Connectors**  
BNC7T-TH, BNC7T-BH,  
BNC7T-BM, BNC7T-EM

**Cable Mates:**  
RF179, RFA6T, RFB6T,  
RFC6T, GRF7H-C



BNC7T	GENDER	TYPE	PLATING	ORIENTATION	TERMINATION	PACKAGING
	-J = Jack	-P = PCB Mount	-GN = 10 μ" (0.25 μm) Gold contact, 100 μ" (2.54 μm) Nickel Shell	-ST = Straight  -RA = Right-angle Bulkhead/Panel Mount	-TH2D = Tall Through-hole Die Cast (-ST only)  -BH2D* = Low Profile Die Cast Bulkhead Through-hole (-RA only)  -BM1D* = Low Profile Die Cast Bulkhead Mixed Technology for (1.60 mm) .062" PCB (-RA only)  -BM2D* = Low Profile Die Cast Bulkhead Mixed Technology for (3.18 mm) .125" PCB (-RA only)  -EM1D* = Edge Mount Die Cast Bulkhead/Panel Mount for (1.60 mm) .062" PCB (-ST only)  -EM2D* = Edge Mount Die Cast Bulkhead/Panel Mount for (2.40 mm) .093" PCB (-ST only)	Leave blank for individually bagged.  -B = Bulk packaged (-BH2D only)

**Notes:**  
Contact RFGroup@samtec.com for 12G-SDI PCB mount launch characteristics.

Designed to meet SMPTE 2082 12G-SDI specifications.

Additional plating options available on Board Connectors. Contact RFGroup@samtec.com

\*Lock washers & knurled nuts supplied with bulkhead/panel mount options

## 75 Ω MACHINED BNC TO 12 GHz

**BNC Board Connectors**  
BNC7T-TH, BNC7T-BH,  
BNC7T-EM

**Cable Mates:**  
RF179, RFA6T, RFB6T,  
RFC6T, GRF7H-C



BNC7T	GENDER	TYPE	PLATING	ORIENTATION	TERMINATION	PACKAGING
	-J = Jack	-P = PCB Mount	-GN = 10 μ" (0.25 μm) Gold contact, 100 μ" (2.54 μm) Nickel Shell	-ST = Straight  -RA = Right-angle Bulkhead/Panel Mount	-TH1 = Standard Through-hole (-ST only)  -BH1* = Standard Bulkhead Through-hole (-RA only)  -EM1* = Edge Mount Bulkhead/Panel Mount for (1.60 mm) .062" PCB (-ST only)  -EM2* = Edge Mount Bulkhead/Panel Mount for (2.40 mm) .093" PCB (-ST only)	Leave blank for individually bagged.  -B = Bulk packaged (-BH1 only)

**Notes:**  
Contact RFGroup@samtec.com for 12G-SDI PCB mount launch characteristics.

Designed to meet SMPTE 2082 12G-SDI specifications.

Additional plating options available on Board Connectors. Contact RFGroup@samtec.com

\*Lock washers & knurled nuts supplied with bulkhead/panel mount options