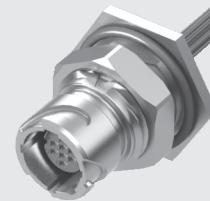


CCRB-12-1-L-T-B1-P

CCR-12-1-L-00.3-S-B-M



**COST-EFFECTIVE**

**CCR-12, CCRB-12 SERIES**

# IP68 12 mm CRIMP CABLE ASSEMBLY

Mates with:  
CCP-12, CCPK-12

**SPECIFICATIONS**

For complete specifications see  
[www.samtec.com?CCR-12](http://www.samtec.com?CCR-12)

**Insulator Material:**

PBT

**Terminal Material:**

Phosphor Bronze

**Contact Material:**

BeCu

**Housing:**

-P: Black Nylon

-M: Zinc Alloy

**RoHS Compliant:**

Yes

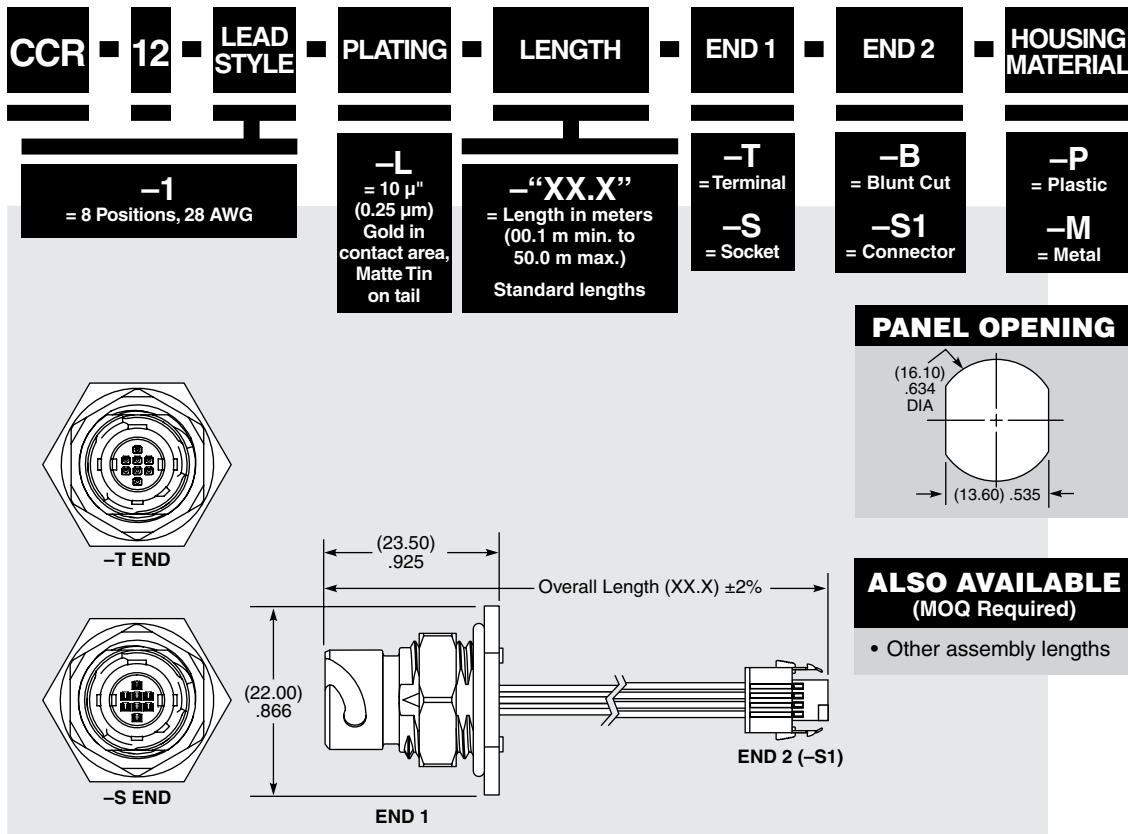
**COMPONENTS**

- For body, see [www.samtec.com?CCRK-12](http://www.samtec.com?CCRK-12)
- For contacts, see [www.samtec.com?T1M82-L](http://www.samtec.com?T1M82-L)  
[www.samtec.com?T1M82-R](http://www.samtec.com?T1M82-R)  
[www.samtec.com?CC81L](http://www.samtec.com?CC81L)  
[www.samtec.com?CC81R](http://www.samtec.com?CC81R)

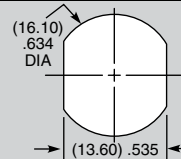
**DUST CAPS**

- DCA-ACR-12-M-X (Metal)
- DCA-ACR-12-P-X (Plastic)

Visit [sealedio.samtec.com](http://sealedio.samtec.com)  
for a complete list of sealed systems



**PANEL OPENING**



**ALSO AVAILABLE (MOQ Required)**

- Other assembly lengths

Mates with:  
CCP-12

**SPECIFICATIONS**

For complete specifications see  
[www.samtec.com?CCRB-12](http://www.samtec.com?CCRB-12)

**Insulator Material:**

PBT

**Terminal Material:**

Phosphor Bronze

**Housing:**

-P: Black Nylon

-M: Zinc Alloy

**RoHS Compliant:**

Yes

**OTHER SOLUTIONS**

- Solder cup version available
- For specifications, see  
[www.samtec.com?ACR-12](http://www.samtec.com?ACR-12)

