

ExaMAX[®] I/O

SHIELDED, HIGH-DENSITY I/O CABLE SYSTEM

(2.00 mm) .0787" PITCH

PAM 4

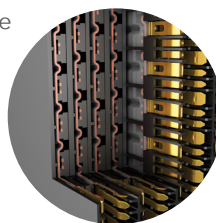
64
G b p s

FEATURES & BENEFITS

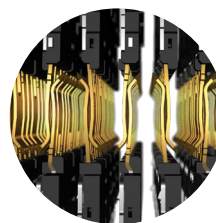
- Fully shielded external cable and cage for EMI protection
- Supports 64 Gbps PAM4 (32 Gbps NRZ) applications
- PCIe[®] 6.0/CXL[®] 3.2 capable
- Rugged pull latch for mating/unmating
- Single port cage designed for use with ExaMAX[®] right-angle board connector (EBTM-RA)
- 30 and 34 AWG Eye Speed[®] ultra low skew twinax
- 24 to 48 pairs (4 and 6 pairs; 6 and 8 columns)
- In Development: Cable-to-cable bulkhead panel connection for increased performance to 112 Gbps PAM4



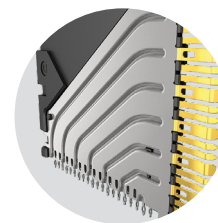
Cable to right-angle panel mount



Staggered differential pair design



Two reliable points of contact at all times



Wafer design reduces crosstalk

KEY SPECIFICATIONS (EBCE/EBTC)

CABLE	INSULATOR MATERIAL	CONTACT MATERIAL	PLATING	OPERATING TEMP RANGE	CURRENT RATING	VOLTAGE RATING
30 & 34 AWG ultra low skew twinax	LCP	Copper Alloy	Au over 50 μ " (1.27 μ m) Ni	-40 °C to +105 °C	0.5 A per pin max	133 VAC/188 VDC

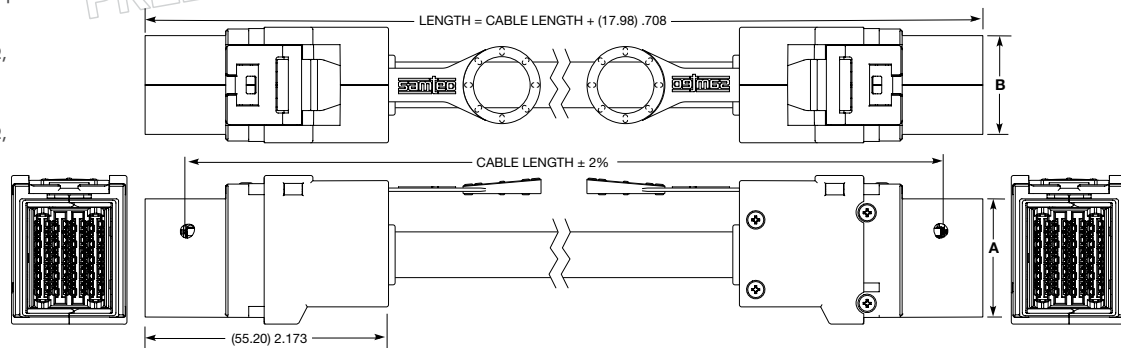
PCI-SIG[®], PCI Express[®] and the PCIe[®] design marks are registered trademarks and/or service marks of PCI-SIG.

(2.00 mm) .0787" PITCH • SHIELDED PANEL MOUNT CABLE

EBCE	GAUGE/ SIGNAL MAP	PAIRS PER COLUMN	COLUMNS	END 1 LATCH	END 1 PIN	CABLE LENGTH	END 2 LATCH	END 2 PIN
	-1 = 34 AWG 100 Ω, Tx to Rx Signal Map	-4 = 4 Pairs	-06, -08	-LU = Latch Up	-1 = Standard	- "XX" = Length in Inches 12" (304.8 mm) minimum	-LU = Latch Up	-1 = Standard
	-2 = 30 AWG 100 Ω, Tx to Rx Signal Map	-6 = 6 Pairs						
	-3 = 34 AWG 100 Ω, 1:1 Signal Map							
	-4 = 30 AWG 100 Ω, 1:1 Signal Map							

*-06
PRELIMINARY*

EBCE
Mates With:
EBTM-RA/EBTC



EBCE-X-4-08-LU-1-XX-LU-1 SHOWN

PAIRS	A	NO. OF COLUMNS	B
-4	(26.80) 1.055	-06	(18.40) .724
-6	(34.00) 1.339	-08	(22.40) .882

Notes:
Cable lengths longer than 40.00" (1 meter) are not supported with S.I. test data.

Some sizes, styles and options are non-standard, non-returnable.

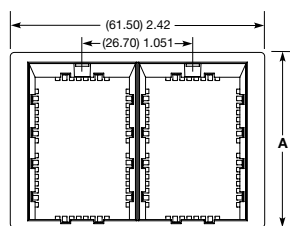
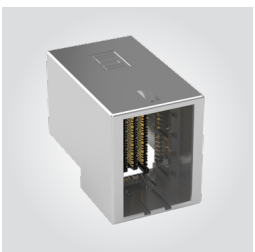
DIE CAST PANEL CAGE

View complete specifications at: samtec.com?EBCE

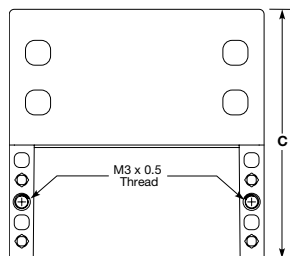
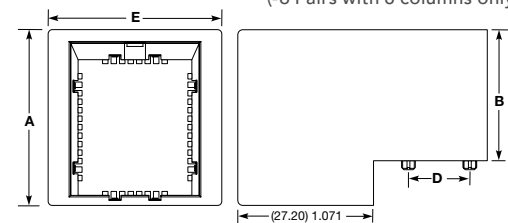
EBTC	PAIRS PER COLUMN	COLUMNS	PORT SIZE
	-4 = 4 Pairs	-06, -08	-1 = 1 Port
	-6 = 6 Pairs		-2 = 2 Ports (-6 Pairs with 8 columns only)

*-06
PRELIMINARY*

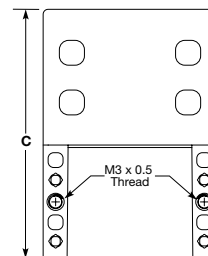
EBTC
Use With:
EBTM-RA, EBCE



PAIRS	A	B	C	D
-4	(35.20) 1.386	(26.25) 1.033	(50.00) 1.969	(12.30) .484
-6	(42.40) 1.669	(33.45) 1.317	(57.20) 2.252	(19.50) .768



EBTC-6-08-2 SHOWN



EBTC-4-08-1 SHOWN

NO. OF COLUMNS	E
-06	(30.80) 1.213
-08	(34.80) 1.370

Note:
Some sizes, styles and options are non-standard, non-returnable.

View complete specifications at: samtec.com?EBTC