

EBTF SERIES

(2,00 mm) .0787"

ExaMAX[®] RIGHT ANGLE RECEPTACLE

SPECIFICATIONS

For complete specifications and recommended PCB layouts see www.samtec.com?EBTF

Insulator Material:

Liquid Crystal Polymer

Contact Material:

Copper Alloy

Plating:

Sn or Au over

50 μ" (1,27 μm) Ni

Operating Temp Range:

-55°C to +85°C

RoHS Compliant:

Yes

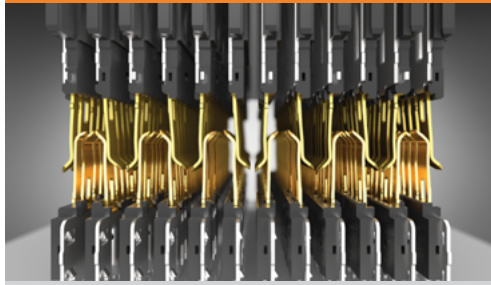
Processing:

Lead-Free Solderable:

Yes

Signal wafers incorporate a one-piece, embossed ground structure to improve crosstalk performance

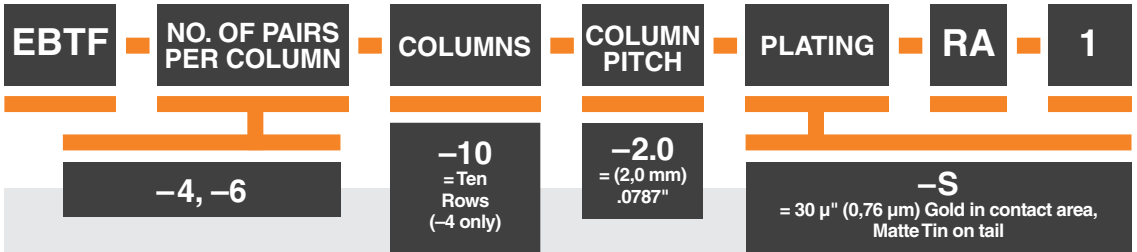
APPLICATION



The beam-on-beam contact interface creates two reliable points of contact at all times.



28+
Gbps



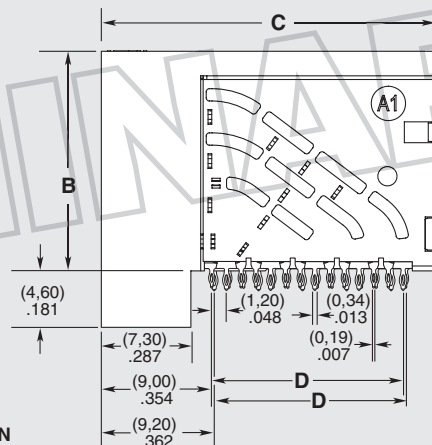
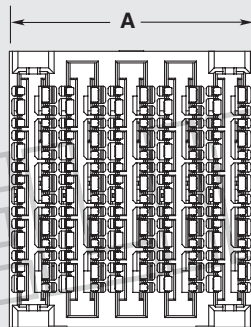
ALSO AVAILABLE (MOQ Required)

- Pin configurations
 - Guidance
 - Keying
 - End walls
- Contact Samtec.

NO. OF PAIRS PER COLUMN	A	B	C	D
-4	(19,90) .783	(17,90) .705	(28,00) 1.102	(15,60) .614
-6	(23,90) .941	(25,10) .988	(35,60) 1.402	(22,80) .898

IN DEVELOPMENT

- 3,00 mm pitch
- 40 Gbps



-4 SHOWN

Note: ExaMAX[®] is a trademark of FCI.

Note: Some lengths, styles and options are non-standard, non-returnable.