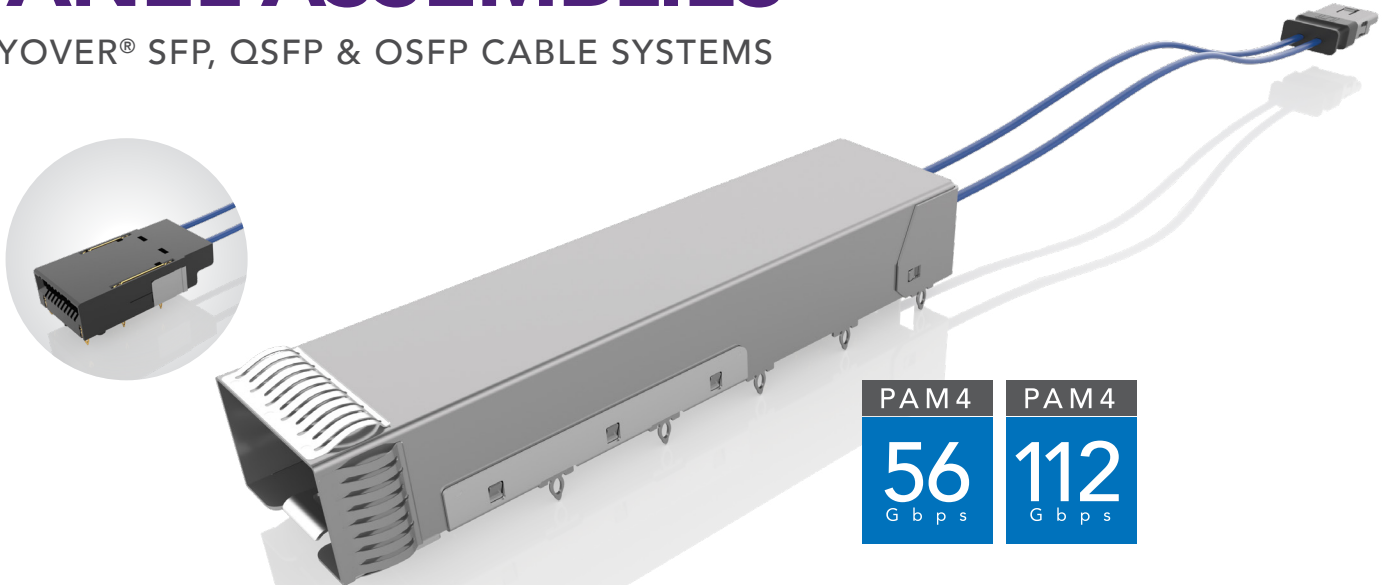


FLYOVER[®]

FLYOVER[®]

PANEL ASSEMBLIES

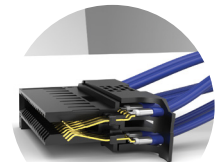
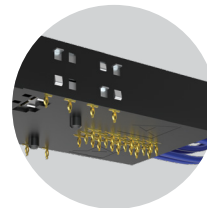
FLYOVER[®] SFP, QSFP & OSFP CABLE SYSTEMS



FEATURES & BENEFITS

Flyover[®] panel cable systems utilize Samtec Flyover[®] cable technology to route data above lossy PCB through Eye Speed[®] ultra low skew twinax cable, simplifying board layout and extending signal reach. The modular design enables optimized systems that improve heat management, increase signal integrity performance, build in scalability for future upgrades and reduce costs by creating a multifunction board.

- High-speed contacts directly soldered to Eye Speed[®] ultra low skew twinax
- Low-speed and power positions transmitted through press-fit contact tails
- Multiple end 2 (near-chip) options for design flexibility
- Cages and heatsinks available for optimized thermal performance
- SI Evaluation Kits available, visit [samtec.com/kits](https://www.samtec.com/kits)



FLYOVER[®] SFP SYSTEM

- 112 Gbps PAM4 performance
- Belly-to-belly capable for maximum density
- Accepts all MSA compliant SFP pluggable modules
- Eye Speed Thinax[™] ultra low skew twinax cable (< 3.5 ps/m)

FLYOVER[®] OSFP SYSTEM

- Up to 800 Gbps aggregate (112 Gbps PAM4)
- 8 Channels (x8 bidirectional, 16 differential pairs)
- Belly-to-belly capable for maximum density
- Eye Speed Thinax[™] ultra low skew twinax cable (< 3.5 ps/m)
- In development: Flyover[®] OSFP 224 Gbps solution (FOSFP-2)

FLYOVER[®] QSFP SYSTEM

- 4 Channels (x4 bidirectional, 8 differential pairs)
- Up to 400 Gbps aggregate (112 Gbps PAM4)
- Compatible with all MSA QSFP pluggables
- Eye Speed[®] ultra low skew twinax cable (< 3.5 ps/m)

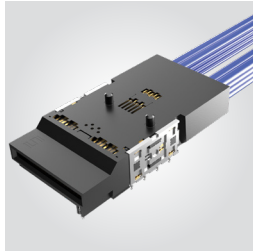
FLYOVER[®] QSFP DOUBLE DENSITY

- 8 Channels (x8 bidirectional, 16 differential pairs)
- FQSFP-DD: Up to 400 Gbps aggregate (56 Gbps PAM4)
- FQSFP-D8: Up to 800 Gbps aggregate (112 Gbps PAM4)
- Belly-to-belly capable for maximum density
- Backward compatible with QSFP modules
- Eye Speed[®] ultra low skew twinax or Eye Speed Thinax[™] twinax cable (< 3.5 ps/m)

800G FLYOVER® QSFP DOUBLE DENSITY CABLE ASSEMBLY

FQSFP	D8	CABLE TYPE	FOOTPRINT	CABLE LENGTH	END 2 OPTION
-------	----	------------	-----------	--------------	--------------

FQSFP-D8



PRESS-FIT TOOLING

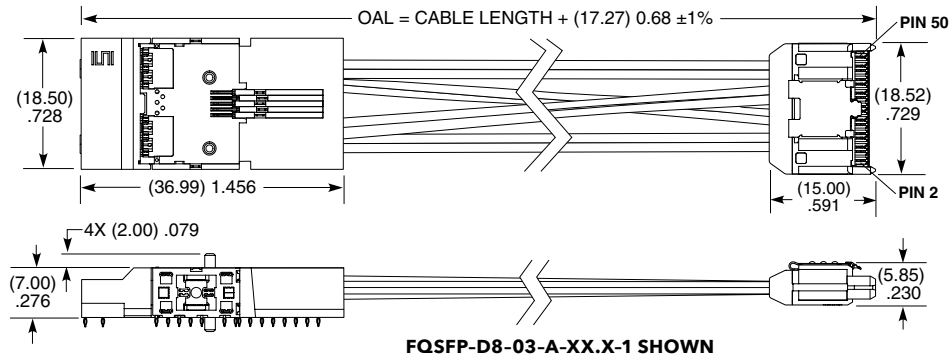
CAT-PF-FQSFP-DD-01
For more information, visit www.samtec.com/tooling

-03
= 34 AWG,
92 Ω ultra low skew
twinax cable, 16 pairs

-A
= Primary
-B
= Secondary
(Belly-to-Belly only)

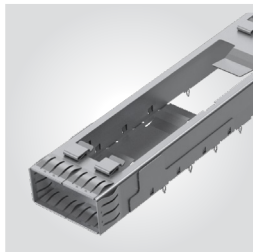
-"XX.X"
= Length in inches
06.0" (152.4 mm) min.
(-1 & -2 End 2 options)
07.0" (177.8 mm) min.
(-3 End 2 option)

-1
= ARC6-16
-2
= NVAC 2x2
-3
= CPX



QSFP	D8	STACK	NO. OF PORTS	OPTION	STYLE
------	----	-------	--------------	--------	-------

QSFP-D8



-1
= Single Stack
-2
= Two Ports

-1
= One Port

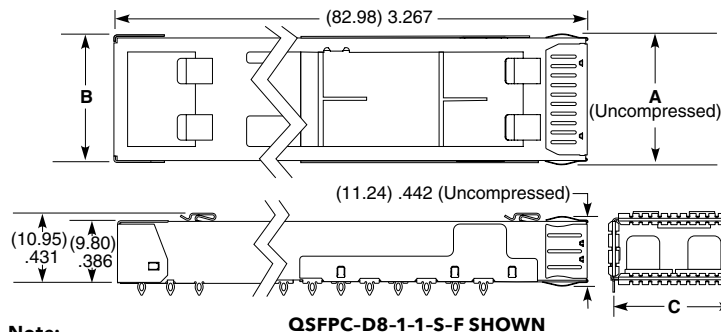
-S
= Spring Fingers

-F
= Flyover

PRESS-FIT TOOLING

CAT-PT-FQSFP-03-XX
For more information, visit www.samtec.com/tooling

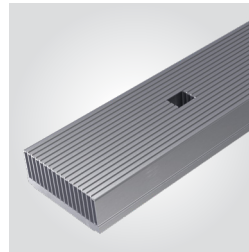
NO. OF PORTS	A	B	C
-1	(20.96) .825	(19.87) .782	(19.00) .748
-2	(39.96) 1.573	(38.87) 1.530	(38.00) 1.496



Note:
Some sizes, styles and options are non-standard, non-returnable.

HS-QSFP	D8	HEAT SINK HEIGHT
---------	----	------------------

HS-QSFP-D8



-1
= (6.20 mm) .244" height
-2
= (12.00 mm) .472" height

HEAT SINK HEIGHT	A
-1	(6.29) .248
-2	(12.00) .472

