



FLYOVER[®] SFP, QSFP & OSFP PANEL ASSEMBLIES

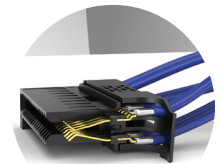
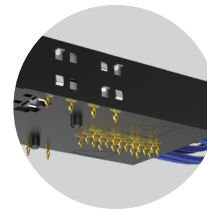


PAM4	PAM4	PAM4
56	112	224
Gbps	Gbps	Gbps

FEATURES & BENEFITS

Flyover[®] panel cable systems utilize Samtec Flyover[®] cable technology to route data above lossy PCB through Eye Speed[®] ultra low skew twinax cable, simplifying board layout and extending signal reach. The modular design enables optimized systems that improve heat management, increase signal integrity performance, build in scalability for future upgrades and reduce costs by creating a multifunction board.

- High-speed contacts directly terminated to Eye Speed[®] ultra low skew twinax
- Low-speed and power positions transmitted through press-fit contact tails
- Multiple end 2 (co-packaged and near-chip) options for design flexibility
- Cages and heat sinks available for optimized thermal performance
- SI Evaluation Kits available, visit [samtec.com/kits](https://www.samtec.com/kits)



FLYOVER[®] SFP SYSTEM

- 112 Gbps PAM4 performance
- Belly-to-belly capable for maximum density
- Accepts all MSA compliant SFP pluggable modules
- Eye Speed Thinax[™] ultra low skew twinax cable (3.5 ps/m max)

FLYOVER[®] OSFP SYSTEM

- Up to 1600 Gbps aggregate (224 Gbps PAM4)
- 8 Channels (x8 bidirectional, 16 differential pairs)
- Belly-to-belly capable for maximum density
- Eye Speed Thinax[™] ultra low skew twinax (3.5 ps/m max) or Eye Speed[®] hyper low skew twinax (1.75 ps/m max)

FLYOVER[®] QSFP SYSTEM

- 4 Channels (x4 bidirectional, 8 differential pairs)
- Up to 400 Gbps aggregate (112 Gbps PAM4)
- Compatible with all MSA QSFP pluggables
- Eye Speed[®] ultra low skew twinax cable (3.5 ps/m max)

FLYOVER[®] QSFP DOUBLE DENSITY

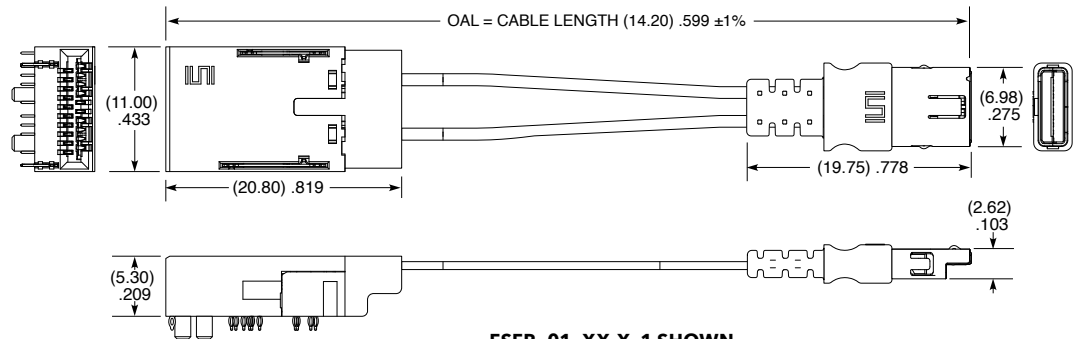
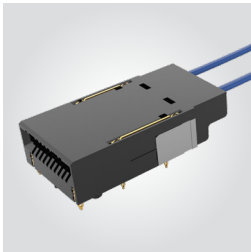
- 8 Channels (x8 bidirectional, 16 differential pairs)
- Up to 800 Gbps aggregate (112 Gbps PAM4)
- PCIe[®] 6.0/CXL[®] 3.2 capable
- Belly-to-belly capable for maximum density
- Backward compatible with QSFP and QSFP-DD modules
- Eye Speed[®] ultra low skew twinax or Eye Speed Thinax[™] twinax cable (3.5 ps/m max)

The PCIe[®] design mark is a registered trademark and/or service mark of PCI-SIG.

FLYOVER® SFP CABLE ASSEMBLY

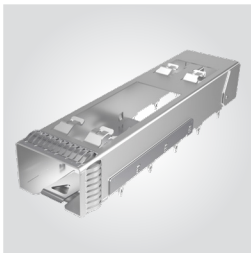
FSFP	CABLE TYPE	CABLE LENGTH	END 2 OPTION
	-01 = 34 AWG, 92 Ω Thinax™ ultra low skew twinax cable, 2 pairs	-“XX.X” = Length in inches 04.0" (101.6 mm) minimum	-1 = ARM6-02 (AcceleRate®)

FSFP

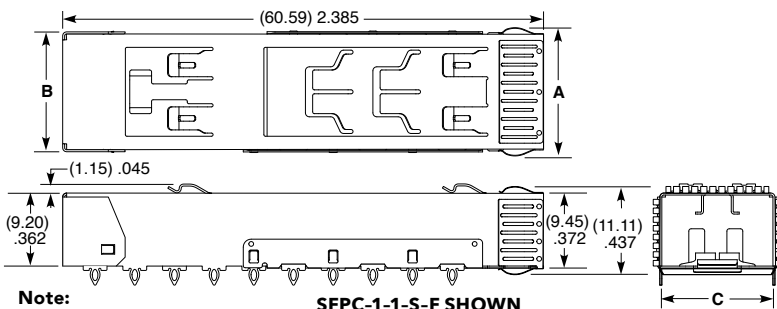


SFPC	STACK	NO. OF PORTS	EMI PANEL OPTION	OPTION	STYLE	HS-SFP	HEAT SINK STYLE	HEAT SINK HEIGHT	LIGHTPIPE
	-1 = Single High	-1 = One Port	-S = Spring Fingers	(Leave blank for no light pipes)	-F = Flyover®		-P1 = Pin (AL)	-01 = (7.50 mm) .295" height	(Leave blank for no light pipe)
		-2 = Two Ports		-LP = Light Pipe			-F1 = Front to Back Fin (AL)	-02 = (13.50 mm) .531" height (Not available with -F1)	-LP = Light Pipe
				-N = No Heat Sink, Closed Top					
				-H = Closed Top With Holes					
				-A = Absorber					

SFPC-F

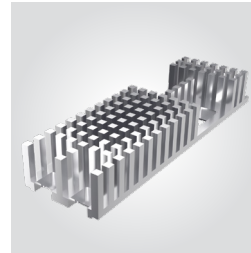


NO. OF PORTS	A	B	C
-1	(16.16) .636	(15.10) .594	(14.25) .561
-2	(30.41) 1.197	(29.35) 1.156	(28.50) 1.122



Note:
Some sizes, styles and options are non-standard, non-returnable.

HS-SFP



HEAT SINK HEIGHT	A
-01	(7.50) .295
-02	(13.50) .531

