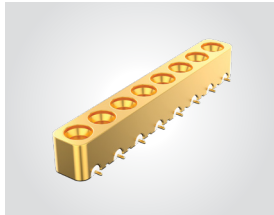


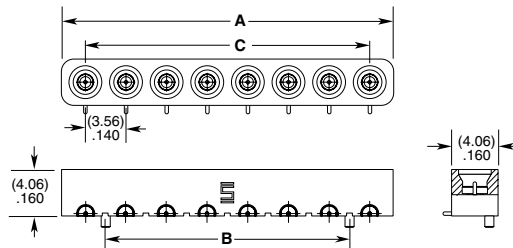
## SMPM TO 65 GHz

### SMPM Ganged Block: GPPB

Mates With:  
PRFIA



GPPB	GENDER	NO. OF ROWS	NO. OF POSITIONS	PLATING	ST	SM	CHANNEL PITCH
	<b>-PF</b> = Plug Full Detent  <b>-PS</b> = Plug Smooth Bore  <b>-PC</b> = Catcher's Mitt	-1	-02, -04, -06, -08, -10	<b>-EG</b> = 50 μ" (1.27 μm) heavy Gold center contact, 10 μ" (0.25 μm) Gold outer body			<b>-1N</b> = 3.56 mm (.140") Pitch



GPPB-PF-1-08-EG-ST-SM-1N SHOWN

NO. OF POSITIONS	A	B	C
-02	(7.62) .300	N/A	(3.56) .140
-04	(14.73) .580	(7.11) .280	(10.67) .420
-06	(21.84) .860	(14.22) .560	(17.78) .700
-08	(28.96) 1.14	(21.34) .840	(24.89) .980
-10	(36.07) 1.42	(28.45) 1.12	(32.00) 1.26

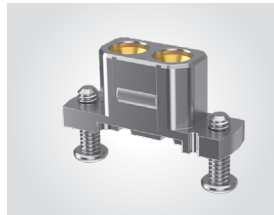
### ALSO AVAILABLE

(8.33 mm) .328" Pitch  
(5.08 mm) .200" Pitch  
Edge Mount termination  
Contact: [RFGroup@samtec.com](mailto:RFGroup@samtec.com)

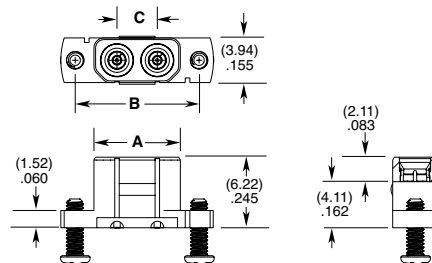
## DUAL PORT SOLDERLESS COMPRESSION MOUNT

### SMPM Ganged Block: GPPC

Mates With:  
GC47, GC86, PRFIA



GPPC	GENDER	1	2	PLATING	ORIENTATION	TERMINATION	PACKAGING
	<b>-PF</b> = Plug Full Detent  <b>-PS</b> = Plug Smooth Bore			<b>-EP</b> = 50 μ" (1.27 μm) heavy Gold center contact, Passivated outer body	<b>-ST</b> = Straight	<b>-CMM</b> = Compression Mount	Leave blank for individually bagged  <b>-B</b> = Full Tray (Multiples of 100 required)



GPPC-PX-1-2-EP-ST-CMM-X SHOWN

NO. OF POSITIONS	A	B	C
-02	(7.62) .300	(10.92) .430	(3.56) .140

Adaptors or visit [Samtec.com?PRFIA](http://Samtec.com?PRFIA)