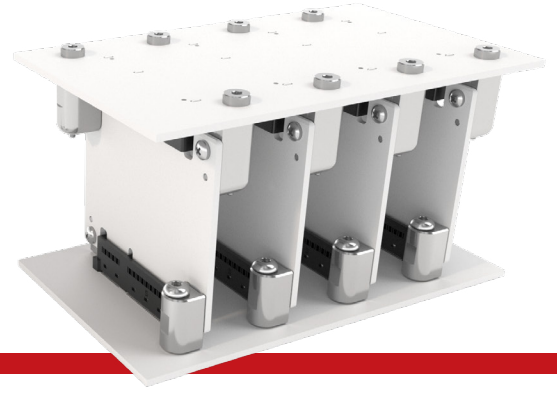


# RUGGED EDGE CARD HARDWARE



## SURE-EC SERIES

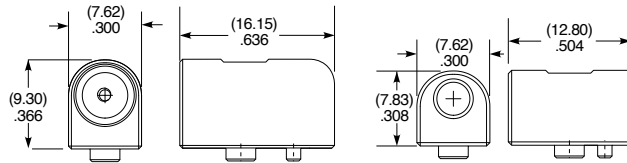
### SURE-EC

Use With:  
(1.60 mm) .062" -  
(3.18 mm) .125" thick PCB  
(card not included)

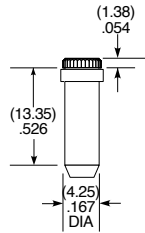
#### SPECIFICATIONS

**Material:**  
Screw & Guidepost:  
Stainless Steel  
Guidepost Receptacle & Base:  
Zinc Alloy

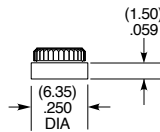
### SURE-EC



-02 SHOWN



-04 SHOWN



-05 SHOWN

### OPTIONS

- 01**  
= All Hardware (-02, -04, -05)  
(Edge Card Not Included)
- 02**  
= Edge Card Hardware  
(Edge Card Not Included)
- 03**  
= Top/Bottom PCB Hardware  
(-04 & -05 Hardware)
- 04**  
= Top PCB Hardware
- 05**  
= Bottom PCB Hardware

## H6RU SERIES

### H6RU

Use With:  
HSEC6, SURE-EC-03

#### SPECIFICATIONS

**Material:**  
Screw: Stainless Steel  
Hardware: Zinc Alloy

### H6RU - NO. OF POSITIONS - DV - STACK HEIGHT - DP - 085

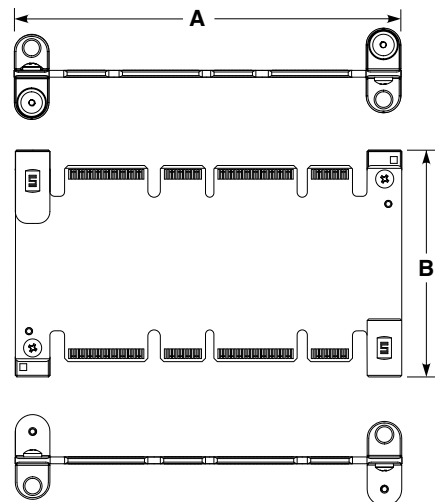
(Per row)

- 028
- 084

- 025
- 060

NO OF POSITIONS	A
-028	(42.28) 1.665
-084	(85.28) 3.357

STACK HEIGHT	B
-025	(25.00) .984
-060	(60.00) 2.362



**Notes:**  
Some sizes, styles and options are non-standard, non-returnable.