

**(0.60 mm) .024" PITCH • RIGHT-ANGLE EDGE CARD ASSEMBLY**

HSEC6	NO. OF POSITIONS	CARD THICKNESS	PLATING OPTION	RA	OPTION	WT	"X"R
	-028, -042, -070 (per row)	-01 = (1.60 mm) .062" thick card	-S = 30 μ" (0.76 μm) Gold on contact area, Matte Tin on tail		Leave blank for no shield  -S = Shield		-TR = Tape & Reel  -FR = Full Reel Tape & Reel (must order max. quantity per reel; contact Samtec for quantity breaks)

**HSEC6-RA**

**Card Mates:**  
(1.60 mm)  
.062" thick card

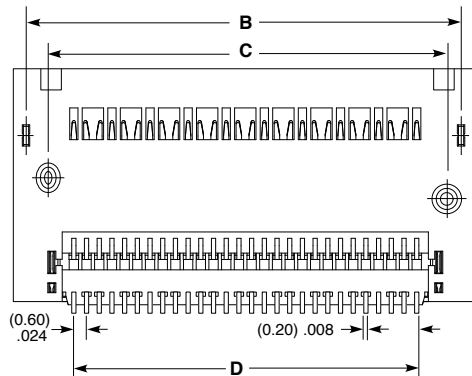
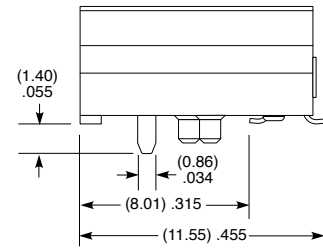
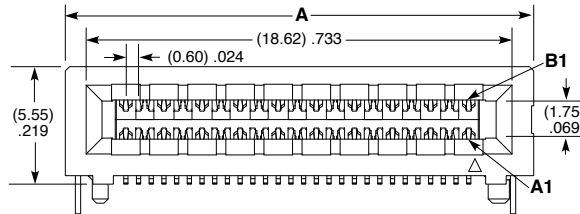
**Cable Mates:**  
GC6



NO. OF POSITIONS	A	B	C	D
-028	(22.13) .871	(19.880) .7827	(18.830) .7413	(16.200) .6378
-042	(33.85) 1.333	(31.600) 1.2441	(30.545) 1.2026	(28.010) 1.1028
-070	(55.20) 2.173	(52.640) 2.0724	(51.965) 2.0459	(49.120) 1.9339

**SPECIFICATIONS**

- Insulator Material:** Black Liquid Crystal Polymer
- Contact Material:** Copper Alloy
- Shield:** Phosphor Bronze
- Plating:** Au or Sn over 50 μ" (1.27 μm) Ni
- Operating Temp Range:** -55 °C to +125 °C
- Current Rating:** Testing Now!
- Voltage Rating:** Testing Now!



**HSEC6-028-01-X-RA-WT-XR SHOWN**

PCI-SIG®, PCI Express® and the PCIe® design marks are registered trademarks and/or service marks of PCI-SIG.

**Note:** Some lengths, styles and options are non-standard, non-returnable.

View complete specifications at: [samtec.com?HSEC6-RA](http://samtec.com?HSEC6-RA)