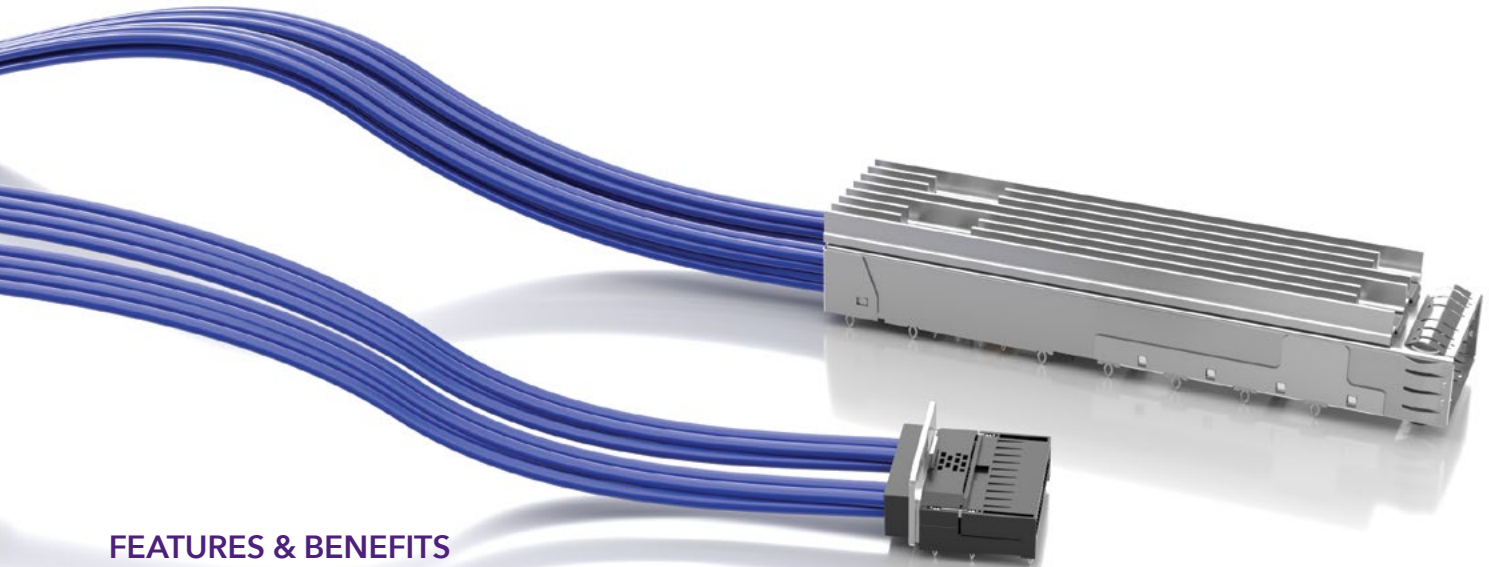


FLYOVER® QSFP CABLE ASSEMBLIES



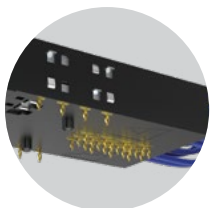
FEATURES & BENEFITS

QSFP, QSFP-DD and QSFP-D8 systems utilize Samtec Flyover® technology to route data above lossy PCB, simplifying board layout and extending signal reach. The modular design enables optimized systems that improve heat management, increase signal integrity performance, build in scalability for future upgrades and reduce costs by creating a multifunction board.

NRZ	PAM4
56 Gbps	112 Gbps

FLYOVER® QSFP SYSTEM

- 4 Channels (x4 bidirectional, 8 differential pairs)
- Up to 400 Gbps aggregate (112 Gbps PAM4)
- Compatible with all MSA QSFP pluggables
- Multiple heat sink options available for optimal dissipation
- Eye Speed® 30 or 34 AWG twinax cable
- Multiple end 2 options for design flexibility
- Evaluation Kits available (REF-205303-X.XX-XX), visit samtec.com/kits



Localized press-fit control and power contacts eliminate the need for a secondary cable and connector



High-speed contacts directly soldered to Eye Speed® ultra low skew twinax

FLYOVER® QSFP DOUBLE DENSITY

- 8 Channels (x8 bidirectional, 16 differential pairs)
- Up to 400 Gbps aggregate (56 Gbps PAM4)
- Belly-to-belly mating for maximum density
- Backward compatible with QSFP modules
- Multiple heat sink options available for optimal dissipation
- Variety of end 2 options
- Evaluation Kits available (REF-205605-X.XX-XX and REF-203424-X.XX-XX), visit samtec.com/kits

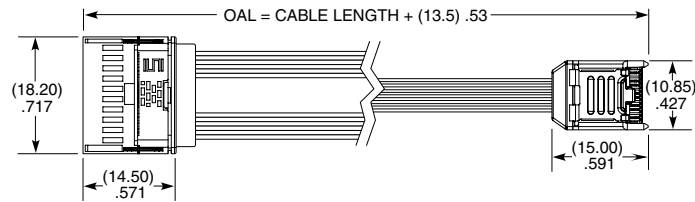
800G FLYOVER® DOUBLE DENSITY

- 8 Channels (x8 bidirectional, 16 differential pairs)
- Up to 800 Gbps aggregate (112 Gbps PAM4)
- Belly-to-belly mating for maximum density
- Backward compatible with QSFP & QSFP-DD modules
- Multiple heat sink options available for optimal dissipation
- Variety of end 2 options

FLYOVER® QSFP CABLE ASSEMBLY

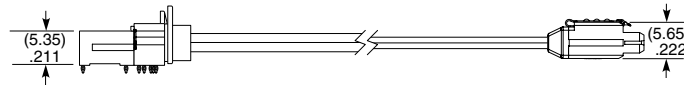
FQSFP	LEAD STYLE	CABLE LENGTH	PLATING	CONTACT TYPE	END OPTION
	-01 = 10 Low-Speed, 8 Pairs High-Speed	-"XX.X" = Length in inches 04.0" (101.6 mm) minimum	-L = 10 μ" (0.25 μm) Gold over 50 μ" (1.27 μm) Ni on contact area, Matte Tin on tail	-PF = Press-fit	-3 = ECUE -4 = ARC6-8

FQSFP



PRESS-FIT TOOLING

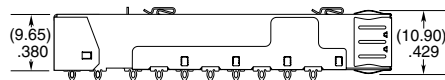
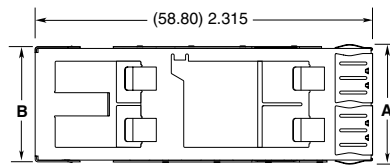
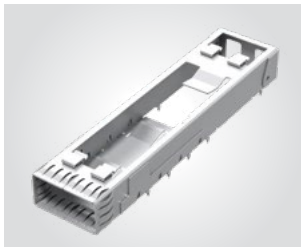
CAT-PT-FQSFP-01
For more information, visit
www.samtec.com/tooling



FQSFP-01-XX.X-L-PF-4 SHOWN

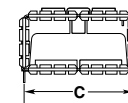
QSFCP	CAGE OPTION	NUMBER OF PORTS	EMI PANEL OPTION	OPTION	FLYOVER
	-1 = Single Stack	-1 = One Port -2 = Two Ports -4 = Four Ports	-S = Spring Fingers	(Leave blank for no Light Pipe) -LP = Light Pipe (1 & 4 ports only) -N = No heat sink closed top (Not available with -LP)	(Leave blank for no flyover) -F = Flyover

QSFCP



QSFCP-1-1-S-F SHOWN

NO. OF PORTS	A	B	C
-1	(20.62) .812	(19.85) .781	(19.00) .748
-2	(39.62) 1.560	(38.85) 1.530	(38.00) 1.496
-4	(77.62) 3.056	(76.85) 3.026	(76.00) 2.992



PRESS-FIT TOOLING

CAT-PT-FQSFP-03-XX
For more information, visit
www.samtec.com/tooling

Notes:
Some sizes, styles and
options are non-standard,
non-returnable.

HEAT SINKS

PART NUMBER	HEAT SINK HEIGHT
HS-QSFP-P1-01	(4.20 mm) .165"
HS-QSFP-P1-02	(6.50 mm) .256"
HS-QSFP-P1-03	(13.50 mm) .531"
HS-QSFP-P1-04	(1.50 mm) .059"

For Light Pipe, add -LP to the end of part number.
View complete specifications at samtec.com?HS-QSFP

LIGHT PIPES

PART NUMBER	NO. OF PORTS
LP-FQSFP-01	1 pipe
LP-FQSFP-02	2 pipes
LP-FQSFP-04	4 pipes

View complete specifications at samtec.com?LP-FQSFP

View complete specifications at: samtec.com?FQSFP & samtec.com?QSFCP