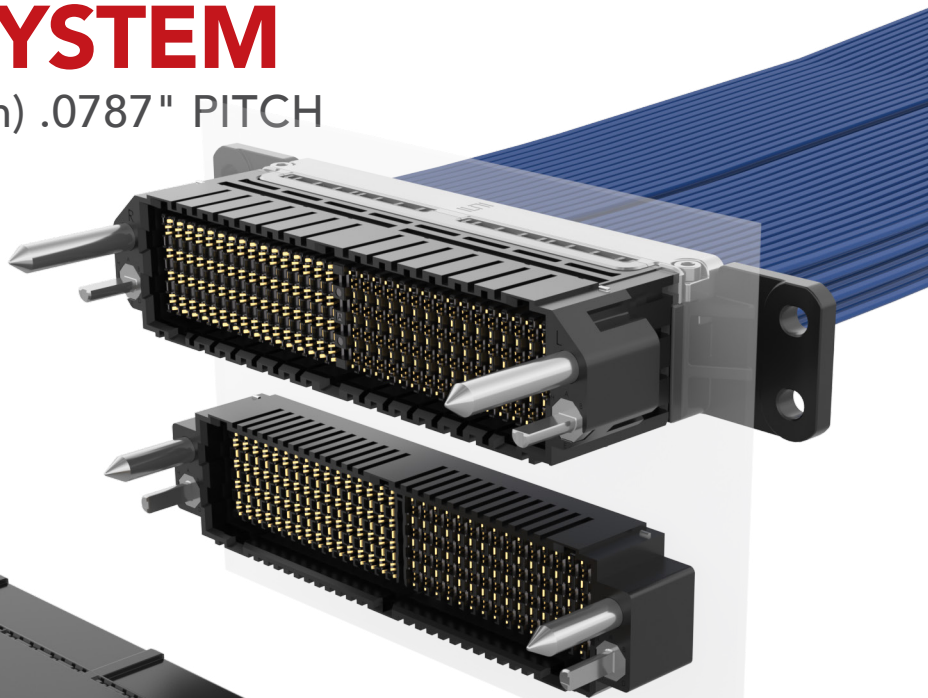


MICRO RUGGED BACKPLANE SYSTEM

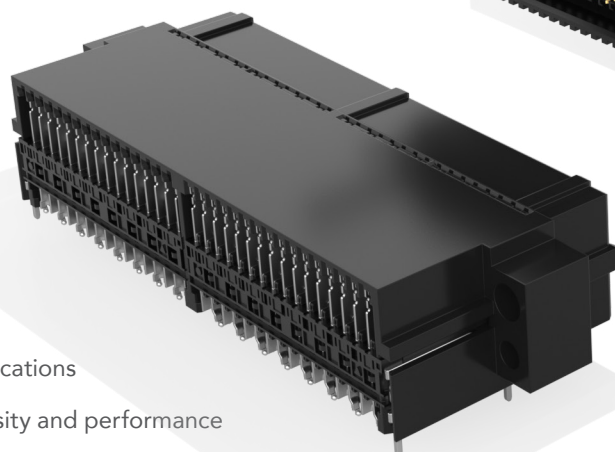
(0.90 mm) .0354" x (2.00 mm) .0787" PITCH

PAM4
128
Gbps



FEATURES & BENEFITS

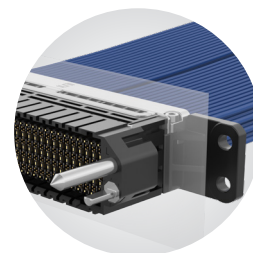
- Ultra-high density with up to 128 DPs in a single connector
- PCIe® 7.0 capable
- Designed for blind mate applications
- Surface mount for better density and performance
- Innovative wafer design eliminates intra-pair skew
- Configurable signal banks for design flexibility
- Offset footprint for optimal signal integrity performance
- Large continuous ground blades between and surrounding the differential pairs eliminates resonances
- Optional guidance and keying
- Standard weld tabs for a secure connection to the board



Ultra-high density; single-ended or differential pair wafers



Precision insert molded contact system with 2.50 mm wiper



Flyover® cable assembly for extended signal reach

KEY SPECIFICATIONS

SERIES	INSULATOR MATERIAL	CONTACT MATERIAL	PLATING	OPERATING TEMP RANGE	CURRENT RATING	VOLTAGE RATING	LEAD-FREE SOLDERABLE
NVBM/NVBF	Black LCP	Copper Alloy	Au or Sn over 50 μ" (1.27 μm) Ni	Testing Now!	Testing Now!	Testing Now!	Yes
NVCF/NVCM	Black LCP	Copper Alloy	Au or Sn over 50 μ" (1.27 μm) Ni	Testing Now!	Testing Now!	Testing Now!	No

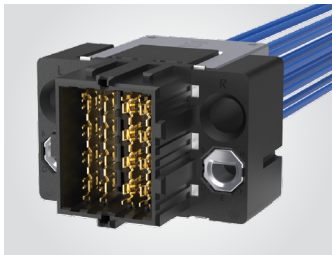
PCI-SIG®, PCI Express® and the PCIe® design marks are registered trademarks and/or service marks of PCI-SIG

0.90 mm x 2.00 mm PITCH • MICRO RUGGED BACKPLANE CABLE

NVCM	SIGNAL TYPE	NO. OF ROWS	R	CABLE STYLE	CABLE LENGTH	END 1 GUIDANCE	END 1 KEYING	END 2 GUIDANCE	END 2 KEYING	PIN OUT
	-DP = Differential Twinax pairs (4 pairs per row)	-04, -16, -32		-3 = 34 AWG 92 Ω ultra low skew Thinax™	-XX = Length in inches 10" (254 mm) minimum	-0 = No Guidance -1 = Left Guidance -2 = Right Guidance -3 = Both	(Only available with Guidance) -N = No Key -A thru -H = Position of flat on Key	-0 = No Guidance -1 = Left Guidance -2 = Right Guidance -3 = Both	(Only available with Guidance) -N = No Key -A thru -H = Position of flat on Key (See Table)	-1 = Pin A01 to Pin A01 -2 = Pin A01 to Pin R01 -3 = Pin A01 to Pin AN (N equals last row)

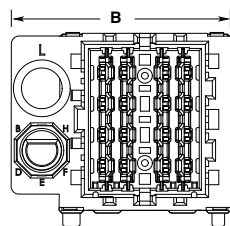
PRELIMINARY

NVCM
Board Mates:
NVBF-VT
Cable Mates:
NVCF

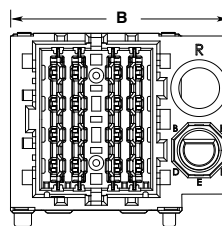


KEYING								
-L / -R / -B	-A	-B	-C	-D	-E	-F	-G	-H

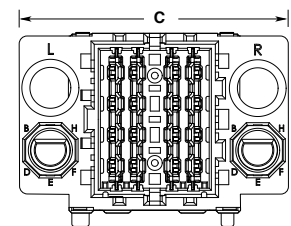
NO. OF ROWS	A	B	C
-04	(16.00) 0.630	(20.50) .807	(25.00) .984
-16	(40.00) 1.575	(44.50) 1.752	(49.00) 1.929
-32	(72.00) 2.835	(76.50) 3.012	(81.00) 3.189



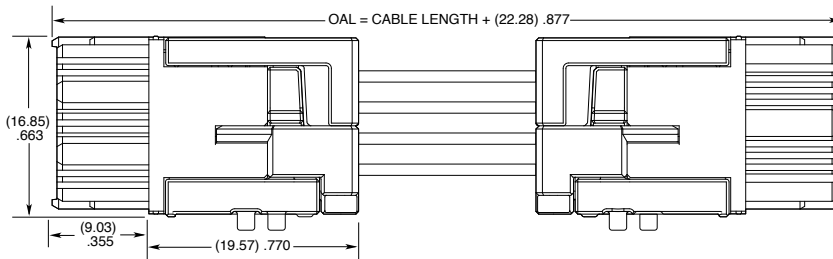
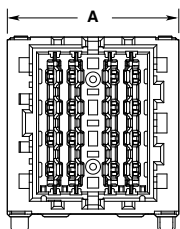
-1 GUIDANCE



-2 GUIDANCE



-3 GUIDANCE



NVCM-DP-04-R-3-XX-0-N-0-N-X SHOWN

Notes:
Cable lengths longer than 1 meter (40.00") are not supported with S.I. test data.

Maximum standard cable length is 99 inches. For lengths greater than 99 inches contact HDR@samtec.com.

Some sizes, styles and options are non-standard, non-returnable.

View complete specifications at: samtec.com?NVCM