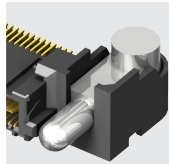
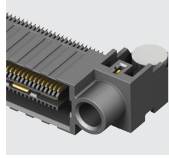


## Q2™ HIGH-SPEED GROUND PLANE CONNECTORS

### (0.635 mm) .025" PITCH RIGHT-ANGLE GROUND PLANE HEADERS & SOCKETS



**QMS-RA**  
Board Mates:  
QFS

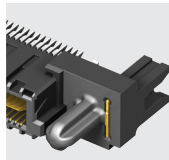


**QFS-RA**  
Board Mates:  
QMS

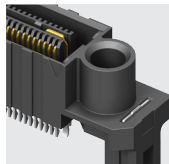
SERIES	PINS PER ROW NO. OF PAIRS	01	PLATING	TYPE	RA	MG	OTHER OPTION	PACKAGING
<b>QMS</b> Header	<b>-026, -052, -078</b> -D = (52 total pins per bank)		<b>-SL</b> = 10 μ" (0.25 μm) Gold on Signal Pins and Ground Plane, Matte Tin on tails	<b>-D</b> = Single- Ended  <b>-D-DP</b> = Differential Pair		<b>-MG</b> = Metal Guide Post (QMS only)	<b>-K</b> = Polyimide film Pick & Place Pad	Leave blank for Tray Packaging  <b>-TR</b> = Tape & Reel (-016, -026, -032 & -052 only)  <b>-FR</b> = Full Reel Tape & Reel (must order max. quantity per reel; contact Samtec for quantity breaks) (-016, -026, -032 & -052 only)
<b>QFS</b> Socket	<b>-016, -032, -048</b> -D-DP = (16 pairs per bank)							

View complete specifications at: [samtec.com?QMS-RA](http://samtec.com?QMS-RA) or [samtec.com?QFS-RA](http://samtec.com?QFS-RA)

### (0.635 mm) .025" PITCH EDGE MOUNT GROUND PLANE HEADERS & SOCKETS



**QMS-EM**  
Board Mates:  
QFS



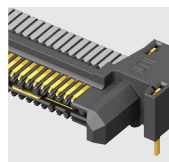
**QFS-EM**  
Board Mates:  
QMS

SERIES	POSITIONS PER ROW	01	PLATING	D	EM2	END OPTION	PACKAGING
<b>QMS</b> Header	<b>-026, -052, -078</b>		<b>-SL</b> = 10 μ" (0.25 μm) Gold on Signal Pins and Ground Plane, Matte Tin on tails			<b>-PC4</b> = 4 Power Pins per end (QMS only)	Leave blank for Tray Packaging  <b>-TR</b> = Tape & Reel (-026 & -052 only)  <b>-FR</b> = Full Reel Tape & Reel (must order max. quantity per reel; contact Samtec for quantity breaks) (-026 & -052 only)
<b>QFS</b> Socket							

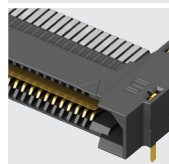
View complete specifications at: [samtec.com?QMS-EM](http://samtec.com?QMS-EM) or [samtec.com?QFS-EM](http://samtec.com?QFS-EM)

## Q RATE® SLIM BODY HIGH-SPEED GROUND PLANE CONNECTORS

### (0.80 mm) .0315" PITCH RIGHT-ANGLE SLIM BODY GROUND PLANE HEADERS & SOCKETS



**QRM8-RA**  
Board Mates:  
QRF8  
(-GP Required)



**QRF8-RA**  
Board Mates:  
QRM8  
(-GP Required)

SERIES	POSITIONS PER ROW	01	PLATING	RA	GP	OPTION	PACKAGING
<b>QRM8</b> Header	<b>-026, -052, -078</b> (52 total positions per bank)		<b>-L</b> = 10 μ" (0.25 μm) Gold contact, Matte Tin on tails		<b>-GP</b> = Guide Post (Requires -GP on mating connector)	<b>-K</b> = (7.00 mm) .275" DIA Polyimide film Pick & Place Pad (-052 only)	Leave blank for Tray Packaging  <b>-TR</b> = Tape & Reel (-026, -052 only)  <b>-FR</b> = Full Reel Tape & Reel (must order max. quantity per reel; contact Samtec for quantity breaks) (-026 & -052 only)
<b>QRF8</b> Socket							

**Note:**  
Some lengths, styles and options  
are non-standard, non-returnable.

View complete specifications at: [samtec.com?QRM8-RA](http://samtec.com?QRM8-RA) or [samtec.com?QRF8-RA](http://samtec.com?QRF8-RA)