

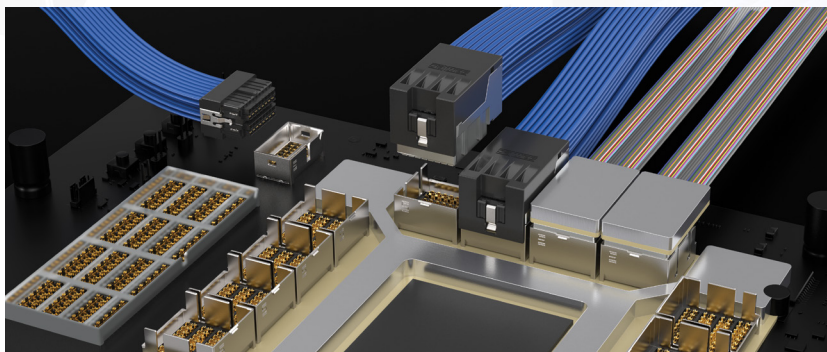
SI-FLY[®] HD

224 GBPS PAM4, CO-PACKAGED AND NEAR-CHIP SYSTEMS



FEATURES & BENEFITS

- High-density 224 Gbps PAM4 co-packaged and near-chip (ASIC adjacent) cable systems
- Co-packaged offers the lowest loss signal transmission from the package to the front panel or backplane while providing the highest density
- PCIe[®] 7.0 capable
- Eye Speed[®] hyper low skew twinax cable technology supports 224G signaling with an industry leading 1.75 ps/m max intra-pair skew
- Placement of Flyover[®] cable solutions on, or near, the chip package improves transmission line density and extends signal reach in high-performance applications
- Co-packaged signal density: 170 differential pairs per square inch
- Near-chip signal density: 64 differential pairs per square inch
- Routes an extremely high number of transmission lines from one PCB to the next
- Surface mount reflow technology to the substrate (co-packaged) or PCB (near-chip)



CPX: Electrically pluggable co-packaged copper and optic high-performance, high-density interconnects on a 95 mm x 95 mm or smaller substrate (SFCC, SFCC, Optics). Contact HDR@samtec.com for more details.

KEY SPECIFICATIONS

SERIES	CABLE	SIGNAL ROUTING	INSULATOR MATERIAL	CONTACT MATERIAL	PLATING	OPERATING TEMP RANGE	CURRENT RATING	VOLTAGE RATING
SFCC/SFCM SFNC/SFNM	32 AWG hyper low skew twinax	92 Ω Differential	Black LCP	Copper Alloy	Au or Sn over 50 μ" (1.27 μm) Ni	Testing Now!	Testing Now!	Testing Now!

CO-PACKAGED CABLE & CONNECTOR

SFCC	STYLE	1	NO. OF PAIRS PER ROW	NO. OF ROWS	RA	CABLE LENGTH	END 2 OPTION	WIRING OPTION
------	-------	---	----------------------	-------------	----	--------------	--------------	---------------

-DP
= Differential
Twinax pairs
only

-08
= Eight

-04
= Four
Rows

-06
= Six Rows

-08
= Eight
Rows

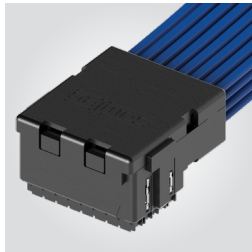
-"XX.X"
= Length in Inches
08.0" (203.2 mm)
minimum

-A
= SFCC

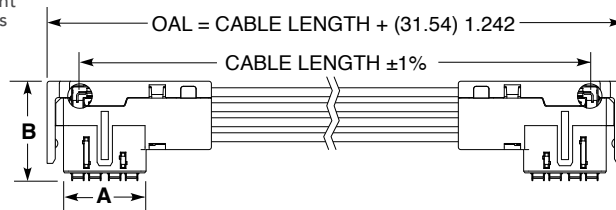
-1
= Pin A01 to Pin A25

-2
= Pin A01 to Pin X01

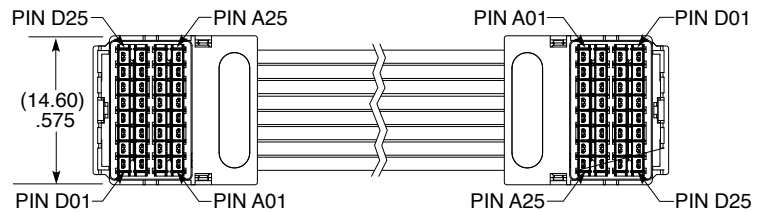
SFCC
Board Mates:
SFCM



PRELIMINARY



NO. OF ROWS	A	B
-04	(8.10) .319	(10.20) .402
-06	(11.70) .461	(14.69) .578
-08	(15.30) .602	(17.61) .693



SFCC-DP-1-08-04-RA-XX.X-A-1

Notes:
Cable lengths longer than
118" (3 meter) are not
supported with S.I. test data.

Some lengths, styles and
options are non-standard,
non-returnable.

View complete specifications at: samtec.com?SFCC

SFCM	STYLE	NO. OF PAIRS PER ROW	NO. OF ROWS	01	VT	PLATING OPTION	PACKAGING
------	-------	----------------------	-------------	----	----	----------------	-----------

-DP
= Differential
Twinax pairs only

-08
= Eight

-04
= Four Rows

-06
= Six Rows

-08
= Eight Rows

-S
= 30 μ" (0.76 μm)
Gold in contact area,
Tin on tails

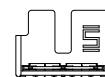
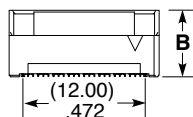
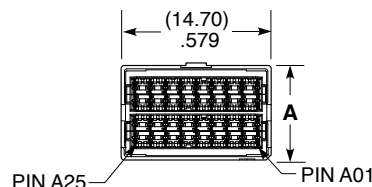
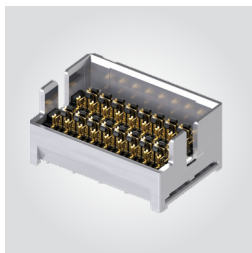
Leave blank for tray
packaging

-TR
= Tape & Reel

-FR
= Full Reel
Tape & Reel
(must order max.
quantity per reel;
contact Samtec for
quantity breaks)

PRELIMINARY

SFCM
Cable Mates:
SFCC



NO. OF ROWS	A	B	C	D
-04	(9.26) .365	(6.55) .258	(7.05) .278	(10.16) .400
-06	(12.86) .506	(7.52) .296	(8.02) .316	(13.76) .542
-08	(16.46) .648	(8.55) .337	(9.05) .356	(17.36) .683

SFCM-DP-08-04-01-VT-S

Note:
Some sizes, styles and
options are non-standard,
non-returnable.

View complete specifications at: samtec.com?SFCM