

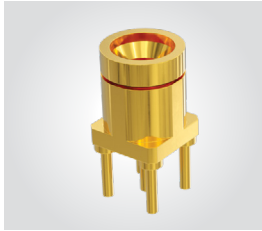
SMMP TO 65 GHz

SMMP Board Connectors

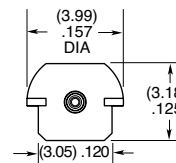
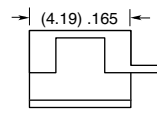
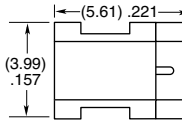
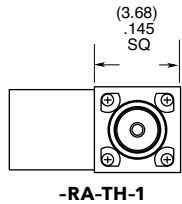
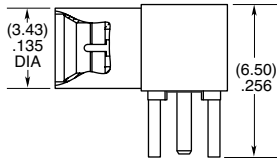
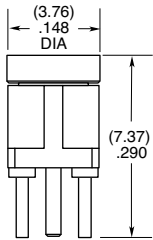
SMMP-SM, SMMP-TH, SMMP-RA, SMMP-MT, SMMP-EM

Cable Mates:

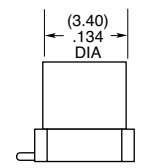
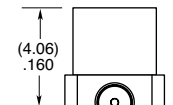
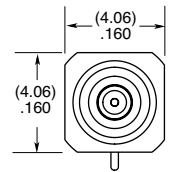
RF047-A, RF086, RF23C



SMMP	GENDER	TYPE	PLATING	ORIENTATION	TERMINATION	OPTION
	-PF = Full Detent	-P = PCB Mount	-HG = 30 μ" (0.76 μm) Gold center contact, 10 μ" (0.25 μm) Gold outer contact (-ST only)	-ST = Straight	-EM = Drop-in Edge Mount (-ST only)	-1 = Standard
	-PS = Smooth Bore		-HF = 30 μ" (0.76 μm) Gold center contact, 3 μ" (0.08 μm) Gold outer contact (-RA only)	-RA = Right-angle (-TH required)	-TH = Through-hole	-2 = Reverse Mount (-EE and -SM only; see website for print)
	-PC = Catcher's Mitt (-ST-TH, -ST-MT & -ST-SM only)		-EG = 50 μ" (1.27 μm) Gold center contact, 10 μ" (0.25 μm) Gold outer body (-MT & -SM only)		-SM = Surface Mount (-ST only)	
			-EE = 50 μ" (1.27 μm) extra heavy Gold center contact and outer body (SM-2 only)		-MT = Mixed Technology (-ST only)	



-ST-EM-1



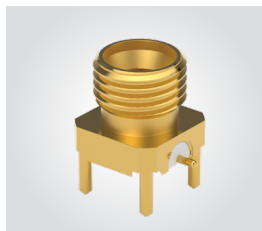
SMMP THREADED TO 65 GHz

SMMPMT Board Connectors

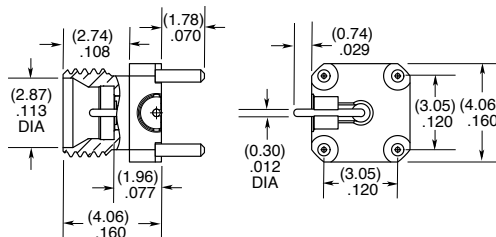
SMMPMT-MT

Cable Mates:

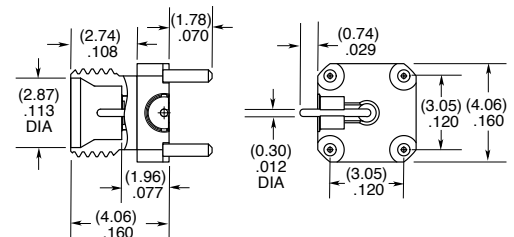
RF047-A, RF086, RF23C



SMMPMT	GENDER	TYPE	PLATING	ORIENTATION	TERMINATION	OPTION
	-PF = Full Detent	-P = PCB Mount	-EG = 50 μ" (1.27 μm) Gold center contact, 10 μ" (0.25 μm) Gold outer body	-ST = Straight	-MT = Mixed Technology	-1 = Standard
	-PS = Smooth Bore					



SMMPMT-PF-P-EG-ST-MT-1



SMMPMT-PS-P-EG-ST-MT-1