

(2.00 mm) .0787"

ST2M-105-L-D-SM-2

ST2M-105-L-D-RA-1

ST2M-105-S-D-TH-1

**ST2M SERIES**

# TERMINAL SHIELDED ASSEMBLY

## SPECIFICATIONS

For complete specifications and recommended PCB layouts see [www.samtec.com?ST2M](http://www.samtec.com?ST2M)

**Insulator Material:**  
Vectra E130i

**Terminal Material:**  
Phosphor Bronze

**Shield Material:**  
Phosphor Bronze

**Plating:**  
Sn or Au over

50 μ" (1.27 μm) Ni

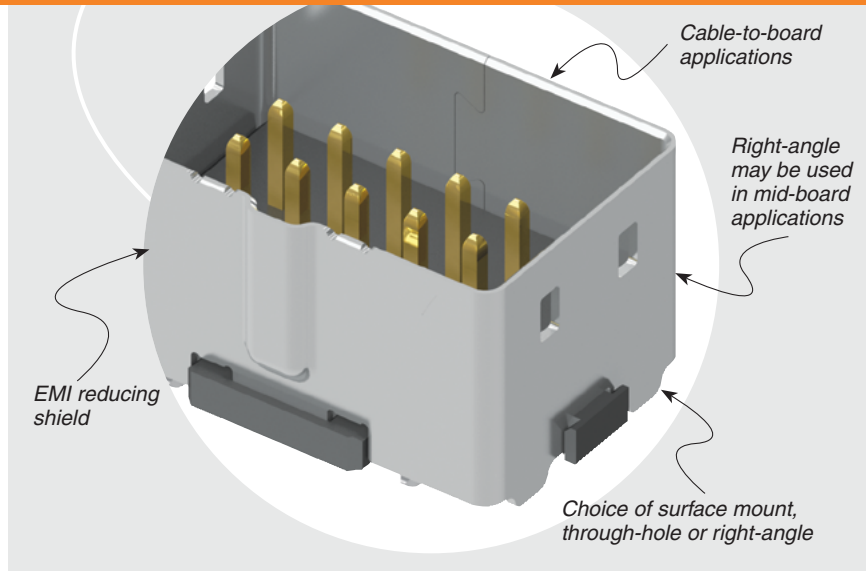
**Current Rating:**  
Testing Now!

**Voltage Rating:**  
Testing Now!

**Operating Temp Range:**  
Testing Now!

**EMI Reduction:**  
Testing Now!

**Mates With:**  
SS2SD



## PROCESSING

**Lead-Free Solderable:**  
Yes  
**SMT Lead Coplanarity:**  
(0.10 mm) .004" max

## ALSO AVAILABLE (MOQ Required)

- Other polarization options available
- Other sizes available

ST2M	1	NO. OF POSITIONS	PLATING OPTION	D	LEAD STYLE	SHIELD OPTION	POL. OPTION	OPTION
------	---	------------------	----------------	---	------------	---------------	-------------	--------

**05**  
(Per Row)

**-L**  
= 10 μ" (0.25 μm)  
Gold in contact area,  
Tin on tail

**-S**  
= 30 μ" (0.76 μm)  
Gold in contact area,  
Tin on tail

**-SM**  
= Surface mount

**-TH**  
= Through-hole

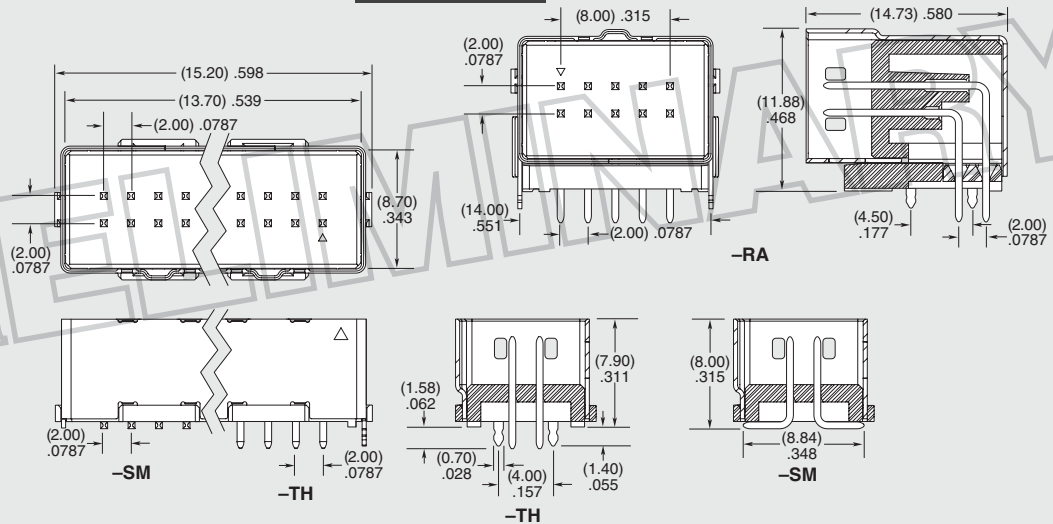
**-RA**  
= Right-angle

**-1**  
= Through-hole

**-2**  
= Surface mount (-SM only)

**-1**  
= Polarization option  
(Other polarization options available)

**-P**  
= Pick & Place Pad



**Note:**  
Some lengths, styles and options are non-standard, non-returnable.

Due to technical progress, all designs, specifications and components are subject to change without notice.

[WWW.SAMTEC.COM](http://WWW.SAMTEC.COM)

All parts within this catalog are built to Samtec's specifications.  
Customer specific requirements must be approved by Samtec and identified in a Samtec customer-specific drawing to apply.