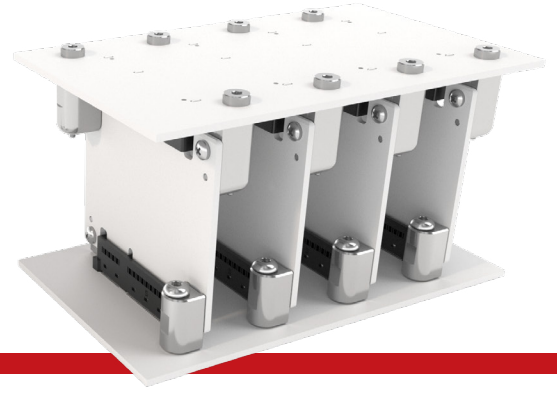


RUGGED EDGE CARD HARDWARE



SURE-EC SERIES

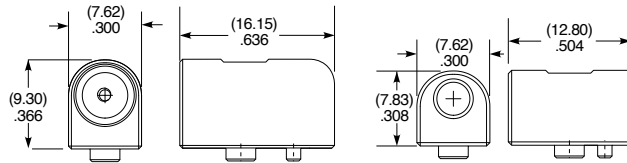
SURE-EC

Use With:
(1.60 mm) .062" -
(3.18 mm) .125" thick PCB
(card not included)

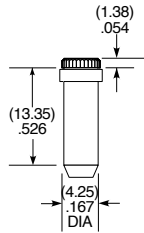
SPECIFICATIONS

Material:
Screw & Guidepost:
Stainless Steel
Guidepost Receptacle & Base:
Zinc Alloy

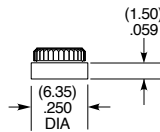
SURE-EC



-02 SHOWN



-04 SHOWN



-05 SHOWN

OPTIONS

- 01**
= All Hardware (-02, -04, -05)
(Edge Card Not Included)
- 02**
= Edge Card Hardware
(Edge Card Not Included)
- 03**
= Top/Bottom PCB Hardware
(-04 & -05 Hardware)
- 04**
= Top PCB Hardware
- 05**
= Bottom PCB Hardware

H6RU SERIES

H6RU

Use With:
HSEC6, SURE-EC-03

SPECIFICATIONS

Material:
Screw: Stainless Steel
Hardware: Zinc Alloy

H6RU - NO. OF POSITIONS - DV - STACK HEIGHT - DP - 085

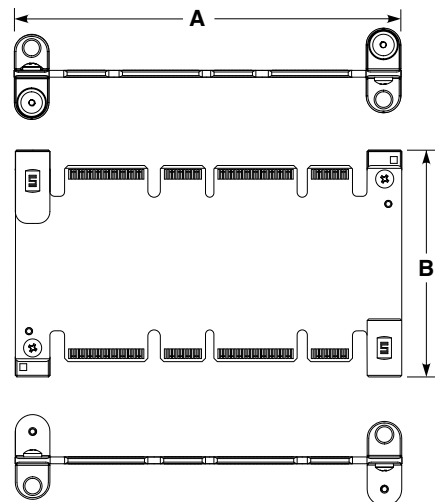
(Per row)

- 028
- 084

- 025
- 060

NO OF POSITIONS	A
-028	(42.28) 1.665
-084	(85.28) 3.357

STACK HEIGHT	B
-025	(25.00) .984
-060	(60.00) 2.362



Notes:
Some sizes, styles and options are non-standard, non-returnable.