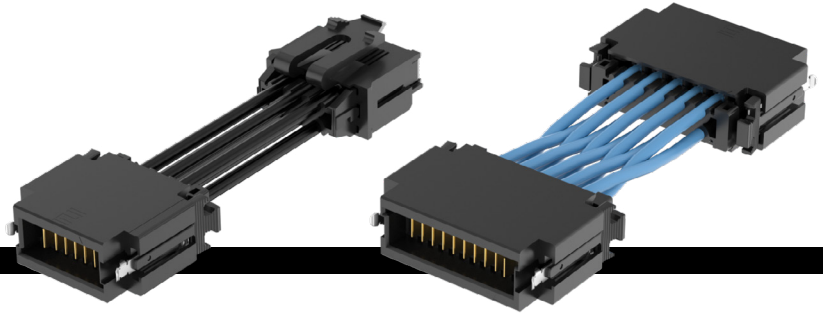


ULTRA MICRO CABLE-TO-CABLE



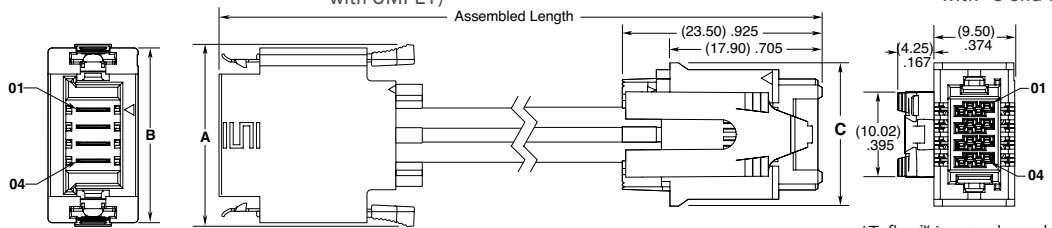
SERIES	NO. OF POSITIONS	PLATING OPTION	WIRE GAUGE	LENGTH	END 2 OPTION	PINOUT
UMPE = Ultra Micro PVC Cable UMPET = Ultra Micro Blue *Teflon™ Fluoropolymer Cable	-02, -03, -04, -05, -06, -07, -08, -09, -10	-L = 10 μ" (0.25 μm) Gold on contact, Tin on tail -T = Tin	-16 = 16 AWG -16C = 16 AWG Color Coded Cable (not available with UMPET) -18 = 18 AWG -18C = 18 AWG Color Coded Cable (not available with UMPET)	-"XX.X" = Assembled Length in Inches Single ended = (76.2 mm) 03.0" min. Double ended = (101.6 mm) 04.0" min. (2-4 positions) Double ended = (127.0 mm) 05.0" min. (5-10 positions)	(Leave blank for Single ended) -T = Terminal -S = Socket	(Leave blank for Single ended) -M1 = Metal Latch Pin 01 to Pin 01 -M2 = Metal Latch Pin 01 to Pin N -P1 = Plastic Latch Pin 01 to Pin 01 -P2 = Plastic Latch Pin 01 to Pin N (PX only available with -S end option)

UMPE(T)
Cable Mates:
 UMPI(T)
End 2 Mates:
 UMPI(T), UMPT

UMPET
 PRELIMINARY

SPECIFICATIONS

Insulator Material:
 Black LCP
Contact Material:
 Copper Alloy
Plating:
 Sn or Au over 50 μ" (1.27 μm) Ni
Wire:
 16 or 18 AWG
Current Rating:
 16 AWG Tin = 18.5 A per pin
 18 AWG Tin = 17.5 A per pin
 16 AWG Gold = 22.5 A per pin
Voltage Rating:
 445 VAC/629 VDC



NO. OF POSITIONS	A	B	C
-02	(17.38) .684	(16.55) .652	(12.85) .506
-03	(19.38) .763	(18.55) .730	(14.85) .585
-04	(21.38) .842	(20.55) .809	(16.85) .663
-05	(23.38) .920	(22.55) .888	(18.85) .742
-06	(25.38) .999	(24.55) .967	(20.85) .821
-07	(27.38) 1.078	(26.55) 1.045	(22.85) .900
-08	(29.38) 1.157	(28.55) 1.124	(24.85) .978
-09	(31.38) 1.235	(30.55) 1.203	(26.85) 1.057
-10	(33.38) 1.314	(32.55) 1.281	(28.85) 1.136

CABLE COLOR CODING	
PIN	COLOR
1	BROWN
2	RED
3	ORANGE
4	YELLOW
5	GREEN
6	BLUE
7	VIOLET
8	GRAY
9	WHITE
10	BLACK

*Teflon™ is a trademark of The Chemours Company FC, LLC used under license by Samtec.

Notes:
 Teflon™ Fluoropolymer cable is intended for crimp only. Contact Samtec for solderable cable applications.


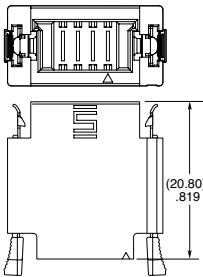
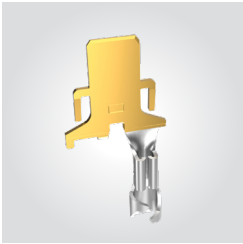
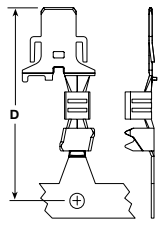
For wiring option information refer to drawings on web.

Some lengths, styles and options are non-standard, non-returnable

UMPE CABLE HOLDER (Required for use with UMPE)

SERIES	NUMBER OF POSITIONS	LEAD STYLE
IMPEC	-02, -03, -04, -05, -06, -07, -08, -09, -10	01 = 16 AWG 02 = 18 AWG

View complete specifications at: samtec.com?UMPE & samtec.com?UMPET

IMPE	NO. OF POSITIONS	LATCH OPTION	TC146	01	PLATING	HOT SWAP	PACKAGING						
	-02, -03, -04, -05, -06, -07, -08, -09, -10	-M = Metal Side Latches			-L = 10 μ" (0.25 μm) Gold on contact, Tin on tail -T = Tin	-1 = 6.60 -2 = 7.10	-R = Full Reel (5,000 Contacts) -M = Mini Reel (1,000 Contacts) -B = Bubble Bag (35 Contacts)						
							<table border="1"> <thead> <tr> <th>HOT SWAP</th> <th>D</th> </tr> </thead> <tbody> <tr><td>-1</td><td>(21.31) .839</td></tr> <tr><td>-2</td><td>(21.81) .859</td></tr> </tbody> </table>	HOT SWAP	D	-1	(21.31) .839	-2	(21.81) .859
HOT SWAP	D												
-1	(21.31) .839												
-2	(21.81) .859												

Note:
 Some lengths, styles and options are non-standard, non-returnable.

TOOLING

Hand Tool: CAT-HT-1146-1618-13	Mini Applicator: CAT-MC-489-1618-XX-01
--------------------------------	--

View complete specifications at: samtec.com?IMPE & samtec.com?TC146