



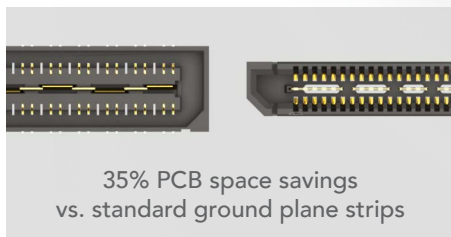
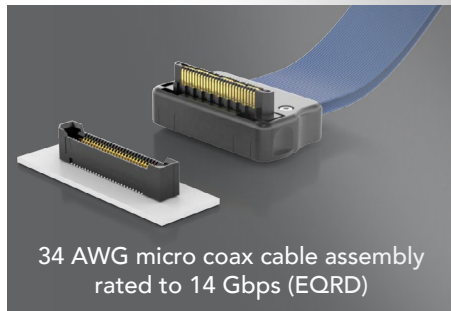
SLIM GROUND PLANE

Q RATE® HIGH-SPEED INTERCONNECTS

- Slim 4.60 mm body width saves board space
- Edge Rate® contacts optimized for superior signal integrity
- Integral power/ground plane rated for up to 8.5 A
- 0.80 mm pitch with 1.20 mm contact wipe
- Up to 156 total positions
- 7 – 14 mm stack heights
- Single-ended and differential pairs
- Optional guide posts for proper alignment
- Compatible with mPOWER® for flexible two-piece power/signal solutions

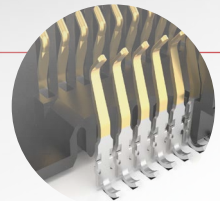


28
G b p s



Edge Rate® Contact System

- Smooth milled mating surface reduces wear and increases durability
- Lower insertion and withdrawal forces
- Robust when “zippered” during unmating
- Minimized parallel surface area reduces broadside coupling and crosstalk
- Designed, simulated and optimized for 50 Ω and 100 Ω systems



System

- **QRM8** – 0.80 mm Pitch, Slim Body Ground Plane Header
- **QRM8-RA** – 0.80 mm Pitch, Right-Angle Ground Plane Header
- **QRF8** – 0.80 mm Pitch, Slim Body Ground Plane Socket
- **QRF8-RA** – 0.80 mm Pitch, Right-Angle Ground Plane Socket
- **EQRD** - 0.80 mm Pitch, Micro Coax Cable Assembly

For more information about Samtec's Q Rate® solutions, please visit samtec.com/qrate