



DRONE/UAV

Optimized for reduced size, weight, and power (SWaP), Samtec Sudden Service® products enable internal, power, RF, and cable connections in the latest drone and UAV designs. Samtec's on-going **Extended Life Product™**, **Severe Environment Testing**, and **Upscreen Testing** initiatives help ensure reliability for critical applications. For more information visit samtec.com/drone-uav or email Mil-AeroGroup@samtec.com.

Product Features & Benefits

- High frequency interfaces
- High power interfaces
- Extended signal reach
- Small form factors / ultra-high densities
- Ruggedizing features

Design & Development Support

- Free online tools & resources: 3D Models, Prints, Picture Search & Solutionator® product builders
- Industry-leading component and system-level engineering expertise
- Samtec cable assemblies also undergo cable flex and/or dynamic testing to prove consistent electrical stability in demanding applications



SEVERE ENVIRONMENT & UPSCREEN TESTING

Products are tested beyond typical standards to ensure reliability in harsh environments.

Upscreen testing provides assurance of board-to-board interconnects for mission critical applications (MIL-DTL-55302 & EIA-364). Contact MAP@samtec.com

Visit samtec.com/set or contact SET@samtec.com.

EXTENDED LIFE PRODUCT™

E.L.P.™ products are tested to rigorous standards that evaluate contact resistance in simulated storage and field conditions, including:

- 10-Year Mixed Flowing Gas (MFG)
- High Mating Cycles (250 to 2,500)
- Certain plating and/or contact options will apply

Visit samtec.com/elp or contact ASG@samtec.com.

RF DESIGN, DEVELOPMENT & TECHNICAL SUPPORT

Samtec offers high-quality RF products from design and fabrication to technical support.

- Launch optimization & design services
- Simulation
- Prototyping
- Physical test & measurement verification

Visit samtec.com/rf or contact RFGroup@samtec.com.

ONLINE TOOLS

Solutionator®: Quickly build mated connector sets or design full cable assemblies

Solutionator DESIGN IN A MINUTE™ **RF CABLE**

samtec.com/rf-cablebuilder

Solutionator DESIGN IN A MINUTE™ **DISCRETE WIRE**

samtec.com/discrete-cablebuilder

Solutionator GET A MATED SET IN SECONDS™ **HS BOARD-TO-BOARD**

samtec.com/hsb2b-solutionator

Picture Search: Browse through Samtec's most popular products to find the ideal solution

samtec.com/picturesearch

Downloadable Resources: Immediate and unlimited access to select the right solution: 3D models, prints and footprints, test reports, white papers and more

samtec.com

INTERCONNECT SOLUTIONS

Ganged, Multi-Port RF Solutions

Ganged, multi-port SMPM blocks and cable assemblies in a miniature, high-density design with mode free operation up to 65 GHz for mmWave applications.



samtec.com/magnumrf

Nitrowave™ RF Cable

Phase and amplitude stable RF cable, in **Samtec orange**, with a Dynamic Performance Layer for accurate and dependable performance.



samtec.com/nitrowave

SMP/SMPM Solutions

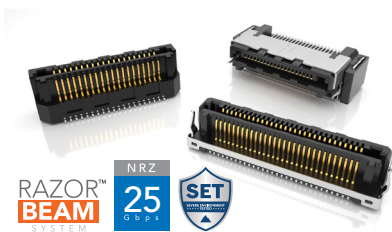
Miniature push-on connectors that are 30% smaller than SMP with high frequency to 65 GHz, and bullet adaptors available for blind mate.



samtec.com/smpm

Ultra Micro Interconnects

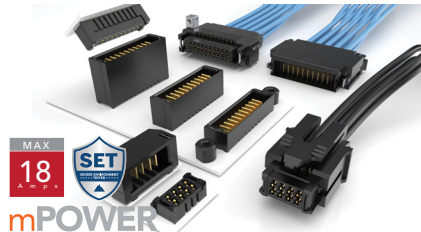
Ultra-fine pitch, low profile and ultra-slim hermaphroditic interfaces with high-retention Razor Beam™ contacts and EMI shielding option.



samtec.com/razorbeam

Ultra Micro Power

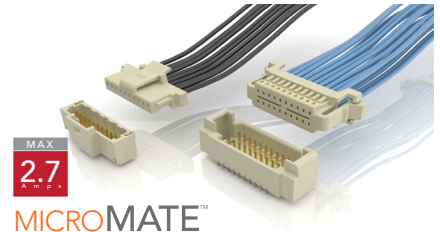
mPOWER® offers 40% space savings vs. traditional power interconnects in board-to-board, cable-to-board and cable-to-cable applications.



samtec.com/mpower

Rugged Micro Cable System

Cable-to-cable, panel-to-board and cable-to-board solution in a small form factor with rugged latching and up to 2.7 Amps/pin (250 VAC).



samtec.com/micromate

AcceleRate® Slim Cable Assembly

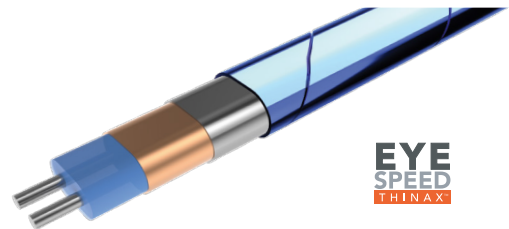
Industry's slimmest cable assembly (7.6 mm) features a high-density, 2-row design with direct attach technology and ultra low skew twinax cable for 64 Gbps PAM4 performance.



samtec.com/accelerate-cable

Eye Speed® Cable Technology

Hyper and ultra low skew cable supports extreme density and performance to 224 Gbps PAM4 in Flyover® cable systems that provide signal integrity and thermal improvements.



samtec.com/eyespeed

Visit samtec.com to view our full line of interconnect solutions.

© DECEMBER 2025, SAMTEC INC.