



MEMORY/STORAGE

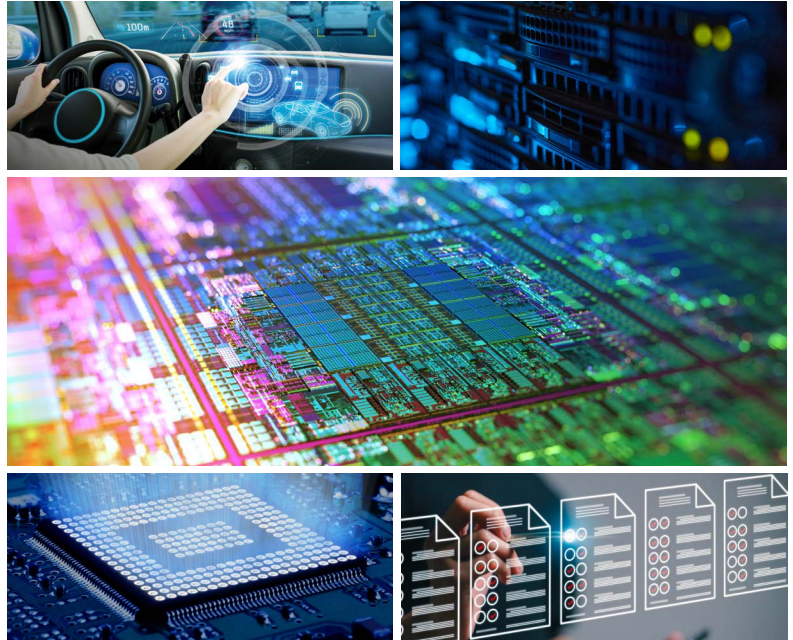
Emulating, prototyping, and testing the latest memory chips and chiplets is challenging. Samtec has developed high performance interconnects for use on DDR/LPDDR IC characterization cards and to help memory developers improve the performance of their chips. Inside the data center, Samtec's solutions enable low latency links and memory coherency between computing devices. For more information, visit samtec.com/switches-networks or contact ASG@samtec.com.

Product Features & Benefits

- Signal integrity-optimized solutions
- Extended signal reach
- High-density solutions
- High bandwidth / low latency systems
- High frequency interfaces

Design & Development Support

- Free online tools & resources: 3D models, prints, Picture Search & Solutionator® product builders
- Industry leading component and system-level engineering expertise
- RF technical support for launch optimization, simulation and test & measurement



OPTICAL SOLUTIONS SUPPORT

Samtec is the industry leading provider of mid-board optical transceiver solutions with expertise to help you achieve reliable signal integrity over extended distances.

- Design tools
- Optimization & support
- Simulation & analysis

Visit samtec.com/sog or contact Optics@samtec.com.

SIGNAL INTEGRITY SUPPORT

Samtec is the industry leader in Signal Integrity. Our mission is to help you attain full system optimization - from Silicon-to-Silicon™.

- Full channel analysis
- System optimization recommendations
- PDN simulations
- Advanced product design support

Visit samtec.com/sig or contact SIG@samtec.com.

EVALUATION & DEVELOPMENT KITS

Samtec-designed kits simplify the interconnect design process and reduce time to market.

Kits are tested and verified by Samtec's signal integrity experts before customer delivery.

Visit samtec.com/kits or contact KitsAndBoards@samtec.com.

ONLINE TOOLS

Solutionator®: Quickly build mated connector sets or design full cable assemblies



samtec.com/optics-solutionator



samtec.com/hsb2b-solutionator



samtec.com/rf-cablebuilder

Picture Search: Browse through Samtec's most popular products to find the ideal solution

samtec.com/picturesearch

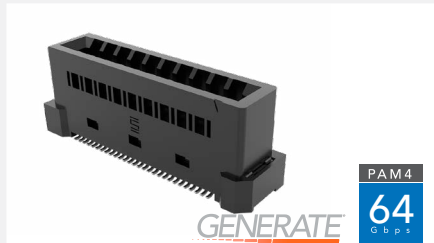
Downloadable Resources: Immediate and unlimited access to select the right solution - 3D models, prints and footprints, test reports, white papers and more

samtec.com

INTERCONNECT SOLUTIONS

0.60 mm Pitch Edge Cards

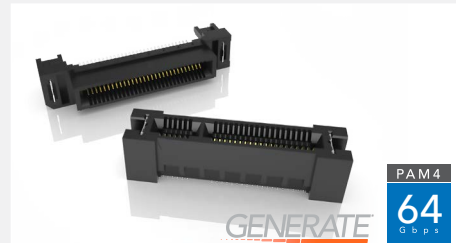
Features differential pair Edge Rate® contacts, PCIe® 6.0/CXL® 3.2 capable and compliant to SFF-TA-1002.



samtec.com/generate-060

0.80 mm Pitch Edge Cards

Available in vertical, right-angle, pass-through, power/signal, differential pair and rugged tucked beam technology.



samtec.com/generate-080

1.00 mm Pitch Edge Cards

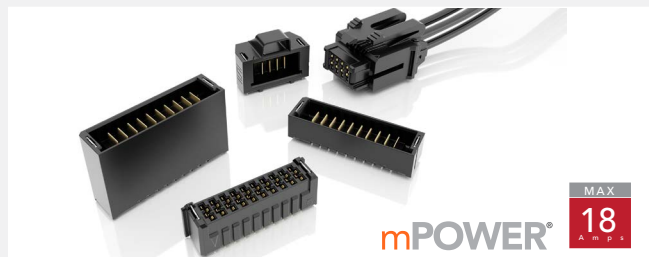
Provides misalignment mitigation with Edge Rate® contacts for decreased crosstalk and increased cycle life.



samtec.com/generate-100

Ultra Micro Power Systems

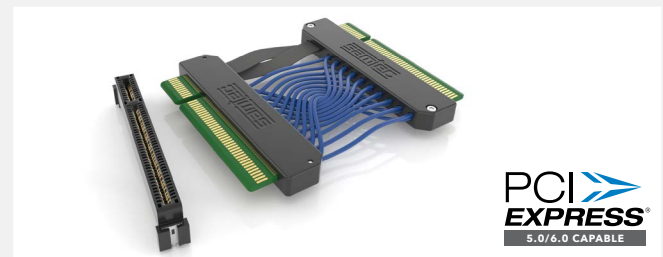
mPOWER® offers 40% space savings compared to traditional power interconnects with up to 10 power blades on a 2.00 mm pitch; board-to-board, cable-to-board and cable-to-cable.



samtec.com/mpower

PCI Express® Edge Card Solutions

1.00 mm pitch edge card sockets and mating cable assembly, with power cable option, support PCIe® 5.0/6.0 data rates and are CXL® 3.2 capable.



samtec.com/pcie-edge-cards

High-Performance Test

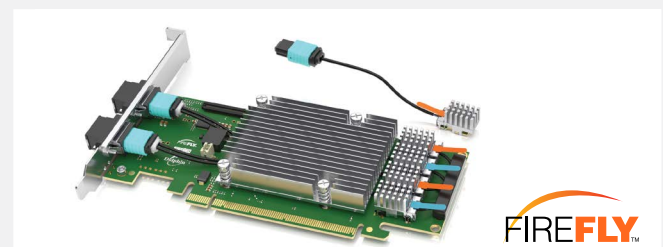
Bulls Eye® test and measurement assemblies to 90 GHz with a high-density, space saving design that enables smaller evaluation boards and shorter trace lengths.



samtec.com/bullseye

PCIe® & CXL®-Over-Fiber

FireFly™ mid-board optical transceivers transmit 3.0/4.0 data rates up to 100 meters with low latency, power savings and guaranteed transmission.



samtec.com/firefly

PCI-SIG®, PCI Express® and the PCIe® design marks are registered trademarks and/or service marks of PCI-SIG.

Visit samtec.com to view our full line of interconnect solutions.

© JUNE 2025, SAMTEC INC.