



MIL/AERO COMMUNICATIONS

Military and aerospace communications demand reliable, high-performance, secure platforms. Samtec RF solutions enable integration of multi-band RF signal paths into rugged, small form factors, supporting tactical networks from manpack radios to ground control stations. Samtec's ruggedized high-speed cable and high-density arrays, including those pre-qualified to **VITA™ standards**, support a wide range of military and aerospace communications equipment. For more information visit samtec.com/communications or email Mil-AeroGroup@samtec.com.

Product Features & Benefits

- High vibration/high mating cycle systems
- High bandwidth/low latency systems
- Small form factors/ultra-high densities
- Signal integrity-optimized solutions
- Extended signal reach
- Industry standard solutions

Design & Development Support

- Industry-leading component and system-level engineering expertise
- Extensive testing initiatives that surpass typical industry standards and specifications
- Samtec cable assemblies also undergo cable flex and/or dynamic testing to prove consistent electrical stability in demanding applications



RF DESIGN, DEVELOPMENT & TECHNICAL SUPPORT

Samtec offers high-quality RF products from design and fabrication to technical support.

- Launch optimization & design services
- Simulation
- Prototyping
- Physical test & measurement verification

Visit samtec.com/rf or contact RFGroup@samtec.com.

INDUSTRY STANDARDS SUPPORT

Samtec offers solutions for expanding signal transmission possibilities at data rates up to 224 Gbps PAM4, including:

- VITA™
- CXL®
- PCI Express®

Visit samtec.com/standards or contact Standards@samtec.com.

SEVERE ENVIRONMENT & UPSCREEN TESTING

Products are tested beyond typical standards to ensure reliability in harsh environments.

Upscreen testing provides assurance of board-to-board interconnects for mission critical applications (MIL-DTL-55302 & EIA-364). Contact MAP@samtec.com

Visit samtec.com/set or contact SET@samtec.com.

ONLINE TOOLS

Solutionator®: Quickly build mated connector sets or design full cable assemblies



samtec.com/rf-cablebuilder



samtec.com/cablebuilder



samtec.com/hsb2b-solutionator

Picture Search: Browse through Samtec's most popular products to find the ideal solution

samtec.com/picturesearch

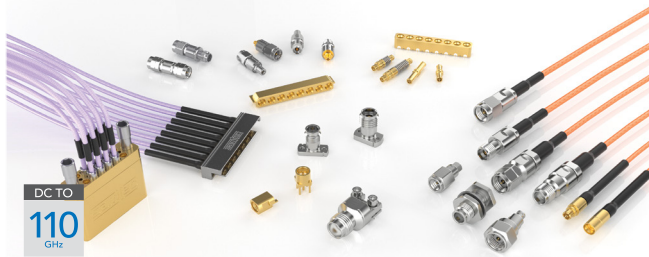
Downloadable Resources: Immediate and unlimited access to select the right solution: 3D models, prints and footprints, test reports, white papers and more

samtec.com

INTERCONNECT SOLUTIONS

Precision RF

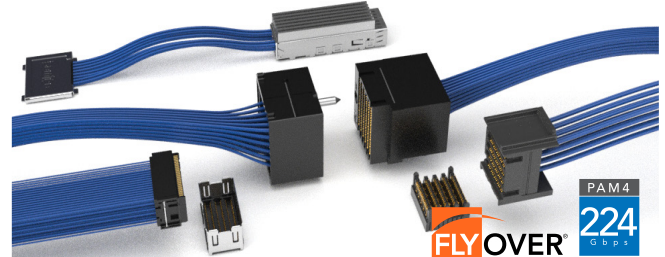
Cable assemblies, cable connectors, board connectors and adaptors for 18 to 110 GHz high frequency, microwave and mmWave applications with full system support.



samtec.com/precisionrf

Flyover® Cable Systems

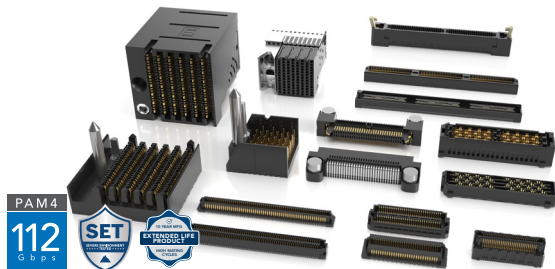
Extended signal reach and density to achieve next gen speeds by routing signals via ultra low skew twinax cable vs. lossy PCB for panel, mid-board and backplane applications.



samtec.com/flyover

High-Speed Board-to-Board

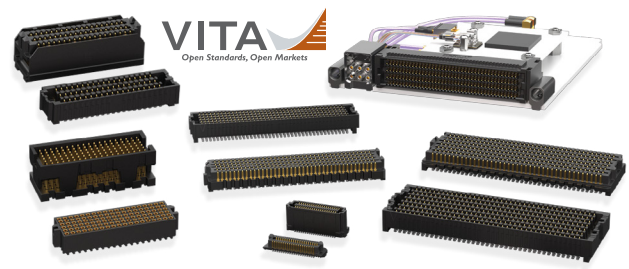
High-performance mezzanine and backplane systems with contact durability, optimized signal integrity, integral ground planes, high-density pin counts and ultra-fine pitches.



samtec.com/hsb2b

VITA™ Standards Solutions

High-speed and high-density solutions in small form factor designs for embedded applications including safety, defense, communications and transportation.



samtec.com/vita

FireFly™ EXT Rugged Optical

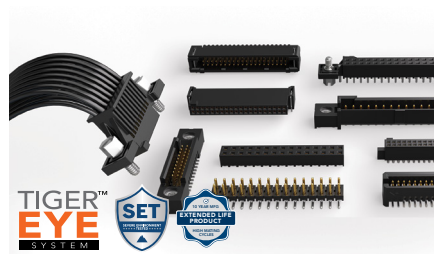
Micro footprint optical mid-board system with extended temperature range from -40 °C to +85 °C for mil/aero and industrial applications.



samtec.com/firefly

High-Reliability Tiger Eye™

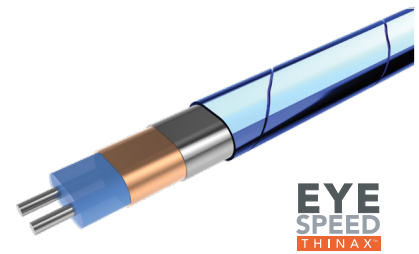
Rated to 1,000+ cycles with a choice of pitch, termination, rugged features, and mating discrete wire or IDC cable systems.



samtec.com/tigereye

Eye Speed® Cable Technology

Hyper and ultra low skew cable supports extreme density and performance to 224 Gbps PAM4 in Flyover® cable systems.



samtec.com/eyespeed

Visit samtec.com to view our full line of interconnect solutions.

© DECEMBER 2025, SAMTEC INC.